

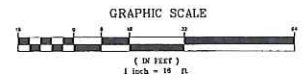
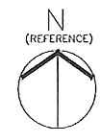
**LANDSCAPE AREA CALCULATIONS**  
 OVERALL SITE AREA = 43,919 SQ. FT.  
 PROPOSED LANDSCAPE AREA = 14,619 SQ. FT. / 33.5% OF OVERALL SITE  
 FILBERT STREET FRONTAGE LANDSCAPE AREA = 4,438 SQ. FT. / 30% OF LANDSCAPE AREA

NOT FOR CONSTRUCTION

# LANDSCAPE PLAN

LANDSCAPE PLANS COMPLY WITH THE CRITERIA OF THE WATER EFFICIENT LANDSCAPE ORDINANCE AND HAVE APPLIED SUCH CRITERIA FOR THE EFFICIENT USE OF WATER IN THE LANDSCAPE DESIGN. WATER CALCULATIONS SHALL BE SUPPLIED WITH THE CONSTRUCTION DOCUMENTS.

SIGNED \_\_\_\_\_ DATE \_\_\_\_\_



NOT TO SCALE UNLESS NOTED OTHERWISE  
 ALL DIMENSIONS SHOWN ARE APPROXIMATE  
 ALL DIMENSIONS SHOWN ARE APPROXIMATE  
 ALL DIMENSIONS SHOWN ARE APPROXIMATE

**BOBBECCHI & ASSOCIATES, INC.**  
 LANDSCAPE ARCHITECTS  
 1000 S. 10th Street  
 San Jose, CA 95128  
 TEL: 408.297.5300  
 FAX: 408.297.5300



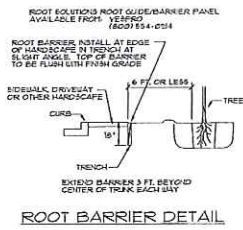
DATE	
REVISION	
NO.	
DATE	

**FILBERT STREET VILLAS**  
 NEWARK, CA

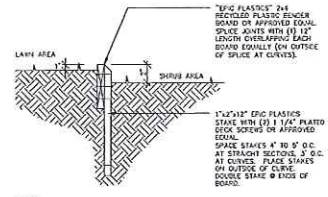
DATE OF PROJECT: \_\_\_\_\_  
 SCALE: 3/8" = 1'-0"  
 SHEET NO.: \_\_\_\_\_ OF \_\_\_\_\_

PROJECT NAME: \_\_\_\_\_  
 TITLE OF DRAWING: \_\_\_\_\_  
 LANDSCAPE

**EXHIBIT A-206**



ROOT BARRIER DETAIL



- NOTES:
1. CURBS SHALL NOT BE TIGHTER THAN 24\"/>

2X4 PLASTIC HEADERBOARD DETAIL

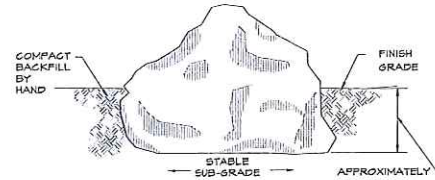


METALLIC TITANIUM FINISH  
INSTALL PER MANUFACTURERS RECOMMENDATIONS  
AVAILABLE FROM LANDSCAPEWORKS.COM  
**35 LOOP BIKE RACK**

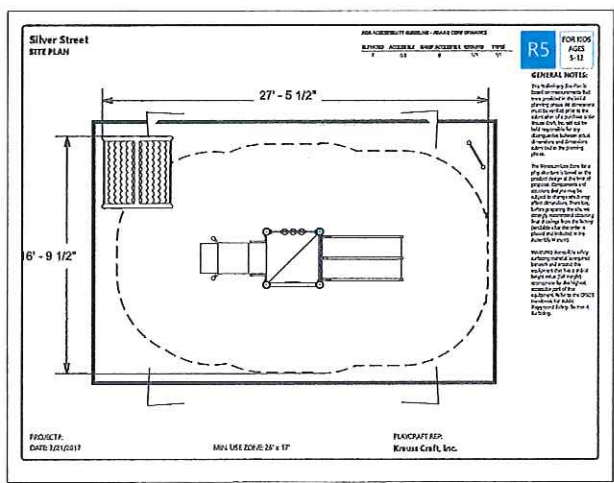
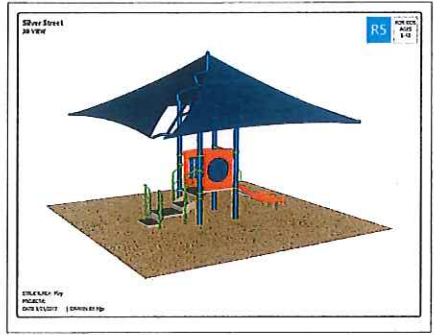


SUNBURST COBBLE

- 2\"/>



- NOTES:
1. ALL BOULDERS SHALL BE AS SPECIFIED ON THE PLAN AND ARE SUBJECT TO THE APPROVAL OF THE LANDSCAPE ARCHITECT.
  2. 'X' = ROCK TO BE SET AT A DEPTH OF APPROXIMATELY 1/3 ITS OVERALL HEIGHT.
  3. CONTRACTOR SHALL PROVIDE CHALKED LAYOUT OF BOULDERS FOR APPROVAL PRIOR TO INSTALLATION.
  4. WINDSOR BOULDERS OR EQUAL  
APX. SIZE 20\"/>
- BOULDER INSTALLATION  
NO SCALE



NOT FOR CONSTRUCTION

BORRERO/KILIAN & ASSOCIATES, INC.  
 LANDSCAPE ARCHITECTS  
 84053  
 SAN FRANCISCO, CALIFORNIA 94133  
 FAX: 415.774.3388

SILVER STREET VILLAS  
 NEWARK, CA

PROJECT NO. 2017-001  
 SHEET NO. 4  
 DATE 12/12/17

L = 4  
 SHEET NO. 4  
 DATE 12/12/17

PROJECT: SILVER STREET VILLAS  
 DATE: 12/12/17

PLAN SCALE: 1/8\"/>

GENERAL NOTES:  
 1. THE DRAWING SHALL BE USED IN CONJUNCTION WITH THE CONTRACT DOCUMENTS AND ANY ADDENDUMS.  
 2. THE CONTRACTOR SHALL BE RESPONSIBLE FOR OBTAINING ALL NECESSARY PERMITS AND APPROVALS FROM THE CITY OF NEWARK AND THE STATE OF CALIFORNIA.  
 3. THE CONTRACTOR SHALL BE RESPONSIBLE FOR OBTAINING ALL NECESSARY PERMITS AND APPROVALS FROM THE CITY OF NEWARK AND THE STATE OF CALIFORNIA.  
 4. THE CONTRACTOR SHALL BE RESPONSIBLE FOR OBTAINING ALL NECESSARY PERMITS AND APPROVALS FROM THE CITY OF NEWARK AND THE STATE OF CALIFORNIA.  
 5. THE CONTRACTOR SHALL BE RESPONSIBLE FOR OBTAINING ALL NECESSARY PERMITS AND APPROVALS FROM THE CITY OF NEWARK AND THE STATE OF CALIFORNIA.  
 6. THE CONTRACTOR SHALL BE RESPONSIBLE FOR OBTAINING ALL NECESSARY PERMITS AND APPROVALS FROM THE CITY OF NEWARK AND THE STATE OF CALIFORNIA.  
 7. THE CONTRACTOR SHALL BE RESPONSIBLE FOR OBTAINING ALL NECESSARY PERMITS AND APPROVALS FROM THE CITY OF NEWARK AND THE STATE OF CALIFORNIA.  
 8. THE CONTRACTOR SHALL BE RESPONSIBLE FOR OBTAINING ALL NECESSARY PERMITS AND APPROVALS FROM THE CITY OF NEWARK AND THE STATE OF CALIFORNIA.  
 9. THE CONTRACTOR SHALL BE RESPONSIBLE FOR OBTAINING ALL NECESSARY PERMITS AND APPROVALS FROM THE CITY OF NEWARK AND THE STATE OF CALIFORNIA.  
 10. THE CONTRACTOR SHALL BE RESPONSIBLE FOR OBTAINING ALL NECESSARY PERMITS AND APPROVALS FROM THE CITY OF NEWARK AND THE STATE OF CALIFORNIA.

**EXHIBIT** Apr 27



ALL IDEAS, DESIGN, ARRANGEMENTS AND PLANS INDICATED OR REPRESENTED BY THIS DRAWING ARE OWNED BY, AND THE PROPERTY OF, BKBC ARCHITECTS INC., AND WERE CREATED, DEVELOPED AND OFFERED FOR USE ON, AND IN CONNECTION WITH THIS PROJECT. NONE OF SUCH IDEAS, DESIGN, ARRANGEMENTS, OR PLANS SHALL BE USED BY, OR DISCLOSED TO ANY PERSON, FIRM, OR CORPORATION FOR ANY PURPOSE WHATSOEVER WITHOUT THE WRITTEN PERMISSION OF BKBC ARCHITECTS INC. FILING THESE DRAWINGS OR SPECIFICATIONS WITH ANY PUBLIC AGENCY IS NOT A PUBLICATION OF SAME. NO COPYING, REPRODUCTION OR USE THEREOF IS PERMISSIBLE WITHOUT THE CONSENT OF BKBC ARCHITECTS INC.



## Filbert Street View

**EXHIBIT** A p29

DRAWING TITLE

Colored Elevations

DATE:

05/24/2017

SCALE:

NTS

DRAWING NO.:

Ne-19a

ARCHITECTS

**BKBC ARCHITECTS INC.**

1371 OAKLAND BLVD, SUITE 101  
WALNUT CREEK, CA 94596

925.930.9700 www.bkbcarch.com

PROJECT

**FILBERT VILLAS**

37743 & 37257 FILBERT ST, NEWARK, CA 94560

DEVELOPER/OWNER

**SRAJ Development Inc.**

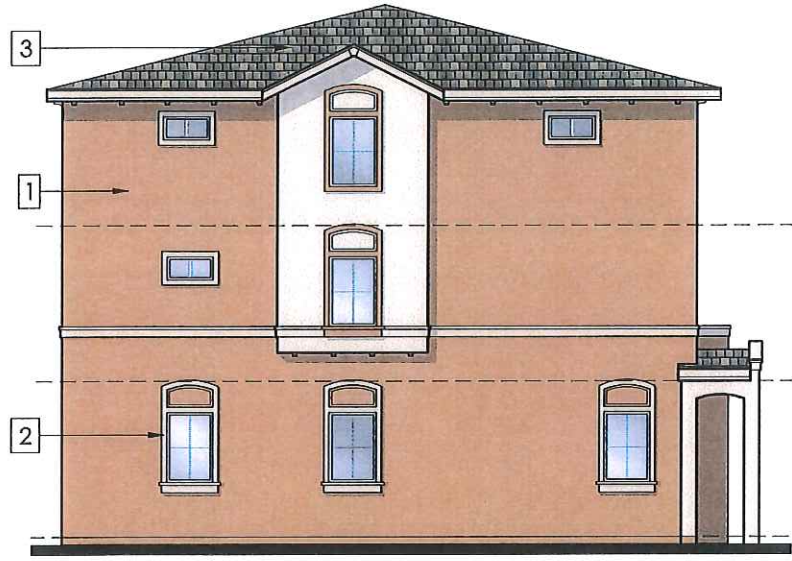
ALL IDEAS, DESIGN, ARRANGEMENTS AND PLANS INDICATED OR REPRESENTED BY THIS DRAWING ARE OWNED BY, AND THE PROPERTY OF BKBC ARCHITECTS INC., AND WERE CREATED, DEVELOPED FOR USE ON, AND IN CONNECTION WITH THIS PROJECT. NONE OF SUCH IDEAS, DESIGN, ARRANGEMENTS, OR PLANS SHALL BE USED BY, OR DISCLOSED TO ANY PERSON, FIRM, OR CORPORATION FOR ANY PURPOSE WHATSOEVER WITHOUT THE WRITTEN PERMISSION OF BKBC ARCHITECTS INC. FILING THESE DRAWINGS OR SPECIFICATIONS WITH ANY PUBLIC AGENCY IS NOT A PUBLICATION OF SAME. NO COPYING, REPRODUCTION OR USE THEREOF IS PERMISSIBLE WITHOUT THE CONSENT OF BKBC ARCHITECTS INC.



Front Elevation



Back Elevation



Side Elevation



1

**Stucco / Trim Color 2**  
SW - 0039 "Portrait Tone"  
SBMF-48 FINISH



2

**Stucco / Trim Color 1**  
SW - 0035 "Indian White"  
SBMF-48 FINISH



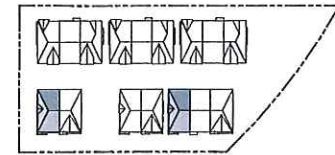
3

**Roof Tiles**  
Cement Tile, Blended Colors  
Eagle Roofing, Bel Air, or equivalent



4

**Door Color**  
SW - 6418 "Rural Green"



**Unit A-1**  
Color Scheme - 1  
Mediterranean Style

**EXHIBIT** Ap30

ARCHITECTS  
PROJECT

**FILBERT VILLAS**  
37248 & 37257 FILBERT ST., NEWARK, CA 94560

DEVELOPER / OWNER  
**SRAJ Development Inc.**

**BKBC ARCHITECTS INC.**  
1371 OAKLAND BLVD, SUITE 101  
WALNUT CREEK, CA 94596  
925.930.9700 www.bkbcarch.com

DRAWING TITLE

Color and Material Board

DATE:

05/24/2017

SCALE:

1/8" = 1'-0"

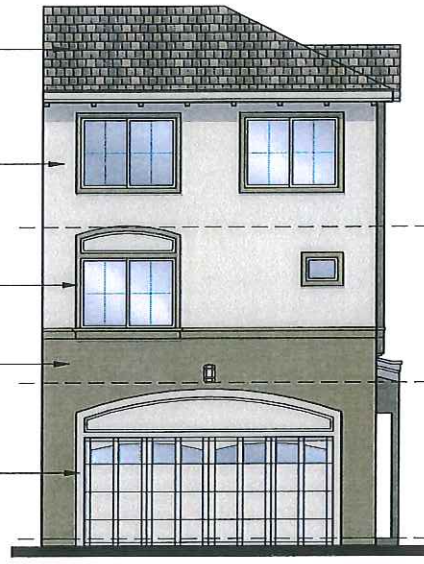
DRAWING NO.:

**Ne-19b**

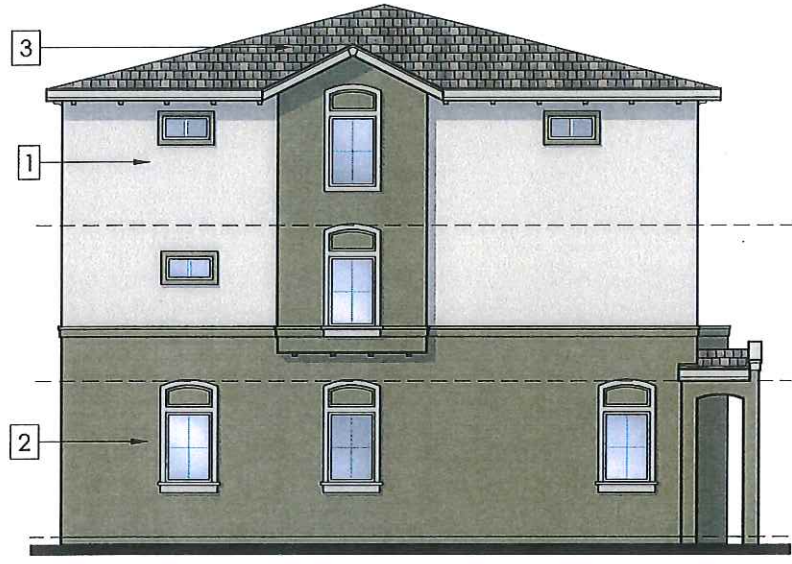
ALL IDEAS, DESIGN, ARRANGEMENTS AND PLANS INDICATED OR REPRESENTED BY THE DRAWING ARE OWNED BY, AND THE PROPERTY OF, BKBC ARCHITECTS INC., AND WERE CREATED, EVOLVED AND DEVELOPED FOR USE BY, AND IN CONNECTION WITH THIS PROJECT. NONE OF SUCH IDEAS, DESIGN, ARRANGEMENTS, OR PLANS SHALL BE USED BY, OR DISCLOSED TO ANY PERSON, FIRM, OR CORPORATION FOR ANY PURPOSE WHATSOEVER WITHOUT THE WRITTEN PERMISSION OF BKBC ARCHITECTS INC. FILING THESE DRAWINGS OR SPECIFICATIONS WITH ANY PUBLIC AGENCY IS NOT A PUBLICATION OF SAME. NO COPYING, REPRODUCTION OR USE THEREOF IS PERMISSIBLE WITHOUT THE CONSENT OF BKBC ARCHITECTS INC.



Front Elevation



Back Elevation



Side Elevation



**1**  
**Stucco / Trim Color 1**  
 SW - 7738 "Cargo Pants"  
 SBMF-48 FINISH



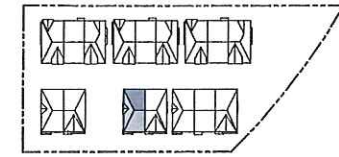
**2**  
**Stucco / Trim Color 2**  
 SW - 7734 "Olive Grove"  
 SBMF-48 FINISH



**3**  
**Roof Tiles**  
 Cement Tile, Blended Colors  
 Eagle Roofing, Bel Air, or equivalent



**4**  
**Door Color**  
 SW - 6383 "Golden Rule"



**Unit A-1**

Color Scheme - 2  
 Mediterranean Style

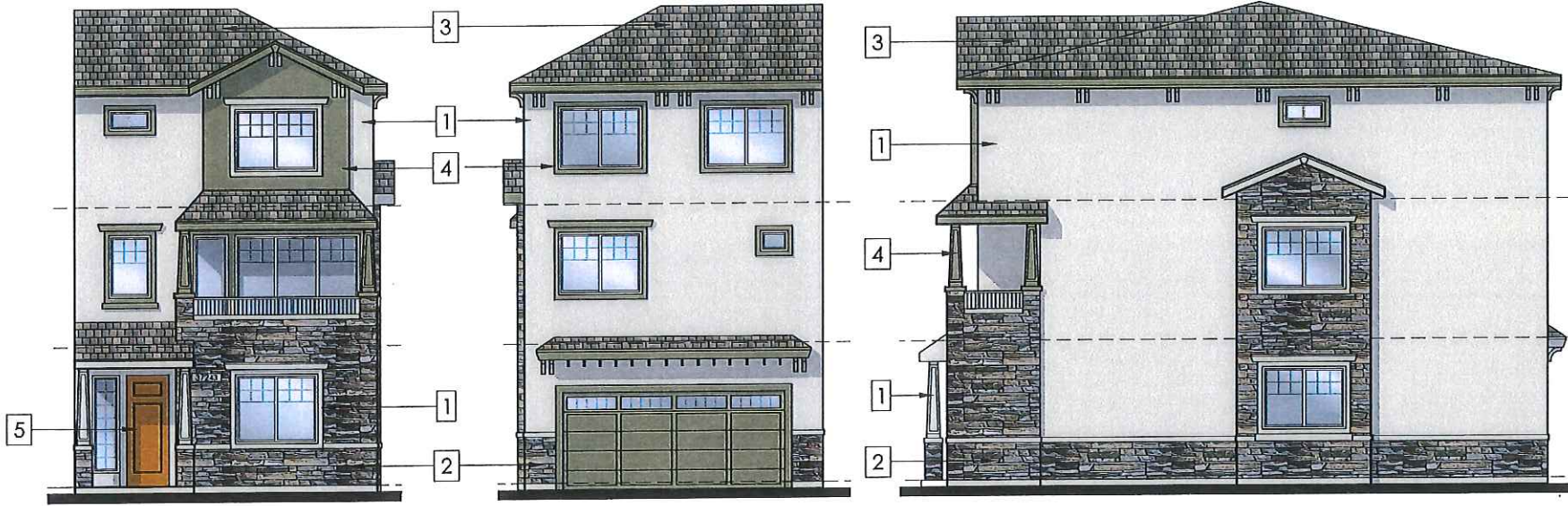
**EXHIBIT** Ap31

ARCHITECTS  
**BKBC ARCHITECTS INC.**  
 1371 OAKLAND BLVD, SUITE 101  
 WALNUT CREEK, CA 94596  
 925.930.9700 www.bkbcarch.com

PROJECT  
**FILBERT VILLAS**  
 37243 & 37257 FILBERT ST., NEWARK, CA 94560  
 DEVELOPER / OWNER  
**SRAJ Development Inc.**

DRAWING TITLE  
**Color and Material Board**  
 DATE: 05/24/2017  
 SCALE: 1/8" = 1'-0"  
 DRAWING NO.:  
**Ne-19c**

ALL IDEAS, DESIGN, ARRANGEMENTS AND PLANS INDICATED OR REPRESENTED BY THE DRAWING ARE OWNED BY, AND THE PROPERTY OF BKBC ARCHITECTS INC., AND WERE CREATED, EVOLVED AND DEVELOPED FOR USE ON, AND IN CONNECTION WITH THIS PROJECT. NONE OF SUCH IDEAS, DESIGN, ARRANGEMENTS, OR PLANS SHALL BE USED BY, OR DISCLOSED TO ANY PERSON, FIRM, OR CORPORATION FOR ANY PURPOSE WHATSOEVER WITHOUT THE WRITTEN PERMISSION OF BKBC ARCHITECTS INC. FILING THESE DRAWINGS OR SPECIFICATIONS WITH ANY PUBLIC AGENCY IS NOT A PUBLICATION OF SAME. NO COPYING, REPRODUCTION OR USE THEREOF IS PERMISSIBLE WITHOUT THE CONSENT OF BKBC ARCHITECTS INC.



Front Elevation

Back Elevation

Side Elevation



1

**Stucco / Trim Color 1**  
SW - 7738 "Cargo Pants"  
SBMF-48 FINISH



2

**Cultured Stone**  
Stacked Stone  
Castaway, Eldorado Stone  
or equivalent



3

**Roof Tiles**  
Cement Tile, Blended Colors  
Eagle Roofing, Bel Air, or equivalent



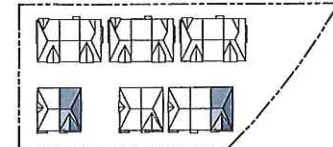
4

**Stucco / Trim Color 2**  
SW - 7734 "Olive Grove"  
SBMF-48 FINISH



5

**Door Color**  
SW - 6383 "Golden Rule"



**Unit A-2**

Color Scheme - 1  
Craftsman Style

**EXHIBIT** Ap32

ARCHITECTS  
**BKBC ARCHITECTS INC.**  
1371 OAKLAND BLVD, SUITE 101  
WALNUT CREEK, CA 94596  
925.930.9700 www.bkbcarch.com

PROJECT  
**FILBERT VILLAS**  
37243 & 37257 FILBERT ST, NEWARK, CA 94560  
DEVELOPER/OWNER  
**SRAJ Development Inc.**

DRAWING TITLE  
**Color and Material Board**

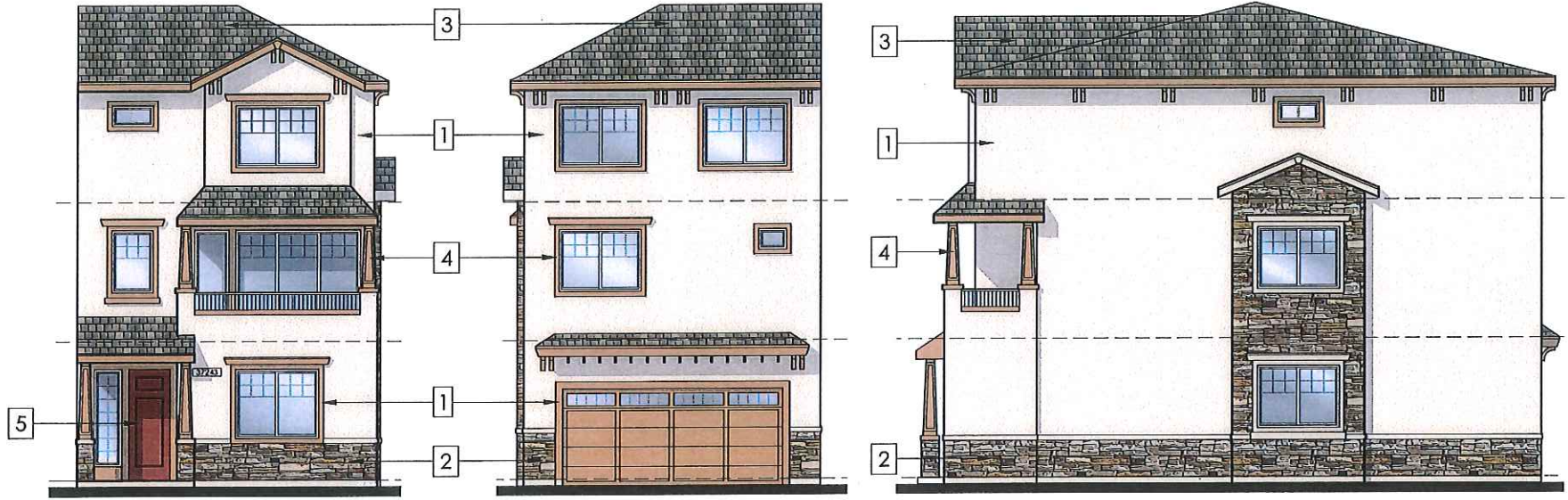
DATE:  
05/24/2017

SCALE:  
1/8" = 1'-0"

DRAWING NO:

**Ne-19d**

ALL IDEAS, DESIGN, ARRANGEMENTS AND PLANS INDICATED OR REPRESENTED BY THIS DRAWING ARE OWNED BY, AND THE PROPERTY OF BKBC ARCHITECTS INC., AND WERE CREATED, EVOLVED AND DEVELOPED FOR USE, DN, AND IN CONNECTION WITH THIS PROJECT. NONE OF SUCH IDEAS, DESIGN, ARRANGEMENTS, OR PLANS SHALL BE USED BY, OR DISCLOSED TO ANY PERSON, FIRM, OR CORPORATION FOR ANY PURPOSE WHATSOEVER WITHOUT THE WRITTEN PERMISSION OF BKBC ARCHITECTS INC. FILING THESE DRAWINGS OR SPECIFICATIONS WITH ANY PUBLIC AGENCY IS NOT A PUBLICATION OF SAME. NO COPYING, REPRODUCTION OR USE THEREOF IS PERMISSIBLE WITHOUT THE CONSENT OF BKBC ARCHITECTS INC.



Front Elevation

Back Elevation

Side Elevation



**1**  
**Stucco Color**  
 SW - 0035 "Indian White"  
 SBMF-48 FINISH



**2**  
**Cultured Stone**  
 Stacked Stone  
 Mountain Blend, Eldorado Stone  
 or equivalent



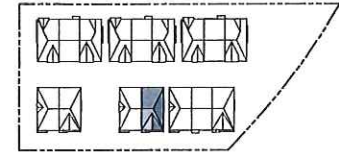
**3**  
**Roof Tiles**  
 Cement Tile, Blended Colors  
 Eagle Roofing, Bel Air, or equivalent



**4**  
**Trim Color**  
 SW - 0039 "Portrait Tone"



**5**  
**Door Color**  
 SW - 0033 "Rembrandt Ruby"



**Unit A-2**  
**Color Scheme - 2**  
 Craftsman Style  
**EXHIBIT** Ap33

DRAWING TITLE

Color and Material Board

DATE:

05/24/2017

SCALE:

1/8" = 1'-0"

DRAWING NO.:

**Ne-19e**

ARCHITECTS

**BKBC ARCHITECTS INC.**

1371 OAKLAND BLVD, SUITE 101  
 WALNUT CREEK, CA 94596

925.930.9700 www.bkbcarch.com

PROJECT

**FILBERT VILLAS**

3724S & 37257 FILBERT ST, NEWARK, CA 94560

DEVELOPER/ OWNER  
**SRAJ Development Inc.**

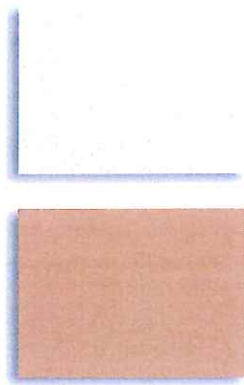


ALL IDEAS, DESIGN, ARRANGEMENTS AND PLANS INDICATED OR REPRESENTED BY THIS DRAWING ARE OWNED BY, AND THE PROPERTY OF BKBC ARCHITECTS INC., AND WERE CREATED, EVOLVED AND DEVELOPED FOR USE ON, AND IN CONNECTION WITH THIS PROJECT. NONE OF SUCH IDEAS, DESIGN, ARRANGEMENTS, OR PLANS SHALL BE USED BY, OR DISCLOSED TO ANY PERSON, FIRM, OR CORPORATION FOR ANY PURPOSE WHATSOEVER WITHOUT THE WRITTEN PERMISSION OF BKBC ARCHITECTS INC. USING THESE DRAWINGS OR SPECIFICATIONS WITH ANY PUBLIC AGENCY IS NOT A PUBLICATION OF SAID. NO COPYING, REPRODUCTION OR USE THEREOF IS PERMISSIBLE WITHOUT THE CONSENT OF BKBC ARCHITECTS INC.



Front Elevation

Back Elevation



**1**  
**Stucco / Trim Color 1**  
 SW - 0035 "Indian White"  
 SBMF-48 FINISH

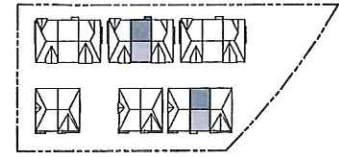
**2**  
**Stucco / Trim Color 2**  
 SW - 0039 "Portrait Tone"  
 SBMF-48 FINISH



**3**  
**Roof Tiles**  
 Cement Tile, Blended Colors  
 Eagle Roofing, Bel Air, or equivalent

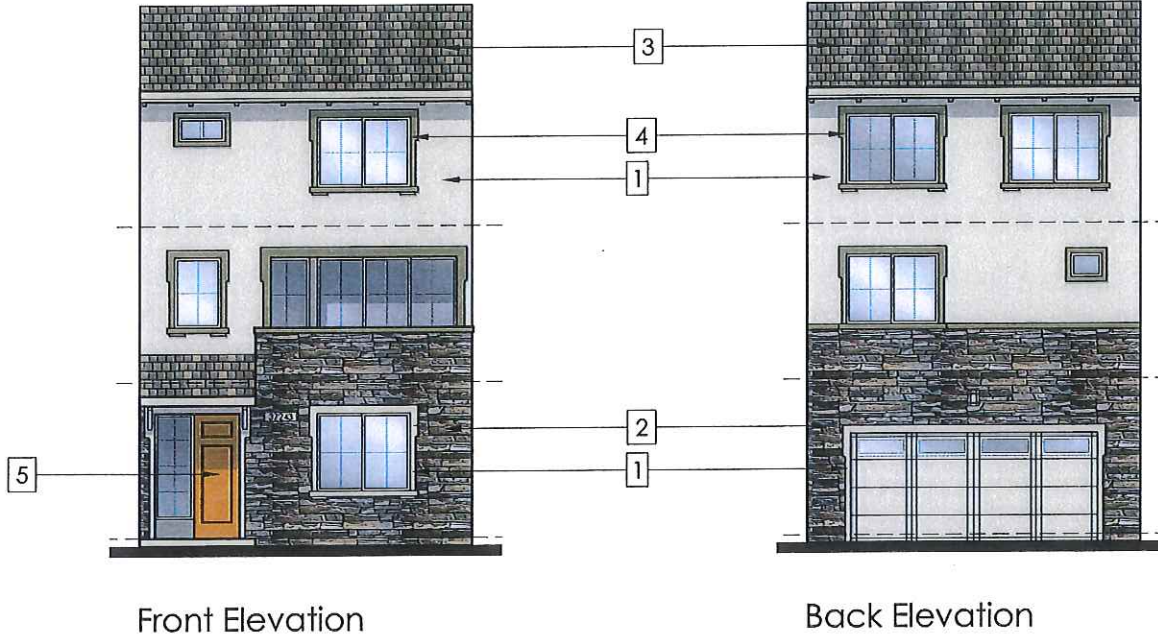


**4**  
**Door Color**  
 SW - 0033 "Rembrandt Ruby"



**Unit A-3**  
 Color Scheme - 1  
 Mediterranean Style  
**EXHIBIT** AP34

ALL IDEAS, DESIGN, ARRANGEMENTS AND PLANS INDICATED OR REPRESENTED BY THIS DRAWING ARE OWNED BY, AND THE PROPERTY OF BKBC ARCHITECTS INC., AND WERE CREATED, EVOLVED AND DEVELOPED FOR USE ON, AND IN CONNECTION WITH THIS PROJECT. NONE OF SUCH IDEAS, DESIGN, ARRANGEMENTS, OR PLANS SHALL BE USED BY, OR DISCLOSED TO ANY PERSON, FIRM, OR CORPORATION FOR ANY PURPOSE WHATSOEVER WITHOUT THE WRITTEN PERMISSION OF BKBC ARCHITECTS INC. FILING THESE DRAWINGS OR SPECIFICATIONS WITH ANY PUBLIC AGENCY IS NOT A PUBLICATION OF SAME. NO COPYING, REPRODUCTION OR USE THEREOF IS PERMISSIBLE WITHOUT THE CONSENT OF BKBC ARCHITECTS INC.



Front Elevation

Back Elevation



**1**  
**Stucco / Trim Color**  
 SW - 7738 "Cargo Pants"  
 SBMF-48 FINISH



**2**  
**Cultured Stone**  
 Stacked Stone  
 Castaway, Eldorado Stone  
 or equivalent



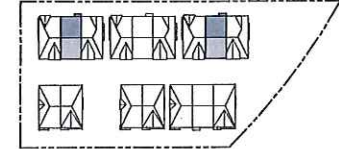
**3**  
**Roof Tiles**  
 Cement Tile, Blended Colors  
 Eagle Roofing, Bel Air, or equivalent



**4**  
**Trim Color**  
 SW - 7734 "Olive Grove"



**5**  
**Door Color**  
 SW - 6383 "Golden Rule"



**Unit A-3**  
 Color Scheme - 2  
 Mediterranean Style  
**EXHIBIT** Ap35

ARCHITECTS  
**BKBC ARCHITECTS INC.**  
 1371 OAKLAND BLVD, SUITE 101  
 WALNUT CREEK, CA 94596  
 925.930.9700 www.bkbcarch.com

PROJECT  
**FILBERT VILLAS**  
 37243 & 37257 FILBERT ST., NEWARK, CA 94560  
 DEVELOPER / OWNER  
**SRAJ Development inc.**

DRAWING TITLE  
**Color and Material Board**

DATE:  
 05/24/2017

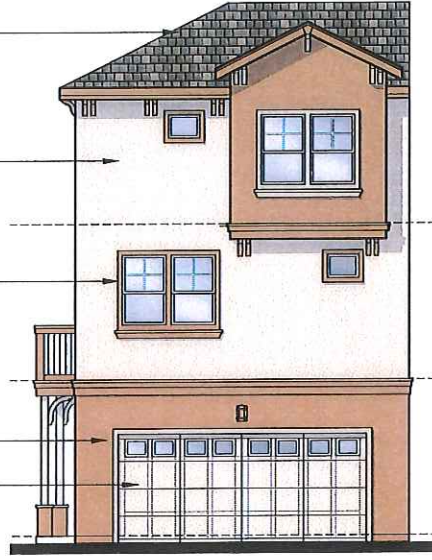
SCALE:  
 1/8" = 1'-0"

DRAWING NO:  
**Ne-19g**

ALL IDEAS, DESIGN, ARRANGEMENTS AND PLANS INDICATED OR REPRESENTED BY THIS DRAWING ARE OWNED BY, AND THE PROPERTY OF BKBC ARCHITECTS INC., AND WERE CREATED, EVOLVED AND DEVELOPED FOR USE ON, AND IN CONNECTION WITH THIS PROJECT. NONE OF SUCH IDEAS, DESIGN, ARRANGEMENTS, OR PLANS SHALL BE USED BY, OR DISCLOSED TO ANY PERSON, FIRM, OR CORPORATION FOR ANY PURPOSE WHATSOEVER WITHOUT THE WRITTEN PERMISSION OF BKBC ARCHITECTS INC. FILING THESE DRAWINGS OR SPECIFICATIONS WITH ANY PUBLIC AGENCY IS NOT A PUBLICATION OF SAME. NO COPYING, REPRODUCTION OR USE THEREOF IS PERMISSIBLE WITHOUT THE CONSENT OF BKBC ARCHITECTS INC.



Front Elevation



Back Elevation



Side Elevation



**1**  
**Stucco / Trim Color 1**  
 SW - 0035 "Indian White"  
 SBMF-48 FINISH



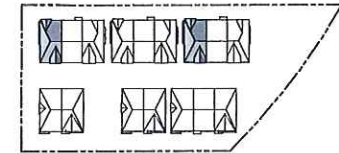
**2**  
**Stucco / Trim Color 2**  
 SW - 0039 "Portrait Tone"  
 SBMF-48 FINISH



**3**  
**Roof Tiles**  
 Cement Tile, Blended Colors  
 Eagle Roofing, Bel Air, or equivalent



**4**  
**Door Color**  
 SW - 6418 "Rural Green"



**Unit B**  
 Color Scheme - 1  
 Craftsman Style

**EXHIBIT** Ap36

DRAWING TITLE

Color and Material Board

DATE:

05/24/2017

SCALE:

1/8" = 1'-0"

DRAWING NO:

**Ne-19h**

ARCHITECTS

**FILBERT VILLAS**  
 37243 & 37257 FILBERT ST., NEWARK, CA 94560

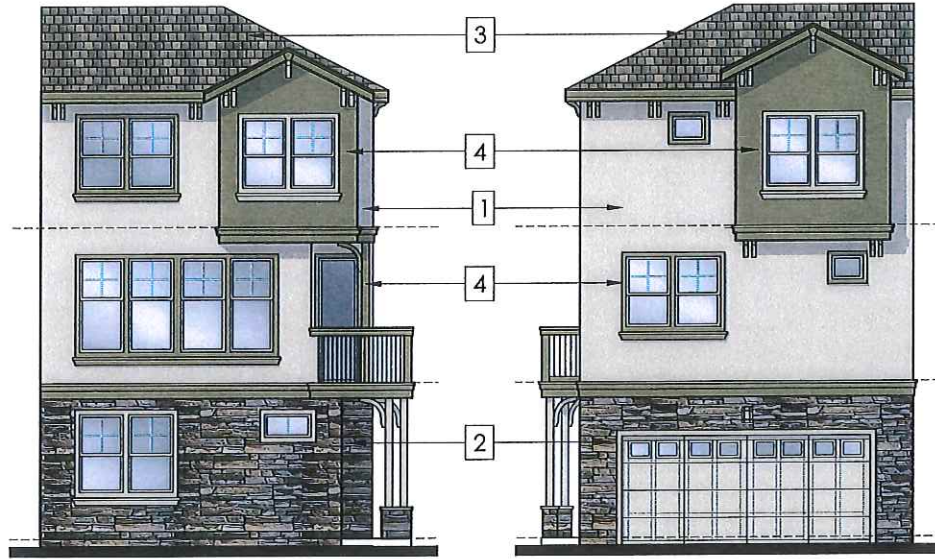
DEVELOPER / OWNER  
**SRAJ Development Inc.**

**BKBC ARCHITECTS INC.**

1371 OAKLAND BLVD., SUITE 101  
 WALNUT CREEK, CA 94596

925.930.9700 www.bkbcarch.com

ALL IDEAS, DESIGN, ARRANGEMENTS AND PLANS INDICATED OR REPRESENTED BY THE DRAWING ARE OWNED BY AND THE PROPERTY OF BKBC ARCHITECTS INC. AND WERE CREATED, DEVELOPED AND DISCLOSED FOR USE ON AND IN CONNECTION WITH THIS PROJECT. NONE OF SUCH IDEAS, DESIGN, ARRANGEMENTS, OR PLANS SHALL BE USED BY, OR DISCLOSED TO ANY PERSON, FIRM, OR CORPORATION FOR ANY PURPOSE WHATSOEVER WITHOUT THE WRITTEN PERMISSION OF BKBC ARCHITECTS INC. FILING THESE DRAWINGS OR SPECIFICATIONS WITH ANY PUBLIC AGENCY IS NOT A PUBLICATION OF SAME. NO COPYING, REPRODUCTION OR USE THEREOF IS PERMISSIBLE WITHOUT THE CONSENT OF BKBC ARCHITECTS INC.



Front Elevation

Back Elevation



Side Elevation



1

**Stucco / Trim Color 1**  
SW - 7738 "Cargo Pants"  
SBMF-48 FINISH



2

**Cultured Stone**  
Stacked Stone  
Castaway, Eldorado Stone  
or equivalent



3

**Roof Tiles**  
Cement Tile, Blended Colors  
Eagle Roofing, Bel Air, or equivalent



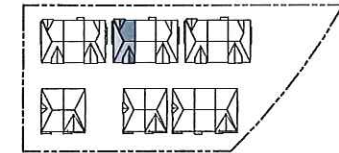
4

**Stucco / Trim Color 2**  
SW - 7734 "Olive Grove"  
SBMF-48 FINISH



5

**Door Color**  
SW - 0033 "Rembrandt Ruby"



**Unit B**

Color Scheme - 2

Craftsman Style

**EXHIBIT** Ap37

DRAWING TITLE

Color and Material Board

DATE:

05/24/2017

SCALE:

1/8" = 1'-0"

DRAWING NO.:

**Ne-191**

ARCHITECTS

**FILBERT VILLAS**  
37245 & 37257 FILBERT ST., NEWARK, CA 94560

DEVELOPER / OWNER

**SRAJ Development Inc.**

**BKBC ARCHITECTS INC.**

1371 OAKLAND BLVD., SUITE 101  
WALNUT CREEK, CA 94596

925.930.9700 www.bkbcarch.com

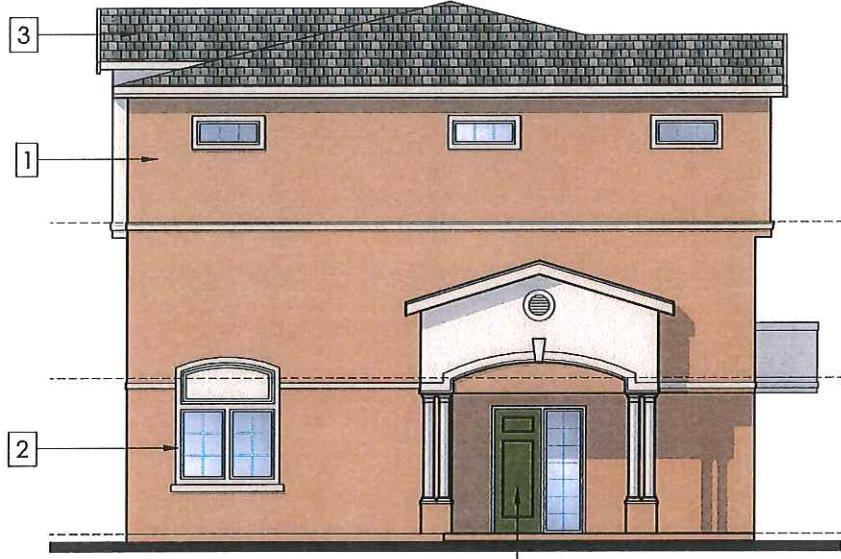
ALL IDEAS, DESIGN, ARRANGEMENTS AND PLANS INDICATED OR REPRESENTED BY THE DRAWINGS ARE OWNED BY AND THE PROPERTY OF BKBC ARCHITECTS INC. AND WERE CREATED, REVISED AND DEVELOPED FOR USE ON AND IN CONNECTION WITH THIS PROJECT. NONE OF SUCH IDEAS, DESIGN, ARRANGEMENTS, OR PLANS SHALL BE USED BY, OR DISCLOSED TO ANY PERSON, FIRM, OR CORPORATION FOR ANY PURPOSE WHATSOEVER WITHOUT THE WRITTEN PERMISSION OF BKBC ARCHITECTS INC. FILING THESE DRAWINGS OR SPECIFICATIONS WITH ANY PUBLIC AGENCY IS NOT A PUBLICATION OF SAME. NO COPYING, REPRODUCTION OR USE THEREOF IS PERMISSIBLE WITHOUT THE CONSENT OF BKBC ARCHITECTS INC.



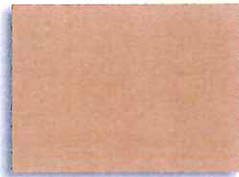
Front Elevation



Back Elevation



Side Elevation



1

**Stucco / Trim Color 1**  
SW - 0039 "Portrait Tone"  
SBMF-48 FINISH



2

**Stucco / Trim Color 2**  
SW - 0035 "Indian White"  
SBMF-48 FINISH



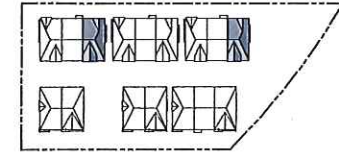
3

**Roof Tiles**  
Cement Tile, Blended Colors  
Eagle Roofing, Bel Air, or equivalent



4

**Door Color**  
SW - 6418 "Rural Green"



**Unit C**  
Color Scheme - 1  
Mediterranean Style  
**EXHIBIT Ap38**

ARCHITECTS  
**BKBC ARCHITECTS INC.**  
1371 OAKLAND BLVD, SUITE 101  
WALNUT CREEK, CA 94596  
925.930.9700 www.bkbcarch.com

PROJECT  
**FILBERT VILLAS**  
37248 & 37257 FILBERT ST. NEWARK, CA 94560  
DEVELOPER/ OWNER  
**SRAJ Development Inc.**

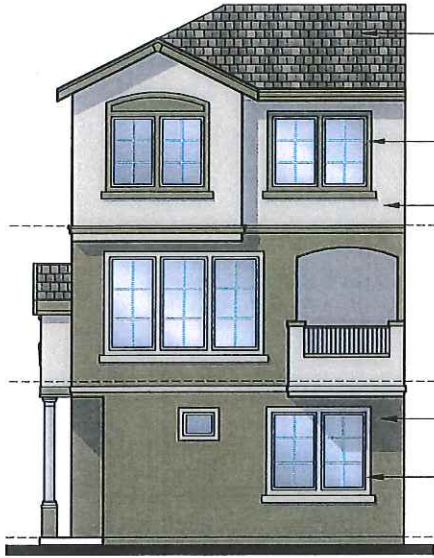
DRAWING TITLE  
**Color and Material Board**

DATE: 05/24/2017

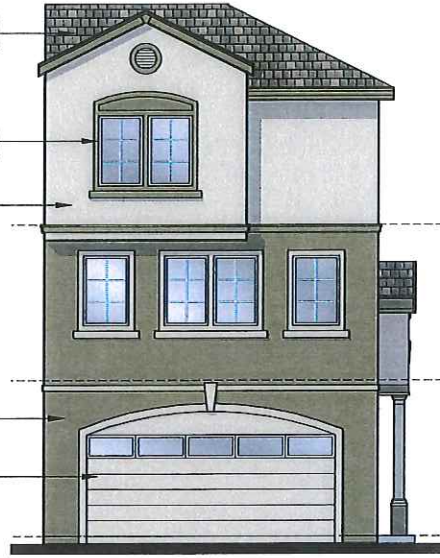
SCALE: 1/8" = 1'-0"

DRAWING NO: **Ne-19j**

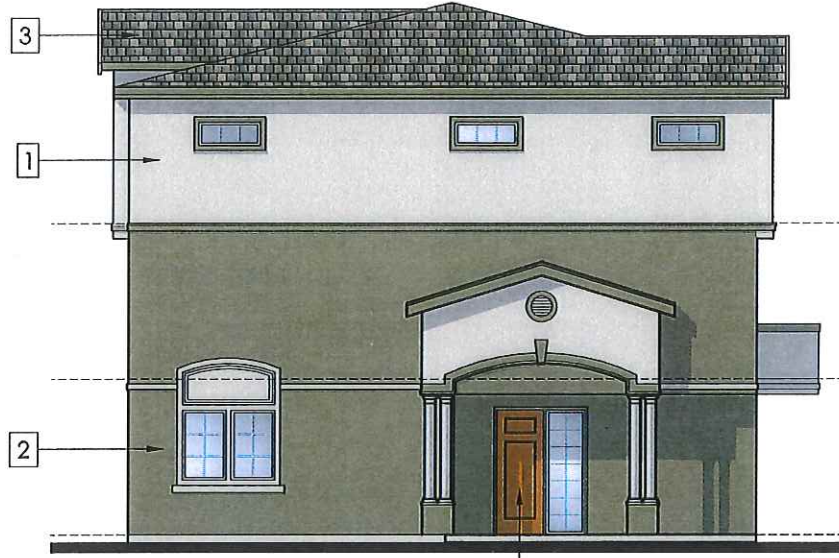
ALL IDEAS, DESIGN, ARRANGEMENTS AND PLANS INDICATED OR REPRESENTED BY THIS DRAWING ARE OWNED BY, AND THE PROPERTY OF BKBC ARCHITECTS INC., AND WERE CREATED, EVOLVED AND DEVELOPED FOR USE ON, AND IN CONNECTION WITH THIS PROJECT. NONE OF SUCH IDEAS, DESIGN, ARRANGEMENTS, OR PLANS SHALL BE USED BY, OR DISCLOSED TO ANY PERSON, FIRM, OR CORPORATION FOR ANY PURPOSE WHATSOEVER WITHOUT THE WRITTEN PERMISSION OF BKBC ARCHITECTS INC. FEELING THESE DRAWINGS OR SPECIFICATIONS WITH ANY PUBLIC AGENCY IS NOT A PUBLICATION OF SAME. NO COPYING, REPRODUCTION OR USE THEREOF IS PERMISSIBLE WITHOUT THE CONSENT OF BKBC ARCHITECTS INC.



Front Elevation



Back Elevation



Side Elevation



1

**Stucco / Trim Color 1**  
SW - 7738 "Cargo Pants"  
SBMF-48 FINISH



2

**Stucco / Trim Color 2**  
SW - 7734 "Olive Grove"  
SBMF-48 FINISH



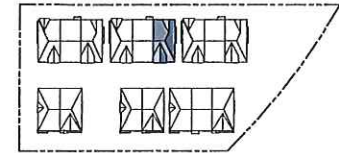
3

**Roof Tiles**  
Cement Tile, Blended Colors  
Eagle Roofing, Bel Air, or equivalent



4

**Door Color**  
SW - 6383 "Golden Rule"



**Unit C**

Color Scheme - 2

Mediterranean Style

**EXHIBIT** Ap39

ARCHITECTS  
**BKBC ARCHITECTS INC.**  
1371 OAKLAND BLVD, SUITE 101  
WALNUT CREEK, CA 94596  
925.930.9700 www.bkbcarch.com

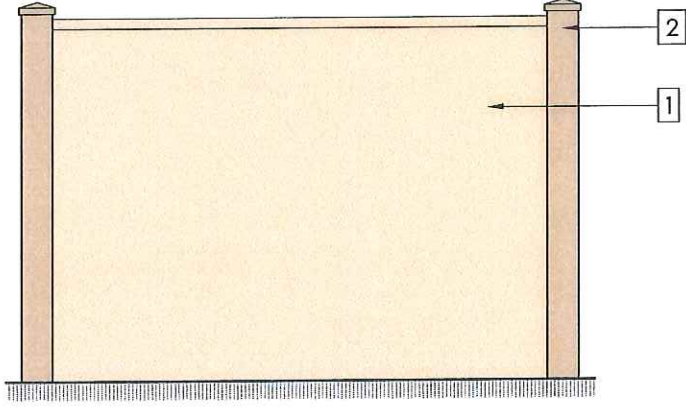
PROJECT  
**FILBERT VILLAS**  
37243 & 37257 FILBERT ST, NEWARK, CA 94560  
DEVELOPER/OWNER  
**SRAJ Development Inc.**

DRAWING TITLE  
**Color and Material Board**

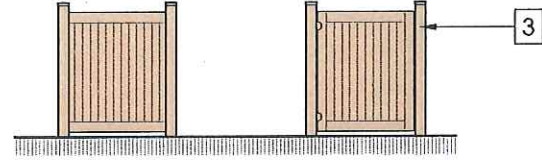
DATE:  
05/24/2017  
SCALE:  
1/8" = 1'-0"  
DRAWING NO.:

**Ne-19k**

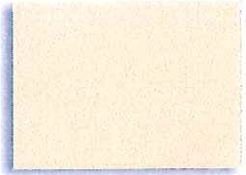
ALL IDEAS, DESIGN, ARRANGEMENTS AND PLANS INDICATED OR REPRESENTED BY THIS DRAWING ARE OWNED BY, AND THE PROPERTY OF BKBC ARCHITECTS INC., AND WERE CREATED, EVOLVED AND DEVELOPED FOR USE ON, AND IN CONNECTION WITH THIS PROJECT. NONE OF SUCH IDEAS, DESIGN, ARRANGEMENTS, OR PLANS SHALL BE USED BY, OR DISCLOSED TO ANY PERSON, FIRM, OR CORPORATION FOR ANY PURPOSE WHATSOEVER WITHOUT THE WRITTEN PERMISSION OF BKBC ARCHITECTS INC. FILING THESE DRAWINGS OR SPECIFICATIONS WITH ANY PUBLIC AGENCY IS NOT A PUBLICATION OF SAME. NO COPYING, REPRODUCTION OR USE THEREOF IS PERMISSIBLE WITHOUT THE CONSENT OF BKBC ARCHITECTS INC.



Masonry Wall

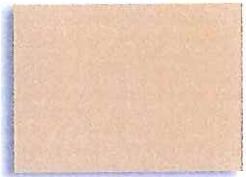


A/C Unit Screen



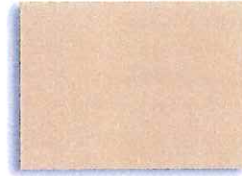
1

**Stucco**  
SW - 6141 "Softer Tan"  
SBMF-48 FINISH



2

**Stucco**  
SW - 6143 "Basket Beige"  
SBMF-48 FINISH



3

**Vynil Post and Panel**  
SW - 6143 "Basket Beige"

Masonry Wall and A/C Unit Screen Elevation

**EXHIBIT** A p 40

DRAWING TITLE

Color and Material Board

DATE:

05/24/2017

SCALE:

1/4" = 1'-0"

DRAWING NO:

**Ne-191**

ARCHITECTS

**BKBC ARCHITECTS INC.**

1371 OAKLAND BLVD. SUITE 101  
WALNUT CREEK, CA 94596

925.930.9700 www.bkbccatch.com

PROJECT

**FILBERT VILLAS**

37243 & 37257 FILBERT ST. NEWARK, CA 94560

DEVELOPER/OWNER  
**SRAJ Development Inc.**

ALL IDEAS, DESIGN, ARRANGEMENTS AND PLANS INDICATED OR REPRESENTED BY THIS DRAWING ARE OWNED BY, AND THE PROPERTY OF BKBC ARCHITECTS INC., AND WERE CREATED, DEVELOPED FOR USE ON, AND IN CONNECTION WITH THIS PROJECT. NONE OF SUCH IDEAS, DESIGN, ARRANGEMENTS, OR PLANS SHALL BE USED BY, OR DISCLOSED TO ANY PERSON, FIRM, OR CORPORATION FOR ANY PURPOSE WHATSOEVER WITHOUT THE WRITTEN PERMISSION OF BKBC ARCHITECTS INC. FILING THESE DRAWINGS OR SPECIFICATIONS WITH ANY PUBLIC AGENCY IS NOT A PUBLICATION OF SAME. NO COPYING, REPRODUCTION OR USE THEREOF IS PERMISSIBLE WITHOUT THE CONSENT OF BKBC ARCHITECTS INC.



**EXHIBIT** Ap41

DRAWING TITLE  
**Aerial View**

DATE:  
05/24/2017

SCALE:  
N.T.S.

DRAWING NO:

**Ne -20a**

ARCHITECTS  
**BKBC ARCHITECTS IN**  
1371 OAKLAND BLVD, SUITE 101  
WALNUT CREEK, CA 94596  
925.930.9700 www.bkbcarch.ca

PROJECT  
**FILBERT VILLAS**  
37243 & 37257 FILBERT ST. NEWARK, CA 94560  
DEVELOPER/ OWNER  
**SRAJ Development Inc.**



ALL IDEAS, DESIGN, ARRANGEMENTS AND PLANS INDICATED OR REPRESENTED BY THIS DRAWING ARE OWNED BY, AND THE PROPERTY OF BKBC ARCHITECTS INC., AND WERE CREATED, EVOLVED AND DEVELOPED FOR USE ON, AND IN CONNECTION WITH THIS PROJECT. NONE OF SUCH IDEAS, DESIGN, ARRANGEMENTS, OR PLANS SHALL BE USED BY, OR DISCLOSED TO ANY PERSON, FIRM, OR CORPORATION FOR ANY PURPOSE WHATSOEVER WITHOUT THE WRITTEN PERMISSION OF BKBC ARCHITECTS INC. FILING THESE DRAWINGS OR SPECIFICATIONS WITH ANY PUBLIC AGENCY IS NOT A PUBLICATION OF SAME. NO COPYING, REPRODUCTION OR USE THEREOF IS PERMISSIBLE WITHOUT THE CONSENT OF BKBC ARCHITECTS INC.



**Site Amenities**  
**EXHIBIT** Ap42

DRAWING TITLE

DATE:

05/24/2017

SCALE:

NTS

DRAWING NO.:

Ne -21a

ARCHITECTS  
**BKBC ARCHITECTS INC.**  
1371 OAKLAND BLVD, SUITE 101  
WALNUT CREEK, CA 94596  
925.930.9700 www.bkbcarch.com

PROJECT  
**FILBERT VILLAS**  
37243 & 37257 FILBERT ST., NEWARK, CA 94560  
DEVELOPER/OWNER  
**SRAJ Development Inc.**

ALL IDEAS, DESIGN, ARRANGEMENTS AND PLANS INDICATED OR REPRESENTED BY THIS DRAWING ARE OWNED BY AND THE PROPERTY OF BKBC ARCHITECTS INC. AND WERE CREATED, DEVELOPED AND DELIVERED FOR USE BY AND IN CONNECTION WITH THIS PROJECT. NONE OF SUCH IDEAS, DESIGN, ARRANGEMENTS, OR PLANS SHALL BE USED BY, OR DISCLOSED TO ANY PERSON, FIRM, OR CORPORATION FOR ANY PURPOSE WHATSOEVER WITHOUT THE WRITTEN PERMISSION OF BKBC ARCHITECTS INC. FILING THESE DRAWINGS OR SPECIFICATIONS WITH ANY PUBLIC AGENCY IS NOT A PUBLICATION OF SAME. NO COPYING, REPRODUCTION OR USE THEREOF IS PERMISSIBLE WITHOUT THE CONSENT OF BKBC ARCHITECTS INC.



## loop

The Loop bike rack is a simple, sweeping circle with a twist. Cyclists can loop and lock one bike or two around its shape-shifting cast aluminum ribbon frame. Functional and sculptural, it meets a growing need for secure bicycle docking in recreational spaces and "complete streets," carrying on the 35 Collection mission to support social activity in outdoor space.

# EXHIBIT Ap43 Bicycle Rack

Landscape Forms 35 Loop

DRAWING TITLE

DATE:

05/24/2017

SCALE:

NTS

DRAWING NO.:

Ne -21b

ARCHITECTS

**BKBC ARCHITECTS INC.**

1371 OAKLAND BLVD, SUITE 101  
WALNUT CREEK, CA 94596

925.930.9700 www.bkbcarch.com

PROJECT

**FILBERT VILLAS**

37243 & 37257 FILBERT ST., NEWARK, CA 94560

DEVELOPER/OWNER

**SRAJ Development Inc.**

ALL IDEAS, DESIGN, ARRANGEMENTS AND PLANS INDICATED OR REPRESENTED BY THIS DRAWING ARE OWNED BY, AND THE PROPERTY OF BKBC ARCHITECTS INC., AND WERE CREATED, EVOLVED AND DEVELOPED FOR USE ON AND IN CONNECTION WITH THIS PROJECT. NONE OF SUCH IDEAS, DESIGN, ARRANGEMENTS, OR PLANS SHALL BE USED BY, OR DISCLOSED TO ANY PERSON, FIRM, OR CORPORATION FOR ANY PURPOSE WHATSOEVER WITHOUT THE WRITTEN PERMISSION OF BKBC ARCHITECTS INC. FILING THESE DRAWINGS OR SPECIFICATIONS WITH ANY PUBLIC AGENCY IS NOT A PUBLICATION OF SAME. NO COPYING, REPRODUCTION OR USE THEREOF IS PERMISSIBLE WITHOUT THE CONSENT OF BKBC ARCHITECTS INC.



**Our Purpose Is To Enrich Outdoor Spaces**

We believe in the power of design and its ability to influence and elevate the quality of public space. High quality products and outstanding customer experience makes us one of the world's premier designers and manufacturers of outdoor commercial furnishings.

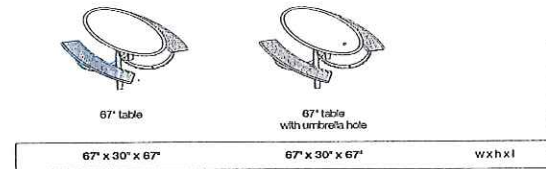
**To Specify**

Specify a Charlie table, with or without umbrella hole and powdercoat color. Charlie ships with mounting hardware.

**Charlie Specifications**

The Charlie table is a 67" oval that seats up to 6 people. Steel seat panels have a perforated pattern, and are surrounded by cast aluminum trim. Ribbon-like steel legs support the steel/aluminum table top, and are surface mounted through stainless steel glides/inserts. Stainless steel anchor hardware ships with the table. An offset umbrella hole option is available.

Charlie is ADA compliant and must be surface mounted.



**EXHIBIT** *Ap244* **Picnic Table**  
Landscape Forms Charlie

ARCHITECTS  
**BKBC ARCHITECTS INC.**  
1371 OAKLAND BLVD, SUITE 101  
WALNUT CREEK, CA 94596  
925.930.9700 www.bkbcarch.com

PROJECT  
**FILBERT VILLAS**  
37243 & 37257 FILBERT ST, NEWARK, CA 94660  
DEVELOPER/OWNER  
**SRAJ Development Inc.**

DRAWING TITLE  
DATE: 05/24/2017  
SCALE: NTS  
DRAWING NO: Ne -21c

ALL IDEAS, DESIGN, ARRANGEMENTS AND PLANS INDICATED OR REPRESENTED BY THESE DRAWINGS ARE OWNED BY AND THE PROPERTY OF BKBC ARCHITECTS INC. AND WERE CREATED, DEVELOPED AND CONSIDERED FOR USE BY AND IN CONNECTION WITH THIS PROJECT. NO PART OF THIS DOCUMENT OR ANY INFORMATION CONTAINED HEREIN SHALL BE REPRODUCED OR TRANSMITTED IN ANY FORM OR BY ANY MEANS, ELECTRONIC OR MECHANICAL, INCLUDING PHOTOCOPYING, RECORDING, OR BY ANY INFORMATION STORAGE AND RETRIEVAL SYSTEM, WITHOUT THE WRITTEN PERMISSION OF BKBC ARCHITECTS INC. THIS PROJECT IS THE PROPERTY OF BKBC ARCHITECTS INC. AND WERE CREATED, DEVELOPED AND CONSIDERED FOR USE BY AND IN CONNECTION WITH THIS PROJECT. NO PART OF THIS DOCUMENT OR ANY INFORMATION CONTAINED HEREIN SHALL BE REPRODUCED OR TRANSMITTED IN ANY FORM OR BY ANY MEANS, ELECTRONIC OR MECHANICAL, INCLUDING PHOTOCOPYING, RECORDING, OR BY ANY INFORMATION STORAGE AND RETRIEVAL SYSTEM, WITHOUT THE WRITTEN PERMISSION OF BKBC ARCHITECTS INC.

**Scarborough™ Specifications**

**Bench**

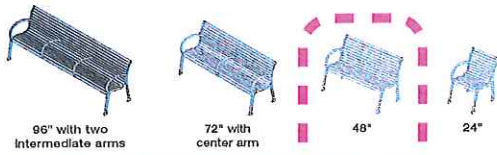
Woven and horizontal strap seat styles may be specified for backed or backless benches. Backed benches are offered in 24", 48", 72", or 96" lengths. Backless benches are offered in 48", 72", or 96" lengths. Center arm may be specified on backed or backless benches in 48", 72", or 96" lengths. Bench in 96" length available with two intermediate arms.



center arm

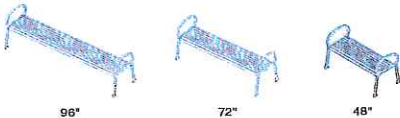
Support end frames are 1" x 1" solid steel, joined by 1-1/2" dia., .120" wall thickness tubular steel. Seating panels are horizontal steel straps (1-1/2" x 3/16" ) or woven stainless steel straps (1-1/2" x 1/8"). Scarborough bench comes standard with surface/freestanding mount support.

**backed horizontal strap**



96" with two intermediate arms    28" x 34" x 96"  
 72" with center arm    28" x 34" x 72"  
 48"    28" x 34" x 48"  
 24"    28" x 34" x 24"    d x h x l

**backless horizontal strap**



96"    26" x 28" x 96"  
 72"    26" x 28" x 72"  
 48"    26" x 28" x 48"    d x h x l

**Finishes**

Metal is finished with Landscape Forms' proprietary Pangard II® polyester powdercoat, a hard yet flexible finish that resists rusting, chipping, peeling and fading. Call for standard color chart.

**To Specify**

**Bench:** Specify backed or backless, bench length, horizontal strap or woven seat style, with or without center/intermediate arm, end powdercoat color.  
**Litter receptacle:** Select top- or side-opening, vertical strap or square bar side panel, powdercoat color. If optional powdercoat color is specified, select standard powdercoat color for liner. Options: keyed lock; ash pan on side-opening units.



**Bench Seating (Under Gazebo)**  
 Landscape Forms Scarborough  
**EXHIBIT** Ap45

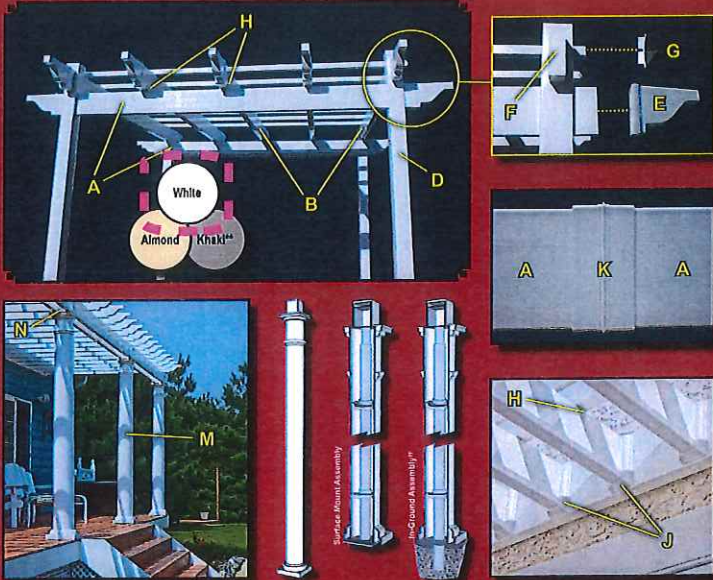
ARCHITECTS  
**BKBC ARCHITECTS INC.**  
 1371 OAKLAND BLVD, SUITE 101  
 WALNUT CREEK, CA 94596  
 925.930.9700    www.bkbccarch.com

PROJECT  
**FILBERT VILLAS**  
 37243 & 37257 FILBERT ST. NEWARK, CA 94560  
 DEVELOPER/OWNER  
**SRAJ Development Inc.**

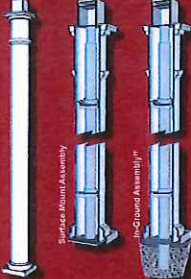
DRAWING TITLE  
 DATE: 05/24/2017  
 SCALE: NTS  
 DRAWING NO: Ne -21d

ALL IDEAS, DESIGN, INSTRUMENTS AND PLANS INDICATED OR REPRESENTED IN THIS DRAWING ARE RESERVED BY THE DRAWING USER. THESE IDEAS, DESIGN, INSTRUMENTS AND PLANS ARE DEVELOPED FOR USE ON, AND IN CONNECTION WITH, THIS PROJECT. NO PART OF THIS DRAWING OR ANY INFORMATION CONTAINED HEREIN SHALL BE REPRODUCED OR TRANSMITTED IN ANY FORM OR BY ANY MEANS, ELECTRONIC OR MECHANICAL, INCLUDING PHOTOCOPYING, RECORDING, OR BY ANY INFORMATION STORAGE AND RETRIEVAL SYSTEM, WITHOUT THE WRITTEN PERMISSION OF BKBC ARCHITECTS INC.

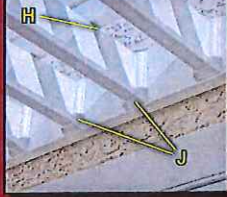
# COMPONENTS



\*NOTE: Not all components are available in Khaki color.

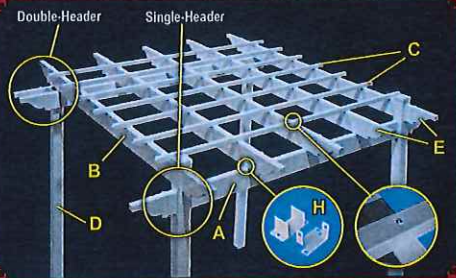


\*NOTE: In-Ground Assembly post approximately 36 inches into concrete.

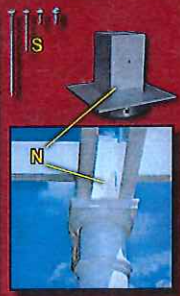


# COMPONENTS

- COMPONENTS LIST**
- A - Headers (2" x 6" or 2" x 8")
  - B - Stringers (2" x 3 1/2", 2" x 6", or 2" x 8")
  - C - Balusters (1 1/2" x 1 1/2")
  - D - Square Posts (4" x 4", 5" x 5", 6" x 6", 8" x 8")
  - E - Scroll Caps (2" x 3 1/2", 2" x 6", 2" x 8")
  - F - Flat End Caps (2" x 3 1/2", 2" x 6" or 2" x 8")
  - G - Baluster Caps (1 1/2" x 1 1/2")
  - H - Stringer Brackets / Clips (1 1/2" x 1 1/2", 2" x 2")
  - J - Jolst Hanger (2" x 6")
  - K - Extension Coupler (2" x 6")
  - M - Round Columns (8" Straight, 6" Tapered, or 10" Tapered)
  - N - Round Column Pergola Bracket
  - S - Screws (5", 2 1/2", 3/4" wood and 1/2" hex head)



- HEADER / STRINGER OPTIONS\***
- 
1. - Ribbed (2" x 6", 2" x 8")
  2. - Hollow (2" x 3 1/2", 2" x 6", 2" x 8")
  3. - Hollow w/Aluminum Insert (2" x 6")
  4. - Example of Hollow w/Lumber (Lumber not included)
- \*NOTE: Treated Lumber inserts are recommended for hollow headers and stringers.



\*NOTE: Headers and Stringers may span up to 18 feet between posts/columns with aluminum or lumber inserts.



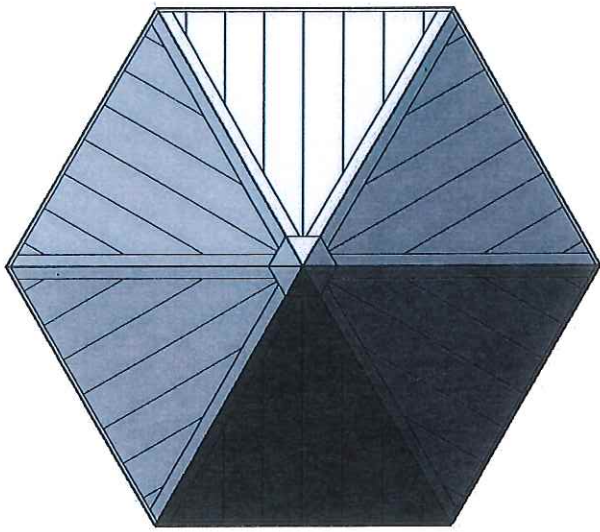
**EXHIBIT** Ap446 **Pergola**  
Shoreline Vinyl Systems

DRAWING TITLE: \_\_\_\_\_  
DATE: 05/24/2017  
SCALE: \_\_\_\_\_  
NTS  
DRAWING NO: \_\_\_\_\_  
**Ne -21e**

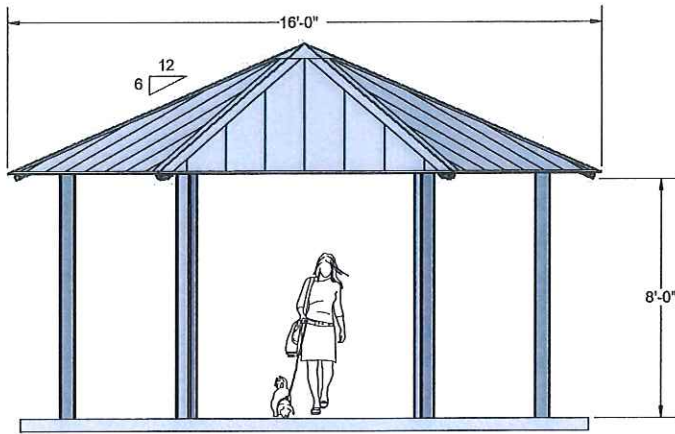
ARCHITECTS  
**BKBC ARCHITECTS INC.**  
1371 OAKLAND BLVD, SUITE 101  
WALNUT CREEK, CA 94596  
925.930.9700 www.bkbcarcch.com

PROJECT  
**FILBERT VILLAS**  
37248 & 37257 FILBERT ST. NEWARK, CA 94560  
DEVELOPER/ OWNER  
**SRAJ Development Inc.**

ALL IDEAS, DESIGN, ARRANGEMENTS AND PLANS INDICATED OR REPRESENTED BY THIS DRAWING ARE OWNED BY AND THE PROPERTY OF BKBC ARCHITECTS INC. AND WERE CREATED, DEVELOPED AND REFINED FOR USE ON AND IN CONNECTION WITH THIS PROJECT. NONE OF SUCH IDEAS, DESIGN, ARRANGEMENTS, OR PLANS SHALL BE USED BY, OR DISCLOSED TO ANY PERSON, FIRM, OR CORPORATION FOR ANY PURPOSE WHATSOEVER WITHOUT THE WRITTEN PERMISSION OF BKBC ARCHITECTS INC. FILING THESE DRAWINGS OR SPECIFICATIONS WITH ANY PUBLIC AGENCY IS NOT A PUBLICATION OR USE THEREOF. IS PERMISSIBLE WITHOUT THE CONSENT OF BKBC ARCHITECTS INC.



PLAN VIEW




ELEVATION VIEW


**SHINGLE**  
Roof Color




Timberland Shingle


High-Tension & Extreme weather-resistant materials for Max RS and Shingle Roof Systems






**ROOF OPTIONS**









  
Standing Seam

  
Max RS










  
Multi RS

  
Shingle

**ROOF COLORS OPTIONS**


 Royal White	 Blue White	 Slatestone	 Sage Grey	 Almond	 Blackstone
 Ash Grey	 Slate Grey	 Onyx	 Black Rock	 Modern Bronze	 Dark Bronze
 Pavestone Bronze	 Pavestone Green	 Emerald	 Amethyst	 Chestnut Red	 Royal Blue
 Copper Penny	 Brandywine	 Horrid Green	 Brite Red		


**METAL COLUMN COLOR OPTIONS**


 Brite Red MS	 Pavestone MS	 Onyx MS	 Amethyst MS	 Copper Penny MS	 Royal White MS
 Max Green MS	 Brite Grey MS	 Dusty Grey MS	 Brite Brown MS	 Amethyst MS	 Cream MS
 Ultra Turquoise MS	 Green Blue MS	 Brite Blue MS	 Brite Blue MS	 Azule Blue MS	 Jet Black MS


Additional Color for Premium Colors: Royal Blue, Copper Penny, Brandywine, Horrid Green, and Brite Red.

**Column Options**

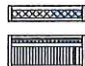
 Square (Standard)

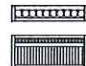
 Round

 Ultra Square

 Ultra Round

**Lattice Options**  
*For upper tier, enclosed and handrails*

 Diamond

 Grid

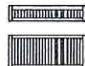
 Screen

EXHIBIT A<sub>14</sub>7

Gazebo  
UltraShelter Hexagon

ARCHITECTS  
**BKBC ARCHITECTS INC.**  
 1371 OAKLAND BLVD, SUITE 101  
 WALNUT CREEK, CA 94596  
 925.930.9700 www.bkbcarch.com

PROJECT  
**FILBERT VILLAS**  
 37243 & 37257 FILBERT ST., NEWARK, CA 94560  
 DEVELOPER / OWNER  
**SRAJ Development Inc.**

DRAWING TITLE  
 DATE: 05/24/2017  
 SCALE: NTS  
 DRAWING NO: Ne -21f

ALL IDEAS, DESIGN, ARRANGEMENTS AND PLANS INDICATED OR REPRESENTED BY THIS DRAWING ARE OWNED BY, AND THE PROPERTY OF BKBC ARCHITECTS INC., AND WERE CREATED, EVOLVED AND DEVELOPED FOR USE BY, AND IN CONNECTION WITH THIS PROJECT. NONE OF SUCH IDEAS, DESIGN, ARRANGEMENTS, OR PLANS SHALL BE USED BY, OR DISCLOSED TO ANY PERSON, FIRM, OR CORPORATION FOR ANY PURPOSE WHATSOEVER WITHOUT THE WRITTEN PERMISSION OF BKBC ARCHITECTS INC. FILING THESE DRAWINGS OR SPECIFICATIONS WITH ANY PUBLIC AGENCY IS NOT A PUBLICATION OF SAME. NO COPYING, REPRODUCTION OR USE THEREOF IS PERMISSIBLE WITHOUT THE CONSENT OF BKBC ARCHITECTS INC.

Silver Street  
SW VIEW

R5

FOR KIDS  
AGES  
5-12



STRUCTURE#: PlayHouse  
PROJECT#:  
DATE: 3/21/2017 | DRAWN BY: np

Silver Street  
3D VIEW

R5

FOR KIDS  
AGES  
5-12



STRUCTURE#: Play  
PROJECT#:  
DATE: 3/21/2017 | DRAWN BY: Njp

**EXHIBIT** Ap 48  
**Play Structure**  
Playcraft R5

DRAWING TITLE

DATE:  
05/24/2017

SCALE:  
NTS

DRAWING NO:  
Ne -21g

PROJECT ARCHITECTS

**FILBERT VILLAS**

37249 & 37257 FILBERT ST., NEWARK, CA 94560

DEVELOPER/ OWNER

**SRAJ Development Inc.**

ARCHITECTS

**BKBC ARCHITECTS INC.**

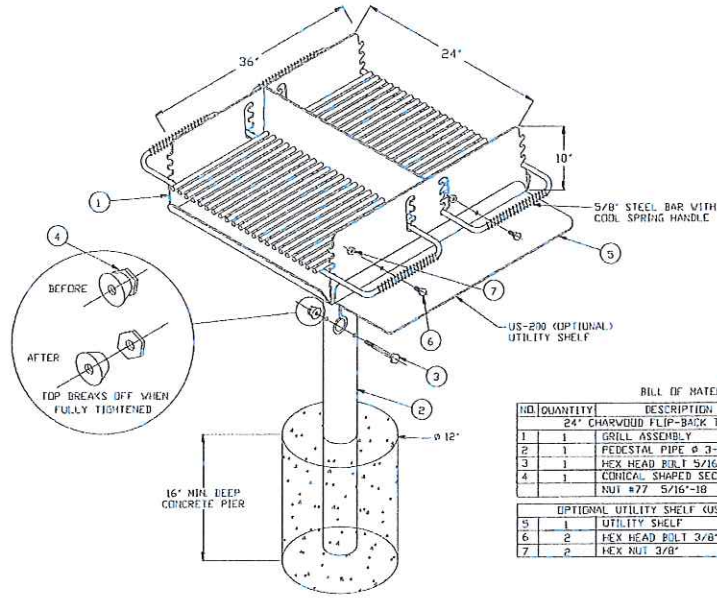
1371 OAKLAND BLVD, SUITE 101

WALNUT CREEK, CA 94596

925.930.9700

www.bbcbcaarch.com

ALL IDEAS, DESIGN, ARRANGEMENTS AND PLANS INDICATED OR REPRESENTED BY THESE DRAWINGS ARE OWNED BY AND THE PROPERTY OF BKBC ARCHITECTS INC. AND THESE PROJECTS, REVISED AND REDESIGNED FOR USE BY ANY OTHER ARCHITECTS WITH THIS PROJECT. NO ONE OF SUCH IDEAS, DESIGN, ARRANGEMENTS, OR PLANS SHALL BE USED BY, OR DISCLOSED TO ANY PERSON, FIRM, OR CORPORATION FOR ANY PURPOSE WHATSOEVER WITHOUT THE WRITTEN PERMISSION OF BKBC ARCHITECTS INC. FILING THESE DRAWINGS OR SPECIFICATIONS WITH ANY PUBLIC AGENCY IS NOT A PUBLICATION OF SAME. NO COPYING, REPRODUCTION OR USE THEREOF IS PERMISSIBLE WITHOUT THE CONSENT OF BKBC ARCHITECTS INC.



BILL OF MATERIAL

NO	QUANTITY	DESCRIPTION	PART#
24" CHARWOOD FLIP-BACK TWIN CAMPS LOVE			
1	1	GRILL ASSEMBLY	CC-2436C
2	1	PEDESTAL PIPE Ø 3-1/2" X 45"	CV-100PH
3	1	HEX HEAD BOLT 5/16" X 4"	HD-B3104P
4	1	CONICAL SHAPED SECURITY NUT #77 5/16" X 18"	HD-NS3116P
OPTIONAL UTILITY SHELF (US-200)			
5	1	UTILITY SHELF	SP-0760120U
6	2	HEX HEAD BOLT 3/8" X 5/8"	HD-S33710P
7	2	1/4" X 3/8"	HD-N3713P



**EXHIBIT** Ap49

**BBQ Grill**  
Belson Outdoors CC-2436-HC

DRAWING TITLE

DATE: 05/24/2017

SCALE: NTS

DRAWING NO:

**Ne -21h**

PROJECT

**FILBERT VILLAS**

37249 & 37257 FILBERT ST., NEWARK, CA 94560

DEVELOPER/ OWNER

**SRAJ Development Inc.**

ARCHITECTS

**BKBC ARCHITECTS INC.**

1371 OAKLAND BLVD., SUITE 101

WALNUT CREEK, CA 94596

925.930.9700 www.bbcbarch.com