



LANAI • PLAN 1 • AGRARIAN • RIGHT ELEVATION

SCALE: 1/4" = 1'-0"



LANAI • PLAN 1 • AGRARIAN • REAR ELEVATION

SCALE: 1/4" = 1'-0"



LANAI • PLAN 1 • AGRARIAN • LEFT ELEVATION

SCALE: 1/4" = 1'-0"

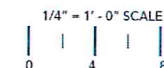


LANAI • PLAN 1 • AGRARIAN • FRONT ELEVATION

SCALE: 1/4" = 1'-0"

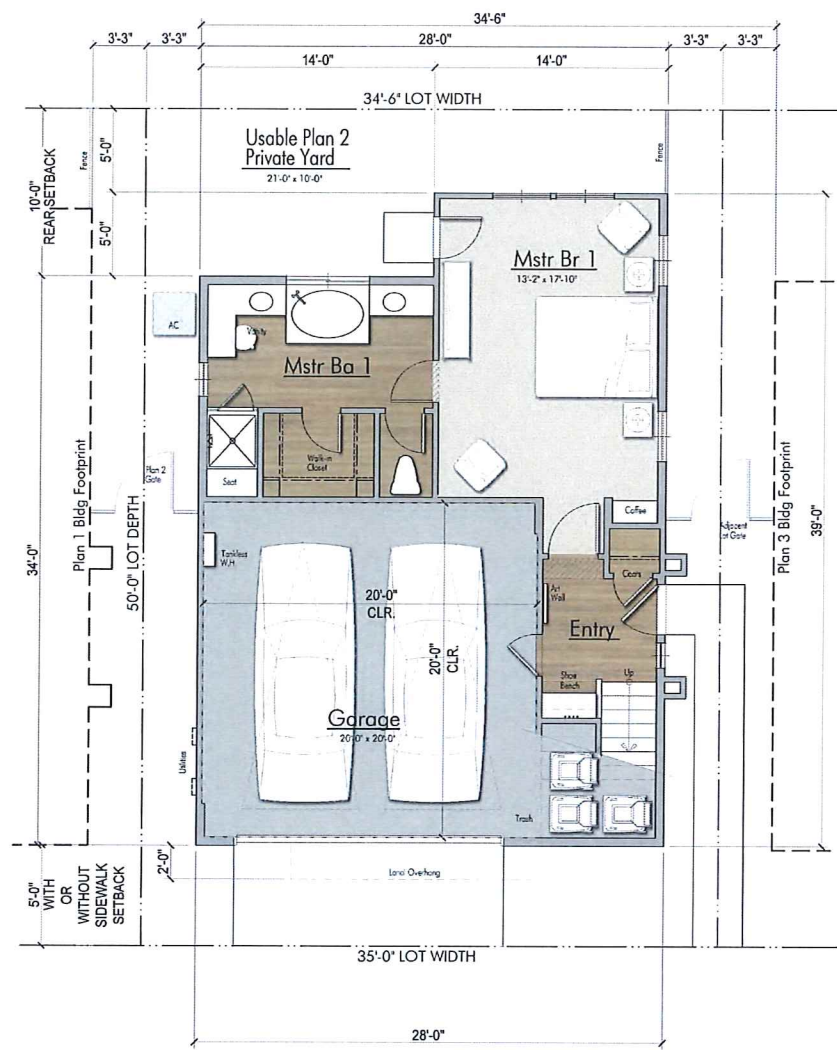
EXHIBIT Bp31

FMC "PARCEL C"
 NEWARK | CA
 INTEGRAL COMMUNITIES | 18-014
 DATE 8 | 16 | 18



UA LANAI PLAN 1 - AGRARIAN ELEVATIONS | A1.1C

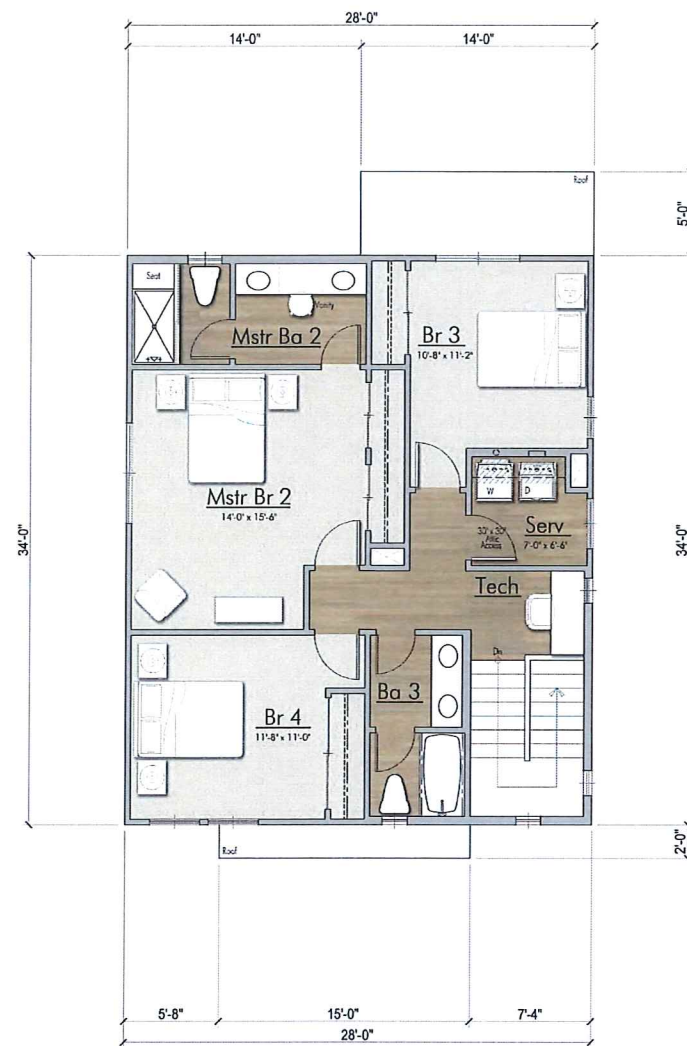




PLAN 2 • FIRST FLOOR
SCALE: 1/4" = 1'-0"



PLAN 2 • SECOND FLOOR
SCALE: 1/4" = 1'-0"



PLAN 2 • THIRD FLOOR
SCALE: 1/4" = 1'-0"

4 BEDROOM / 3 1/2 BATH
DUAL MASTER BEDROOMS

LANAI
PLAN 2
2,367 SF

• SQUARE FOOTAGE •

PLAN 2 • FIRST FLOOR	604 SQ. FT.
PLAN 2 • SECOND FLOOR	884 SQ. FT.
PLAN 2 • THIRD FLOOR	879 SQ. FT.
PLAN 2 • TOTAL	2,367 SQ. FT.
PLAN 2 • 2-CAR GARAGE	417 SQ. FT.
PLAN 2 • CALIFORNIA ROOM	168 SQ. FT.
PLAN 2 • TOTAL COVERED SQ. FT.	2,951 SQ. FT.

NOTE: SQUARE FOOTAGE MAY VARY DUE TO METHOD OF CALCULATION. SQUARE FOOTAGE INCLUDES EXTERIOR WALLS AND EXCLUDES VOIDS.



LANAI • PLAN 2 • FARMHOUSE • RIGHT ELEVATION

SCALE: 1/4" = 1'-0"



LANAI • PLAN 2 • FARMHOUSE • REAR ELEVATION

SCALE: 1/4" = 1'-0"



LANAI • PLAN 2 • FARMHOUSE • LEFT ELEVATION

SCALE: 1/4" = 1'-0"

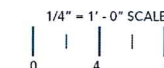


LANAI • PLAN 2 • FARMHOUSE • FRONT ELEVATION

SCALE: 1/4" = 1'-0"

EXHIBIT Bp33

FMC "PARCEL C"
 NEWARK | CA
 INTEGRAL COMMUNITIES | 18-014
 DATE 8 | 16 | 18



UA LANAI PLAN 2 - FARMHOUSE ELEVATIONS | A2.1A





LANAI • PLAN 2 • CRAFTSMAN • RIGHT ELEVATION

SCALE: 1/4" = 1'-0"



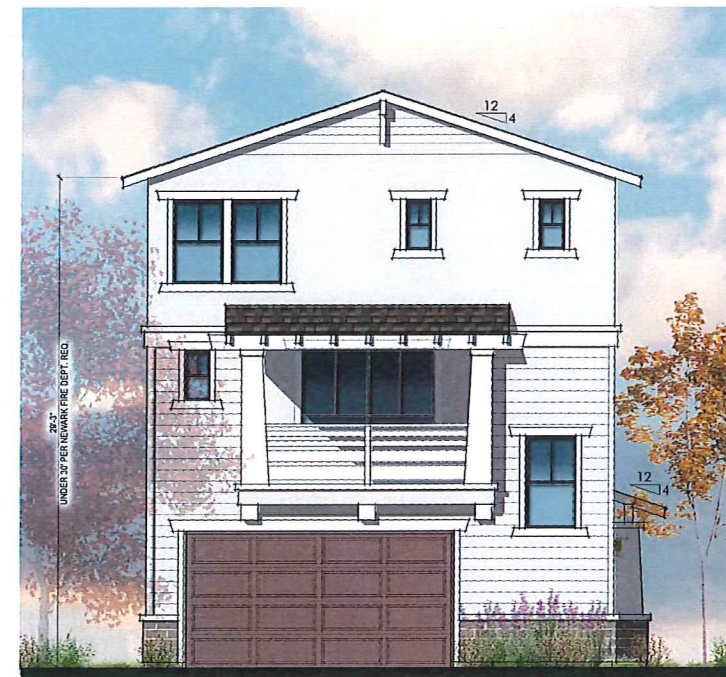
LANAI • PLAN 2 • CRAFTSMAN • REAR ELEVATION

SCALE: 1/4" = 1'-0"



LANAI • PLAN 2 • CRAFTSMAN • LEFT ELEVATION

SCALE: 1/4" = 1'-0"



LANAI • PLAN 2 • CRAFTSMAN • FRONT ELEVATION

SCALE: 1/4" = 1'-0"

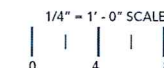
EXHIBIT Bp34

FMC "PARCEL C"

NEWARK | CA

INTEGRAL COMMUNITIES | 18-014

DATE 8 | 16 | 18





LANAI • PLAN 2 • AGRARIAN • RIGHT ELEVATION

SCALE: 1/4" = 1'-0"



LANAI • PLAN 2 • AGRARIAN • REAR ELEVATION

SCALE: 1/4" = 1'-0"



LANAI • PLAN 2 • AGRARIAN • LEFT ELEVATION

SCALE: 1/4" = 1'-0"



LANAI • PLAN 2 • AGRARIAN • FRONT ELEVATION

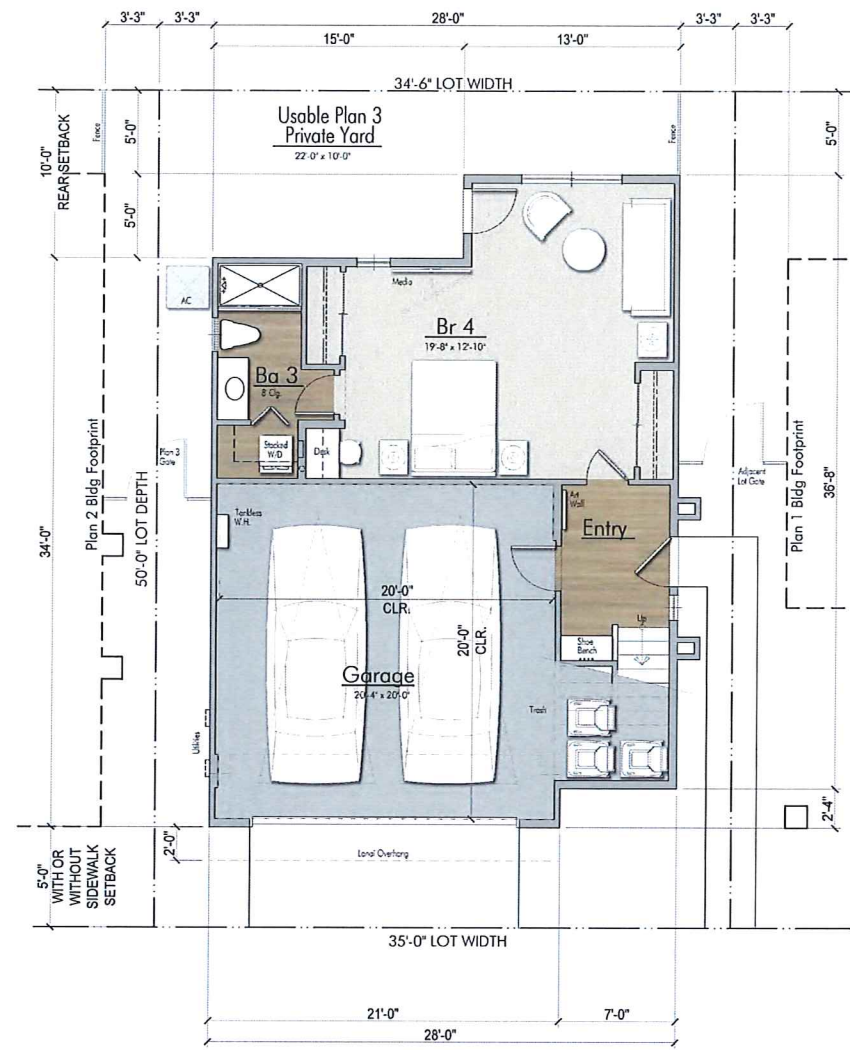
SCALE: 1/4" = 1'-0"

EXHIBIT *Bp35*

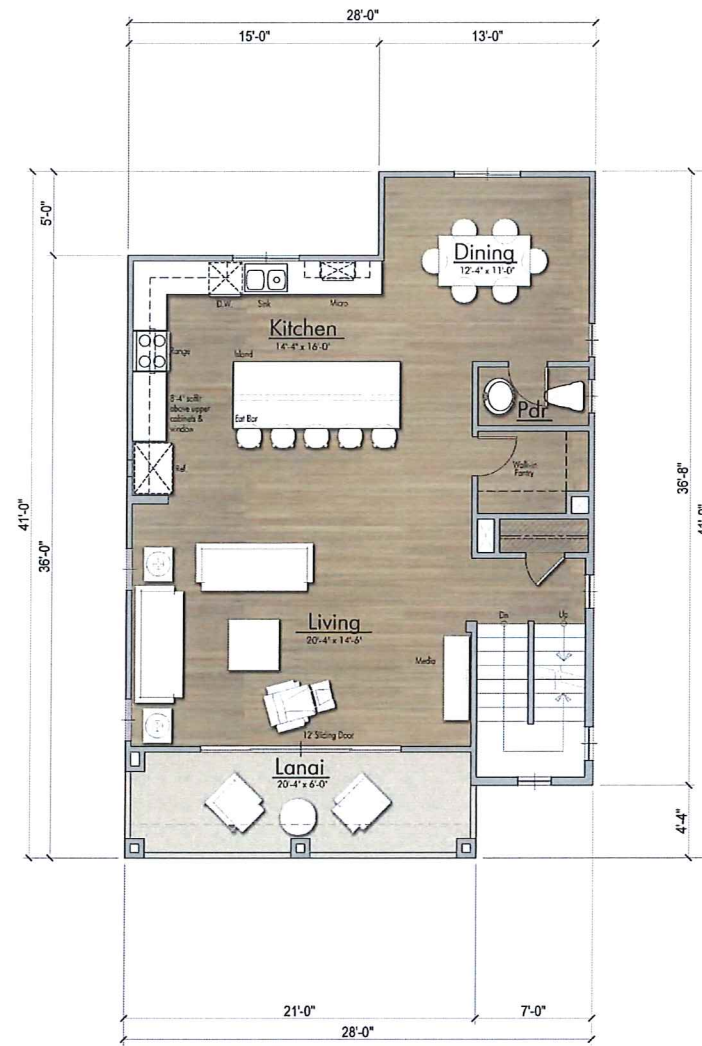
FMC "PARCEL C"
 NEWARK | CA
 INTEGRAL COMMUNITIES | 18-014
 DATE 8|16|18

1/4" = 1'-0" SCALE
 0 4 8

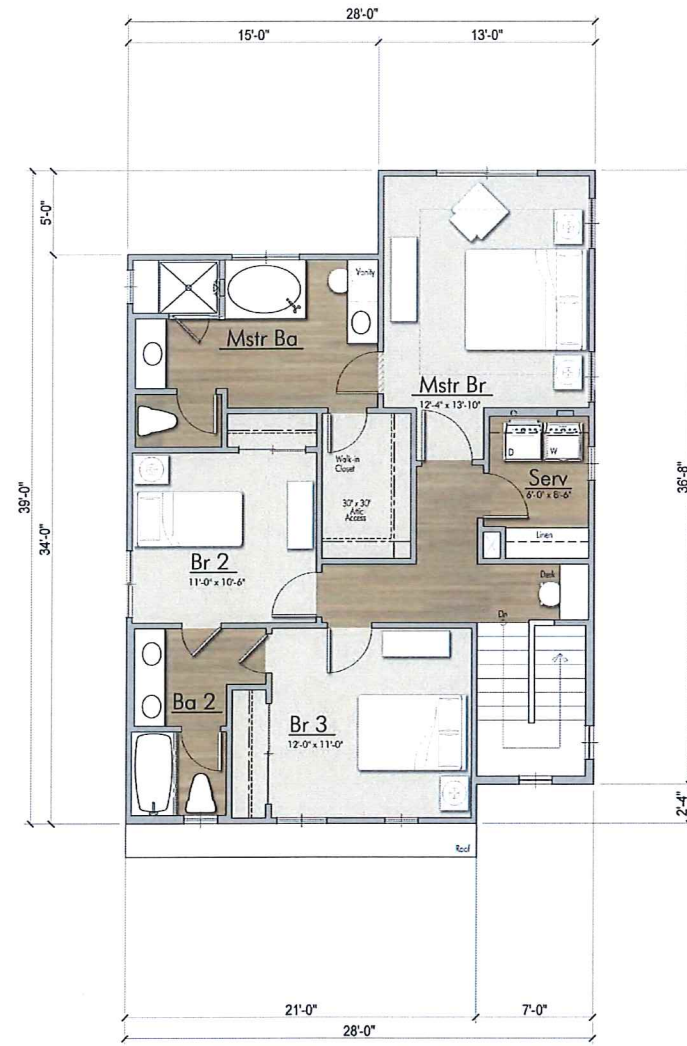




PLAN 3 • FIRST FLOOR
SCALE: 1/4" = 1'-0"



PLAN 3 • SECOND FLOOR
SCALE: 1/4" = 1'-0"



PLAN 3 • THIRD FLOOR
SCALE: 1/4" = 1'-0"

4 BEDROOMS / 3 1/2 BATH
NEXT GEN SUITE

LANAI
PLAN 3
2,418 SF

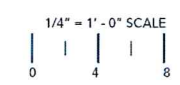
• SQUARE FOOTAGE •

PLAN 3 • FIRST FLOOR	576 SQ. FT.
PLAN 3 • SECOND FLOOR	910 SQ. FT.
PLAN 3 • THIRD FLOOR	932 SQ. FT.
PLAN 3 • TOTAL	2,418 SQ. FT.
PLAN 3 • 2-CAR GARAGE	424 SQ. FT.
PLAN 3 • DECK	133 SQ. FT.
PLAN 3 • TOTAL COVERED SQ. FT.	2,975 SQ. FT.

NOTE: SQUARE FOOTAGE MAY VARY DUE TO METHOD OF CALCULATION. SQUARE FOOTAGE INCLUDES EXTERIOR WALLS AND EXCLUDES VOIDS.

FMC "PARCEL C"
NEWARK | CA
INTEGRAL COMMUNITIES | 18-014
DATE 8 | 16 | 18

EXHIBIT Bp36



UA LANAI FLOOR PLAN 3 | A3.0





LANAI • PLAN 3 • FARMHOUSE • RIGHT ELEVATION

SCALE: 1/4" = 1'-0"



LANAI • PLAN 3 • FARMHOUSE • REAR ELEVATION

SCALE: 1/4" = 1'-0"



LANAI • PLAN 3 • FARMHOUSE • LEFT ELEVATION

SCALE: 1/4" = 1'-0"



LANAI • PLAN 3 • FARMHOUSE • FRONT ELEVATION

SCALE: 1/4" = 1'-0"

EXHIBIT Bp37

FMC "PARCEL C"

NEWARK | CA

INTEGRAL COMMUNITIES | 18-014

DATE 8 | 16 | 18

1/4" = 1'-0" SCALE
0 4 8





LANAI • PLAN 3 • CRAFTSMAN • RIGHT ELEVATION

SCALE: 1/4" = 1'-0"



LANAI • PLAN 3 • CRAFTSMAN • REAR ELEVATION

SCALE: 1/4" = 1'-0"



LANAI • PLAN 3 • CRAFTSMAN • LEFT ELEVATION

SCALE: 1/4" = 1'-0"



LANAI • PLAN 3 • CRAFTSMAN • FRONT ELEVATION

SCALE: 1/4" = 1'-0"

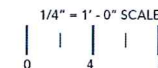
EXHIBIT Bp38

FMC "PARCEL C"

NEWARK | CA

INTEGRAL COMMUNITIES | 18-014

DATE 8|16|18



UA LANAI PLAN 3 - CRAFTSMAN ELEVATIONS | A3.1B





LANAI • PLAN 3 • AGRARIAN • RIGHT ELEVATION

SCALE: 1/4" = 1'-0"



LANAI • PLAN 3 • AGRARIAN • REAR ELEVATION

SCALE: 1/4" = 1'-0"



LANAI • PLAN 3 • AGRARIAN • LEFT ELEVATION

SCALE: 1/4" = 1'-0"



LANAI • PLAN 3 • AGRARIAN • FRONT ELEVATION

SCALE: 1/4" = 1'-0"

EXHIBIT Bp39

FMC "PARCEL C"

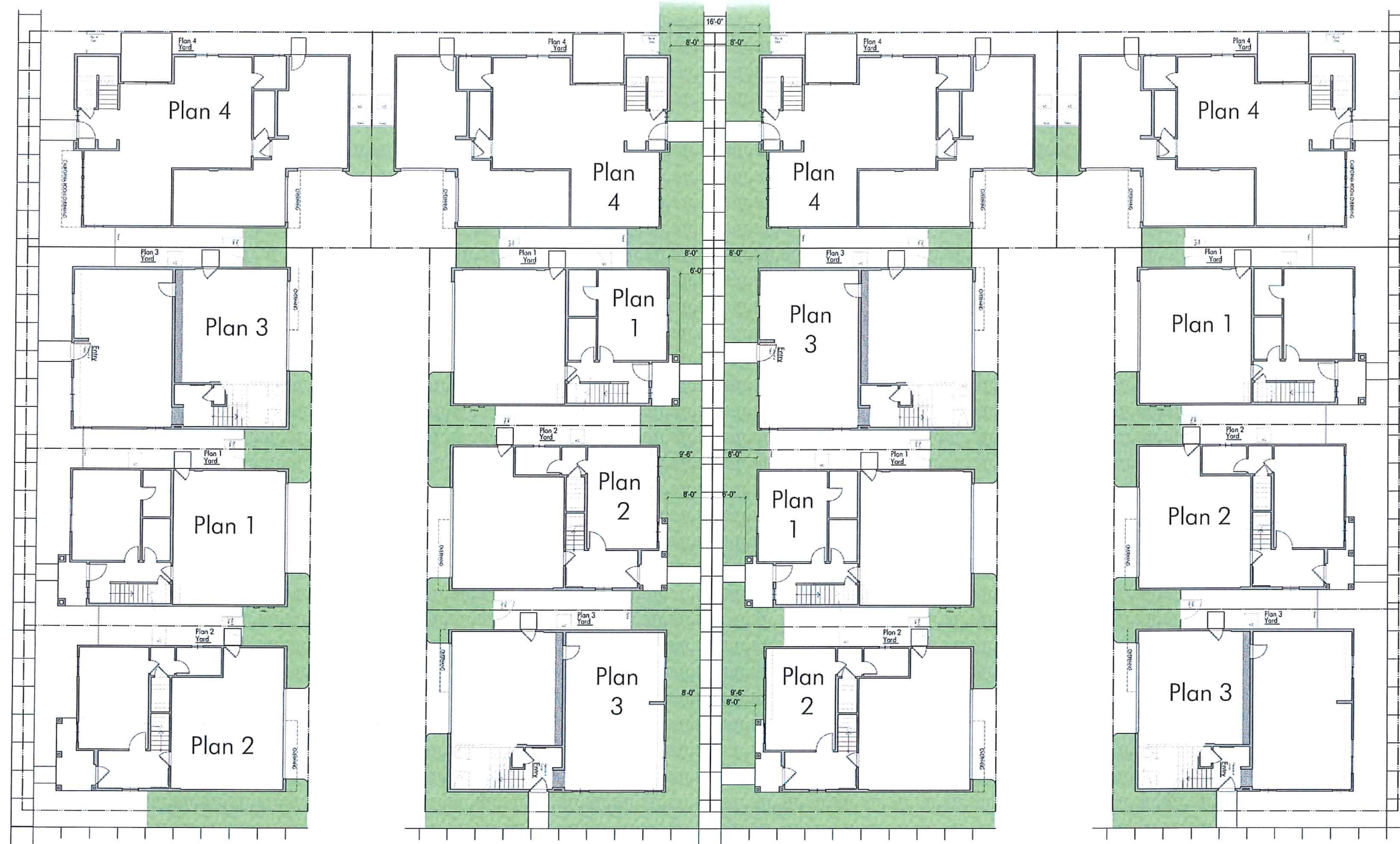
NEWARK | CA

INTEGRAL COMMUNITIES | 18-014

DATE 8 | 16 | 18

1/4" = 1'-0" SCALE
0 4 8





BUNGALOW • COMPOSITE LAYOUT
SCALE: 1/8" = 1'-0"

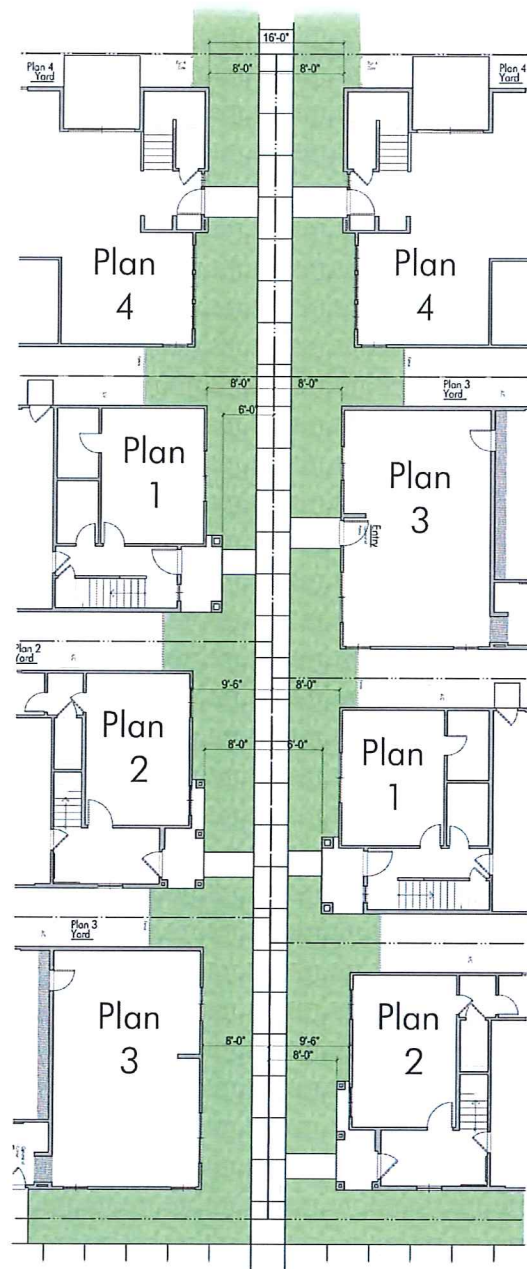
FMC "PARCEL C"
 NEWARK | CALIFORNIA
 INTEGRAL COMMUNITIES | 18-014
 DATE 8 | 16 | 18

EXHIBIT *Bp40*

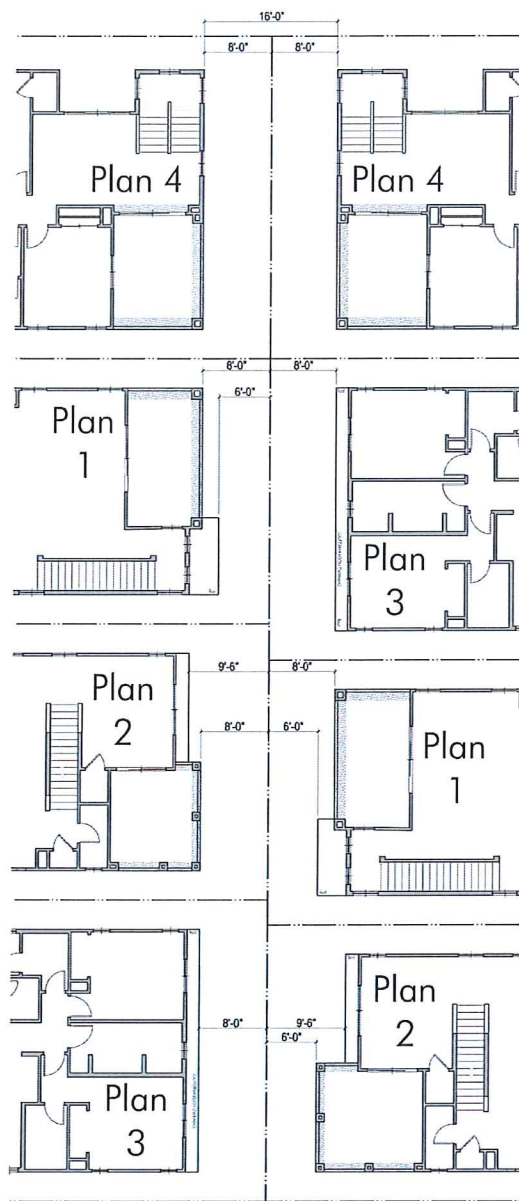
1/8" = 1'-0" SCALE
 0 8 16



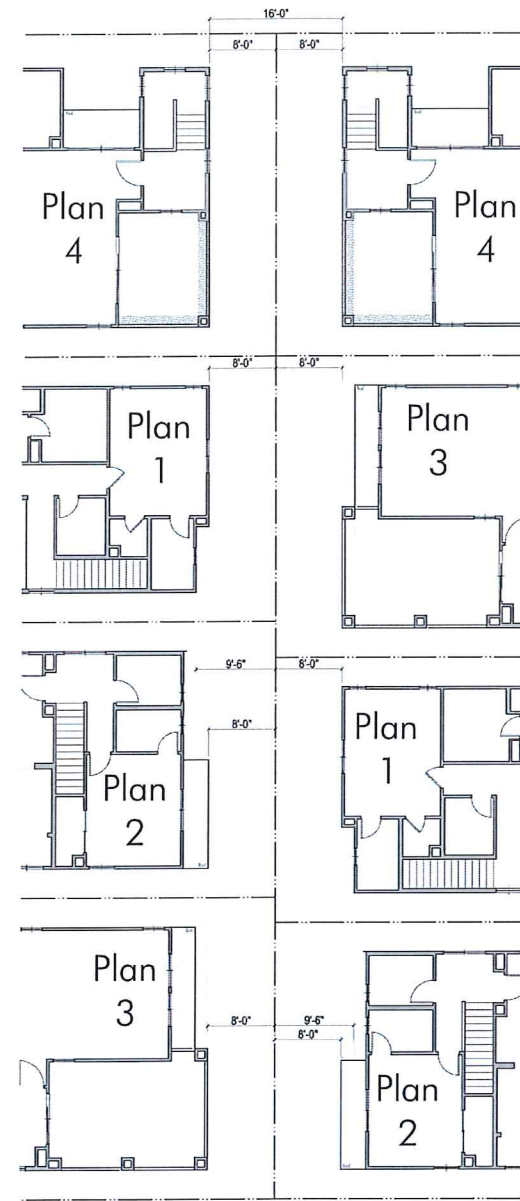
UA BUNGALOW COMPOSITE PLAN | A4.0



BUNGALOW • COMPOSITE LAYOUT • GROUND FLOOR
SCALE: 1/8" = 1'-0"



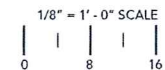
BUNGALOW • COMPOSITE LAYOUT • SECOND FLOOR
SCALE: 1/8" = 1'-0"

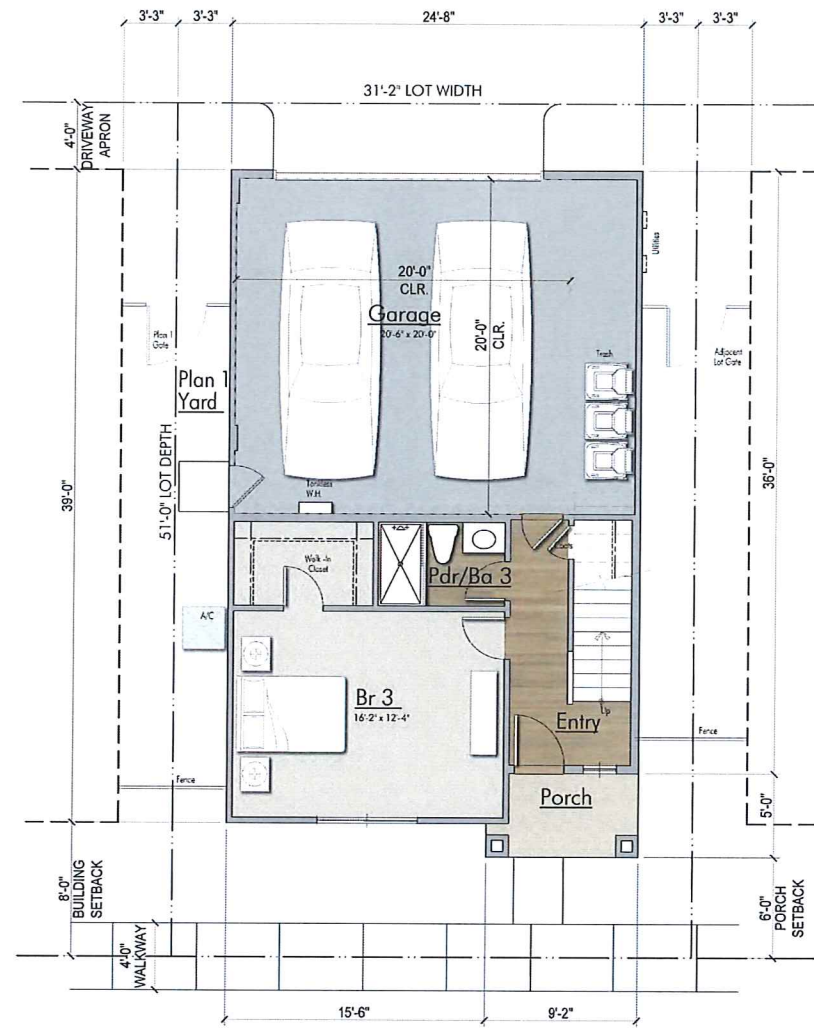


BUNGALOW • COMPOSITE LAYOUT • THIRD FLOOR
SCALE: 1/8" = 1'-0"

FMC "PARCEL C"
 NEWARK | CALIFORNIA
 INTEGRAL COMMUNITIES | 18-014
 DATE 8 | 16 | 18

EXHIBIT Bp41





PLAN 1 • FIRST FLOOR
SCALE: 1/4" = 1'-0"



PLAN 1 • SECOND FLOOR
SCALE: 1/4" = 1'-0"



PLAN 1 • THIRD FLOOR
SCALE: 1/4" = 1'-0"

3 BEDROOMS / 3 BATH
CALIFORNIA ROOM

**BUNGALOW
PLAN 1
2,136 SF**

• SQUARE FOOTAGE •

PLAN 2 • FIRST FLOOR	433 SQ. FT.
PLAN 2 • SECOND FLOOR	798 SQ. FT.
PLAN 2 • THIRD FLOOR	904 SQ. FT.
PLAN 2 • TOTAL	2,136 SQ. FT.

PLAN 2 • 2-CAR GARAGE	506 SQ. FT.
PLAN 2 • COVERED PORCH	42 SQ. FT.
PLAN 2 • CALIFORNIA ROOM # 1	149 SQ. FT.

PLAN 2 • TOTAL COVERED SQ. FT. 2,832 SQ. FT.
NOTE: SQUARE FOOTAGE MAY VARY DUE TO METHOD OF CALCULATION. SQUARE FOOTAGE INCLUDES EXTERIOR WALLS AND ROOF OVERHANGS.

FMC "PARCEL C"
NEWARK | CALIFORNIA
INTEGRAL COMMUNITIES | 18-014
DATE 8|16|18

EXHIBIT *Bp42* 1/4" = 1'-0" SCALE
0 1 2 3 4 5 6 7 8

UA BUNGALOW FLOOR PLAN 1 | A5.0





BUNGALOW • PLAN 1 • FARMHOUSE • RIGHT ELEVATION

SCALE: 1/4" = 1'-0"



BUNGALOW • PLAN 1 • FARMHOUSE • REAR ELEVATION

SCALE: 1/4" = 1'-0"



BUNGALOW • PLAN 1 • FARMHOUSE • LEFT ELEVATION

SCALE: 1/4" = 1'-0"



BUNGALOW • PLAN 1 • FARMHOUSE • FRONT ELEVATION

SCALE: 1/4" = 1'-0"

FMC "PARCEL C"
 NEWARK | CALIFORNIA
 INTEGRAL COMMUNITIES | 18-014
 DATE 8 | 16 | 18

EXHIBIT Bp43

1/4" = 1'-0" SCALE
 0 4 8

UA BUNGALOW PLAN 1 - FARMHOUSE ELEVATIONS | A5.1A





BUNGALOW • PLAN 1 • CRAFTSMAN • RIGHT ELEVATION

SCALE: 1/4" = 1'-0"



BUNGALOW • PLAN 1 • CRAFTSMAN • REAR ELEVATION

SCALE: 1/4" = 1'-0"



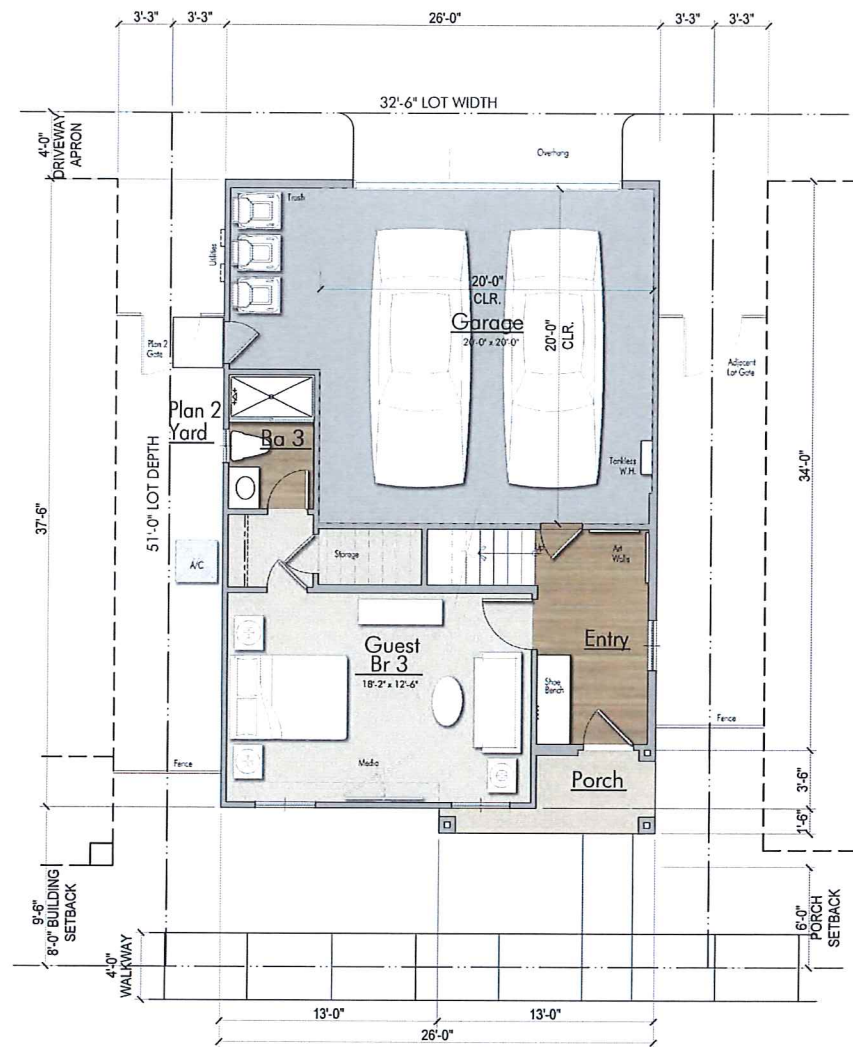
BUNGALOW • PLAN 1 • CRAFTSMAN • LEFT ELEVATION

SCALE: 1/4" = 1'-0"



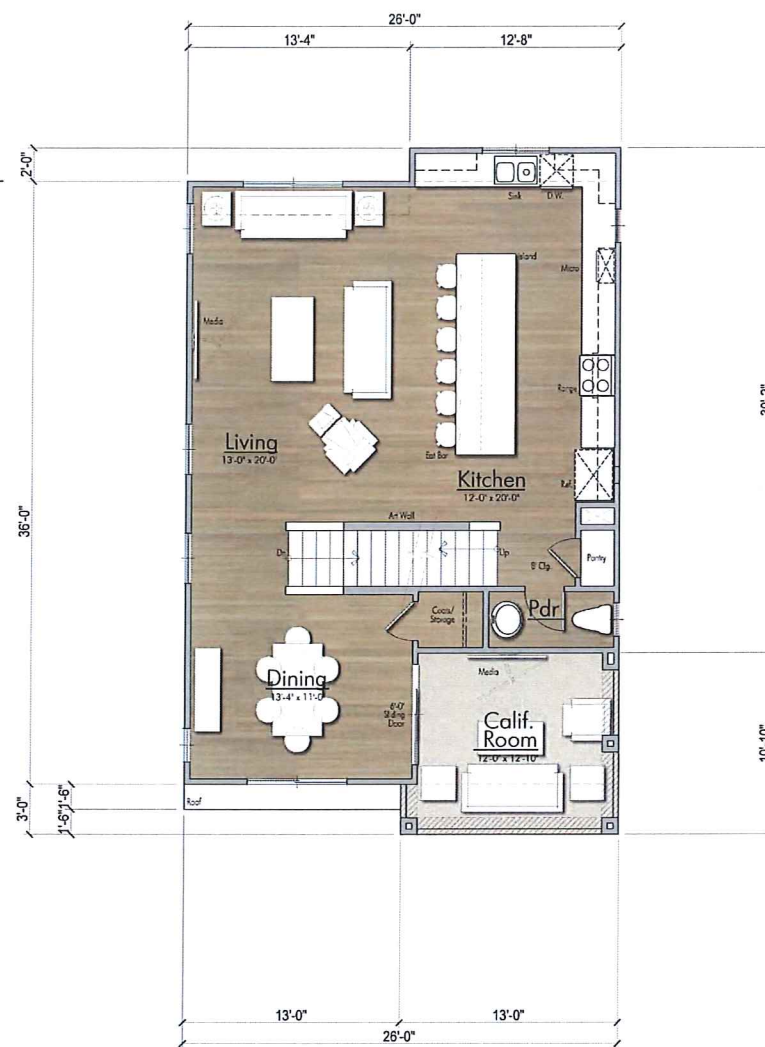
BUNGALOW • PLAN 1 • CRAFTSMAN • FRONT ELEVATION

SCALE: 1/4" = 1'-0"



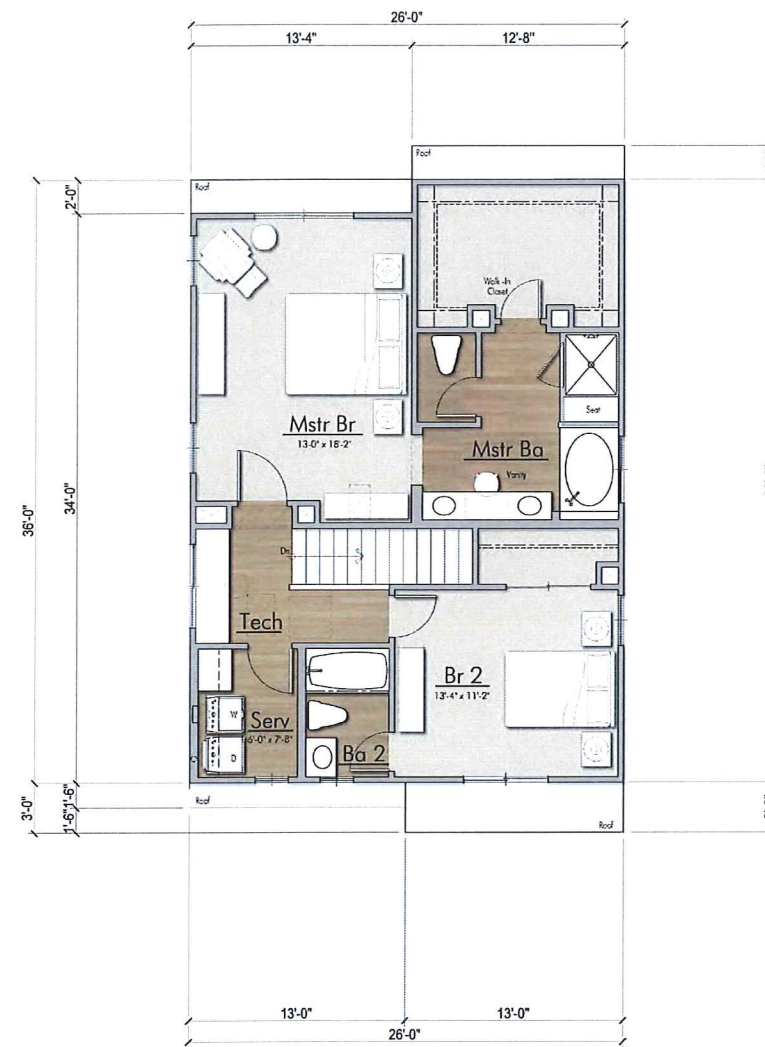
PLAN 2 • FIRST FLOOR

SCALE: 1/4" = 1'-0"



PLAN 2 • SECOND FLOOR

SCALE: 1/4" = 1'-0"



PLAN 2 • THIRD FLOOR

SCALE: 1/4" = 1'-0"

3 BEDROOMS / 3 BATH
CALIFORNIA ROOM

BUNGALOW
PLAN 2
2,201 SF

• SQUARE FOOTAGE •

PLAN 1 • FIRST FLOOR	470 SQ. FT.
PLAN 1 • SECOND FLOOR	834 SQ. FT.
PLAN 1 • THIRD FLOOR	866 SQ. FT.
PLAN 1 • TOTAL	2,201 SQ. FT.

PLAN 1 • 2-CAR GARAGE	481 SQ. FT.
PLAN 1 • COVERED PORCH	43 SQ. FT.
PLAN 1 • CALIFORNIA ROOM	134 SQ. FT.

PLAN 1 • TOTAL COVERED SQ. FT. 2,859 SQ. FT.

NOTE: SQUARE FOOTAGE MAY VARY DUE TO METHOD OF CALCULATION. SQUARE FOOTAGE INCLUDES EXTERIOR WALLS AND EXCLUDES VOIDS.

FMC "PARCEL C"
NEWARK | CALIFORNIA
INTEGRAL COMMUNITIES | 18-014
DATE 8 | 16 | 18

EXHIBIT *Bp45* 1/4" = 1'-0" SCALE
0 4 8

UA BUNGALOW FLOOR PLAN 2 | A6.0

