





APR 574-0852-002-147  
 TOTAL: 9486 - 300CEWAY  
 LENNAIR

APR 574-0852-002-147  
 FUTURE ENTERPRISE DRIVE  
 BY OTHERS

APR 574-0852-002-147  
 PAC

RESULTANT  
 PARCEL A  
 NEW PROJECT  
 PROJECT: JENSEN, LLC  
 2015-302845

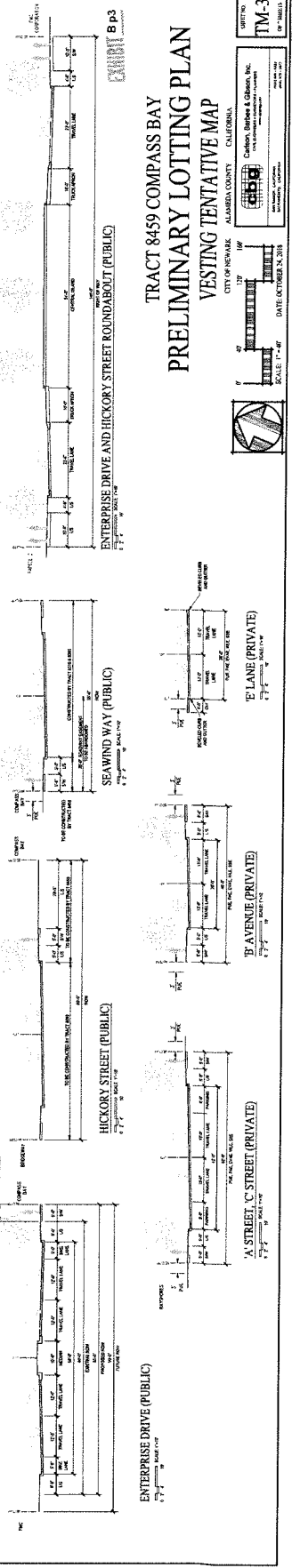
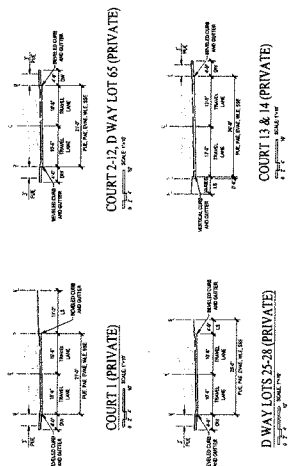
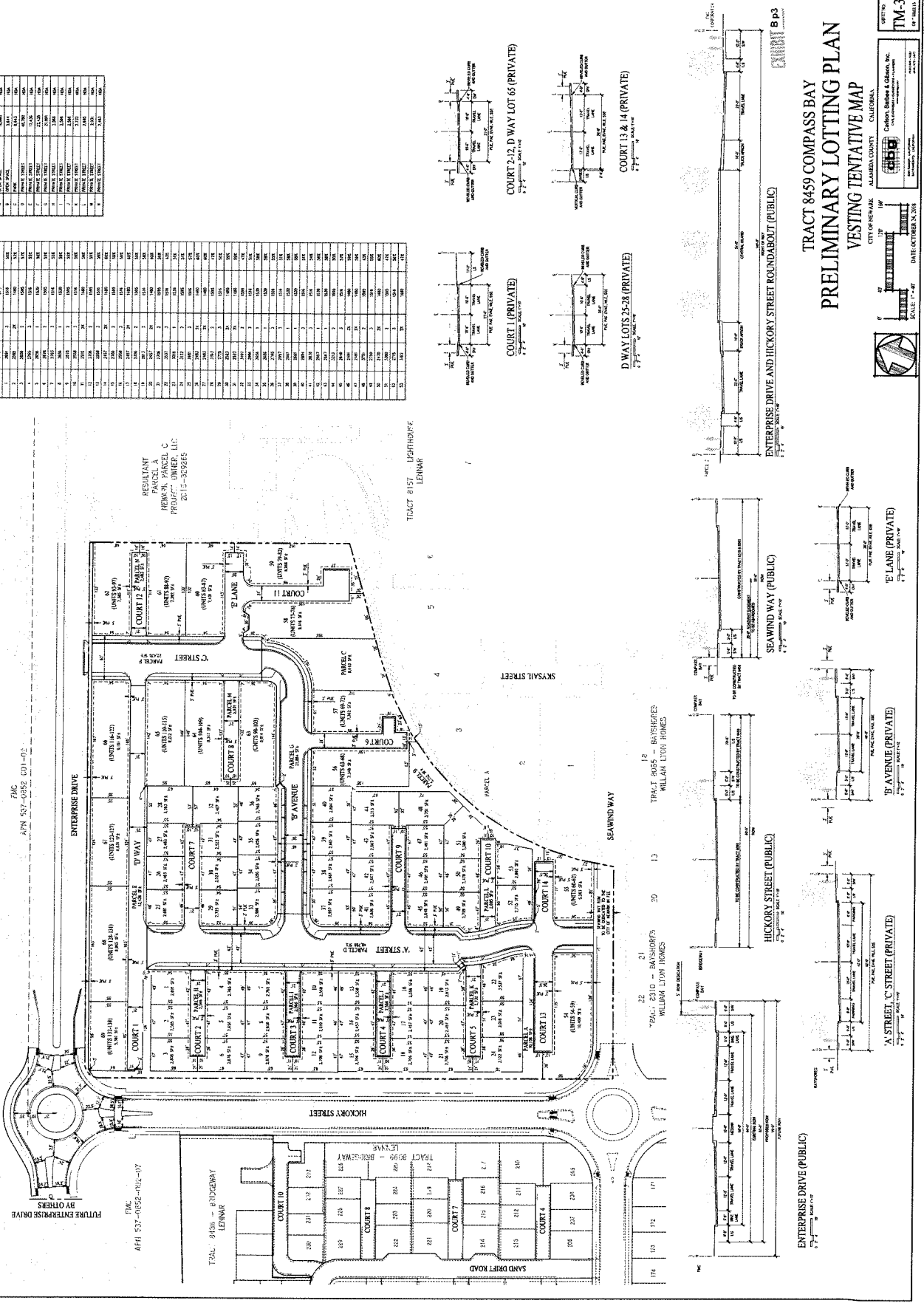
TRACT 8157 - LIGHTHOUSE  
 LENNAIR

TRACT 8310 - BAYSHORES  
 WILLIAM LYON HOMES

TRACT 8105 - BAYSHORES  
 WILLIAM LYON HOMES

PARCEL	DESCRIPTION	ACRES	OWNER
1	TRACT 8157	1.00	LENNAIR
2	TRACT 8105	1.00	LENNAIR
3	TRACT 8310	1.00	LENNAIR
4	TRACT 8105	1.00	LENNAIR
5	TRACT 8105	1.00	LENNAIR
6	TRACT 8105	1.00	LENNAIR
7	TRACT 8105	1.00	LENNAIR
8	TRACT 8105	1.00	LENNAIR
9	TRACT 8105	1.00	LENNAIR
10	TRACT 8105	1.00	LENNAIR
11	TRACT 8105	1.00	LENNAIR
12	TRACT 8105	1.00	LENNAIR
13	TRACT 8105	1.00	LENNAIR
14	TRACT 8105	1.00	LENNAIR
15	TRACT 8105	1.00	LENNAIR
16	TRACT 8105	1.00	LENNAIR
17	TRACT 8105	1.00	LENNAIR
18	TRACT 8105	1.00	LENNAIR
19	TRACT 8105	1.00	LENNAIR
20	TRACT 8105	1.00	LENNAIR
21	TRACT 8105	1.00	LENNAIR
22	TRACT 8105	1.00	LENNAIR
23	TRACT 8105	1.00	LENNAIR
24	TRACT 8105	1.00	LENNAIR
25	TRACT 8105	1.00	LENNAIR
26	TRACT 8105	1.00	LENNAIR
27	TRACT 8105	1.00	LENNAIR
28	TRACT 8105	1.00	LENNAIR
29	TRACT 8105	1.00	LENNAIR
30	TRACT 8105	1.00	LENNAIR
31	TRACT 8105	1.00	LENNAIR
32	TRACT 8105	1.00	LENNAIR
33	TRACT 8105	1.00	LENNAIR
34	TRACT 8105	1.00	LENNAIR
35	TRACT 8105	1.00	LENNAIR
36	TRACT 8105	1.00	LENNAIR
37	TRACT 8105	1.00	LENNAIR
38	TRACT 8105	1.00	LENNAIR
39	TRACT 8105	1.00	LENNAIR
40	TRACT 8105	1.00	LENNAIR
41	TRACT 8105	1.00	LENNAIR
42	TRACT 8105	1.00	LENNAIR
43	TRACT 8105	1.00	LENNAIR
44	TRACT 8105	1.00	LENNAIR
45	TRACT 8105	1.00	LENNAIR
46	TRACT 8105	1.00	LENNAIR
47	TRACT 8105	1.00	LENNAIR
48	TRACT 8105	1.00	LENNAIR
49	TRACT 8105	1.00	LENNAIR
50	TRACT 8105	1.00	LENNAIR
51	TRACT 8105	1.00	LENNAIR
52	TRACT 8105	1.00	LENNAIR
53	TRACT 8105	1.00	LENNAIR
54	TRACT 8105	1.00	LENNAIR
55	TRACT 8105	1.00	LENNAIR
56	TRACT 8105	1.00	LENNAIR
57	TRACT 8105	1.00	LENNAIR
58	TRACT 8105	1.00	LENNAIR
59	TRACT 8105	1.00	LENNAIR
60	TRACT 8105	1.00	LENNAIR
61	TRACT 8105	1.00	LENNAIR
62	TRACT 8105	1.00	LENNAIR
63	TRACT 8105	1.00	LENNAIR
64	TRACT 8105	1.00	LENNAIR
65	TRACT 8105	1.00	LENNAIR
66	TRACT 8105	1.00	LENNAIR
67	TRACT 8105	1.00	LENNAIR
68	TRACT 8105	1.00	LENNAIR
69	TRACT 8105	1.00	LENNAIR
70	TRACT 8105	1.00	LENNAIR
71	TRACT 8105	1.00	LENNAIR
72	TRACT 8105	1.00	LENNAIR
73	TRACT 8105	1.00	LENNAIR
74	TRACT 8105	1.00	LENNAIR
75	TRACT 8105	1.00	LENNAIR
76	TRACT 8105	1.00	LENNAIR
77	TRACT 8105	1.00	LENNAIR
78	TRACT 8105	1.00	LENNAIR
79	TRACT 8105	1.00	LENNAIR
80	TRACT 8105	1.00	LENNAIR
81	TRACT 8105	1.00	LENNAIR
82	TRACT 8105	1.00	LENNAIR
83	TRACT 8105	1.00	LENNAIR
84	TRACT 8105	1.00	LENNAIR
85	TRACT 8105	1.00	LENNAIR
86	TRACT 8105	1.00	LENNAIR
87	TRACT 8105	1.00	LENNAIR
88	TRACT 8105	1.00	LENNAIR
89	TRACT 8105	1.00	LENNAIR
90	TRACT 8105	1.00	LENNAIR
91	TRACT 8105	1.00	LENNAIR
92	TRACT 8105	1.00	LENNAIR
93	TRACT 8105	1.00	LENNAIR
94	TRACT 8105	1.00	LENNAIR
95	TRACT 8105	1.00	LENNAIR
96	TRACT 8105	1.00	LENNAIR
97	TRACT 8105	1.00	LENNAIR
98	TRACT 8105	1.00	LENNAIR
99	TRACT 8105	1.00	LENNAIR
100	TRACT 8105	1.00	LENNAIR

LOT NUMBER	LOT AREA	MIN. COV.	MAX. COV.
1	1000	10%	15%
2	1000	10%	15%
3	1000	10%	15%
4	1000	10%	15%
5	1000	10%	15%
6	1000	10%	15%
7	1000	10%	15%
8	1000	10%	15%
9	1000	10%	15%
10	1000	10%	15%
11	1000	10%	15%
12	1000	10%	15%
13	1000	10%	15%
14	1000	10%	15%
15	1000	10%	15%
16	1000	10%	15%
17	1000	10%	15%
18	1000	10%	15%
19	1000	10%	15%
20	1000	10%	15%
21	1000	10%	15%
22	1000	10%	15%
23	1000	10%	15%
24	1000	10%	15%
25	1000	10%	15%
26	1000	10%	15%
27	1000	10%	15%
28	1000	10%	15%
29	1000	10%	15%
30	1000	10%	15%
31	1000	10%	15%
32	1000	10%	15%
33	1000	10%	15%
34	1000	10%	15%
35	1000	10%	15%
36	1000	10%	15%
37	1000	10%	15%
38	1000	10%	15%
39	1000	10%	15%
40	1000	10%	15%
41	1000	10%	15%
42	1000	10%	15%
43	1000	10%	15%
44	1000	10%	15%
45	1000	10%	15%
46	1000	10%	15%
47	1000	10%	15%
48	1000	10%	15%
49	1000	10%	15%
50	1000	10%	15%
51	1000	10%	15%
52	1000	10%	15%
53	1000	10%	15%
54	1000	10%	15%
55	1000	10%	15%
56	1000	10%	15%
57	1000	10%	15%
58	1000	10%	15%
59	1000	10%	15%
60	1000	10%	15%
61	1000	10%	15%
62	1000	10%	15%
63	1000	10%	15%
64	1000	10%	15%
65	1000	10%	15%
66	1000	10%	15%
67	1000	10%	15%
68	1000	10%	15%
69	1000	10%	15%
70	1000	10%	15%
71	1000	10%	15%
72	1000	10%	15%
73	1000	10%	15%
74	1000	10%	15%
75	1000	10%	15%
76	1000	10%	15%
77	1000	10%	15%
78	1000	10%	15%
79	1000	10%	15%
80	1000	10%	15%
81	1000	10%	15%
82	1000	10%	15%
83	1000	10%	15%
84	1000	10%	15%
85	1000	10%	15%
86	1000	10%	15%
87	1000	10%	15%
88	1000	10%	15%
89	1000	10%	15%
90	1000	10%	15%
91	1000	10%	15%
92	1000	10%	15%
93	1000	10%	15%
94	1000	10%	15%
95	1000	10%	15%
96	1000	10%	15%
97	1000	10%	15%
98	1000	10%	15%
99	1000	10%	15%
100	1000	10%	15%



TRACT 8459 COMPASS BAY  
 PRELIMINARY LOTTING PLAN  
 VESTING TENTATIVE MAP

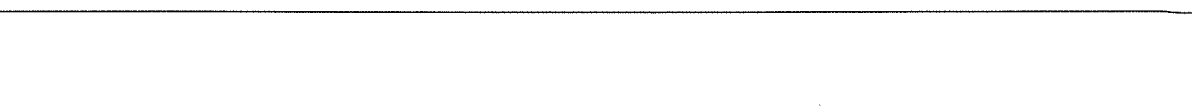
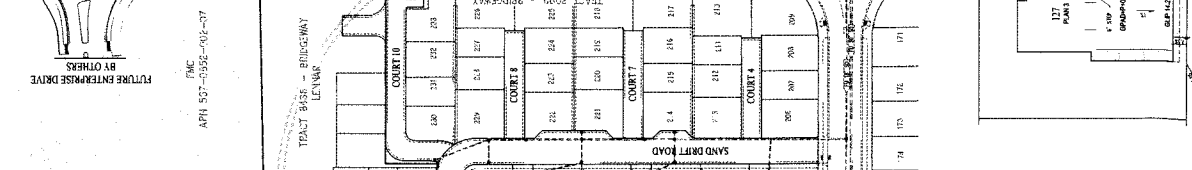
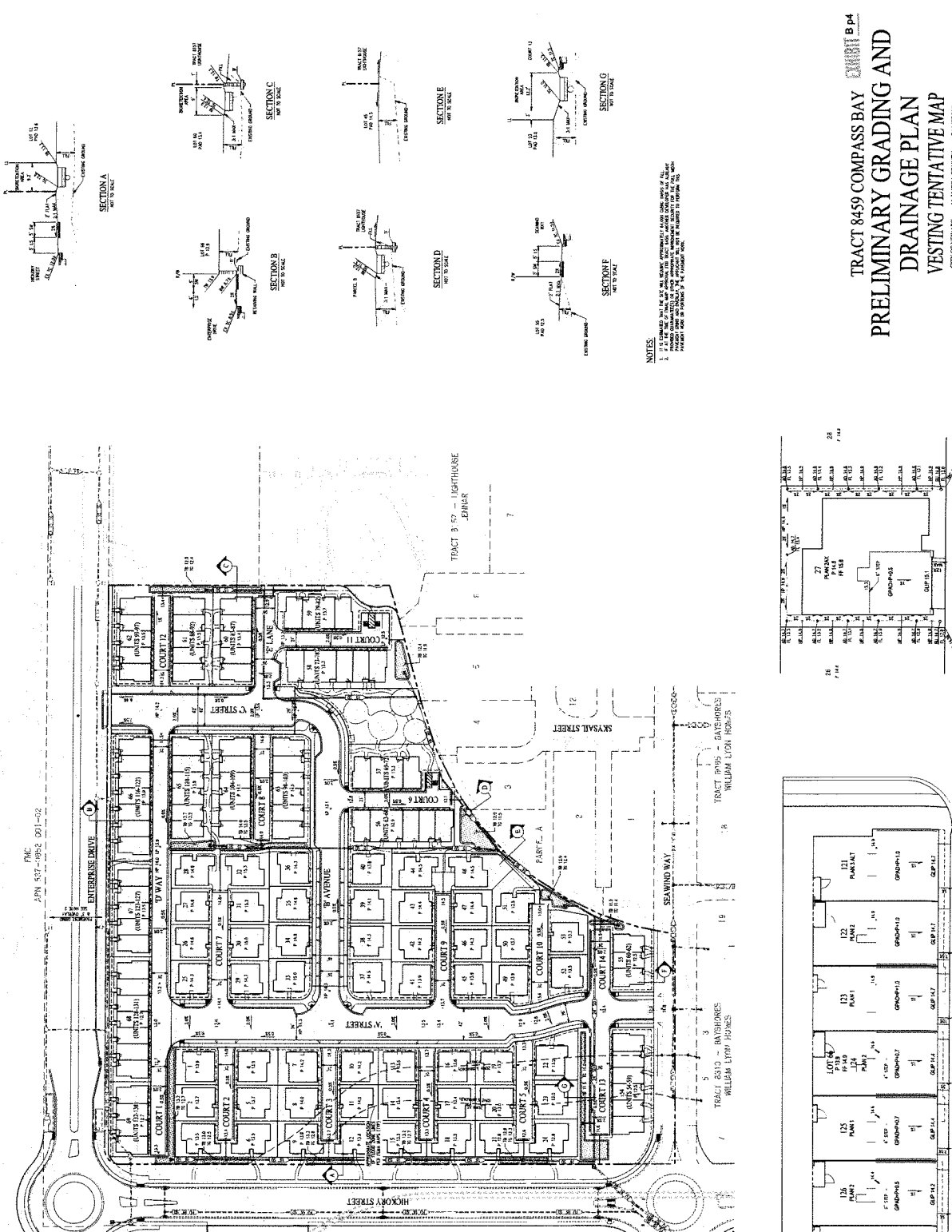
CITY OF NEWARK, ALAMEDA COUNTY, CALIFORNIA

DATE: OCTOBER 24, 2018

SCALE: 1" = 40'

DATE: OCTOBER 24, 2018

TM-3



**TRACT 8459 COMPASS BAY**  
**PRELIMINARY GRADING AND DRAINAGE PLAN**  
**VESTING TENTATIVE MAP**

CITY OF NEWARK  
 ALAMANDA COUNTY CALIFORNIA

DATE: OCTOBER 18, 2015  
 SCALE: 1" = 40'

CONTRACT NO. 15-001  
 PROJECT NO. 15-001

PREPARED BY: CHERRY BARRAS & CHERRY, INC.  
 10000 BAYVIEW AVENUE, SUITE 200  
 NEWARK, CALIFORNIA 94568  
 PHONE: (925) 461-1100  
 FAX: (925) 461-1101  
 WWW.CBCORP.COM

REGISTERED PROFESSIONAL ENGINEER  
 CIVIL ENGINEERING  
 LICENSE NO. 44898  
 STATE OF CALIFORNIA

REGISTERED PROFESSIONAL ENGINEER  
 CIVIL ENGINEERING  
 LICENSE NO. 44898  
 STATE OF CALIFORNIA

REGISTERED PROFESSIONAL ENGINEER  
 CIVIL ENGINEERING  
 LICENSE NO. 44898  
 STATE OF CALIFORNIA

REGISTERED PROFESSIONAL ENGINEER  
 CIVIL ENGINEERING  
 LICENSE NO. 44898  
 STATE OF CALIFORNIA

REGISTERED PROFESSIONAL ENGINEER  
 CIVIL ENGINEERING  
 LICENSE NO. 44898  
 STATE OF CALIFORNIA

REGISTERED PROFESSIONAL ENGINEER  
 CIVIL ENGINEERING  
 LICENSE NO. 44898  
 STATE OF CALIFORNIA

REGISTERED PROFESSIONAL ENGINEER  
 CIVIL ENGINEERING  
 LICENSE NO. 44898  
 STATE OF CALIFORNIA

REGISTERED PROFESSIONAL ENGINEER  
 CIVIL ENGINEERING  
 LICENSE NO. 44898  
 STATE OF CALIFORNIA

REGISTERED PROFESSIONAL ENGINEER  
 CIVIL ENGINEERING  
 LICENSE NO. 44898  
 STATE OF CALIFORNIA

REGISTERED PROFESSIONAL ENGINEER  
 CIVIL ENGINEERING  
 LICENSE NO. 44898  
 STATE OF CALIFORNIA

**NOTES:**

1. ALL DIMENSIONS SHALL BE AS SHOWN UNLESS OTHERWISE SPECIFIED. ALL DIMENSIONS SHALL BE TO FACE UNLESS OTHERWISE SPECIFIED.
2. ALL DIMENSIONS SHALL BE TO FACE UNLESS OTHERWISE SPECIFIED. ALL DIMENSIONS SHALL BE TO FACE UNLESS OTHERWISE SPECIFIED.
3. ALL DIMENSIONS SHALL BE TO FACE UNLESS OTHERWISE SPECIFIED. ALL DIMENSIONS SHALL BE TO FACE UNLESS OTHERWISE SPECIFIED.
4. ALL DIMENSIONS SHALL BE TO FACE UNLESS OTHERWISE SPECIFIED. ALL DIMENSIONS SHALL BE TO FACE UNLESS OTHERWISE SPECIFIED.
5. ALL DIMENSIONS SHALL BE TO FACE UNLESS OTHERWISE SPECIFIED. ALL DIMENSIONS SHALL BE TO FACE UNLESS OTHERWISE SPECIFIED.
6. ALL DIMENSIONS SHALL BE TO FACE UNLESS OTHERWISE SPECIFIED. ALL DIMENSIONS SHALL BE TO FACE UNLESS OTHERWISE SPECIFIED.
7. ALL DIMENSIONS SHALL BE TO FACE UNLESS OTHERWISE SPECIFIED. ALL DIMENSIONS SHALL BE TO FACE UNLESS OTHERWISE SPECIFIED.
8. ALL DIMENSIONS SHALL BE TO FACE UNLESS OTHERWISE SPECIFIED. ALL DIMENSIONS SHALL BE TO FACE UNLESS OTHERWISE SPECIFIED.
9. ALL DIMENSIONS SHALL BE TO FACE UNLESS OTHERWISE SPECIFIED. ALL DIMENSIONS SHALL BE TO FACE UNLESS OTHERWISE SPECIFIED.
10. ALL DIMENSIONS SHALL BE TO FACE UNLESS OTHERWISE SPECIFIED. ALL DIMENSIONS SHALL BE TO FACE UNLESS OTHERWISE SPECIFIED.

TRACT 2009 - BRICKMAY LENS  
 TRACT 2810 - BANISHORES WILLIAM LUSH HOMES  
 TRACT 2812 - BANISHORES WILLIAM LUSH HOMES  
 TRACT 2813 - BANISHORES WILLIAM LUSH HOMES  
 TRACT 2814 - BANISHORES WILLIAM LUSH HOMES  
 TRACT 2815 - BANISHORES WILLIAM LUSH HOMES  
 TRACT 2816 - BANISHORES WILLIAM LUSH HOMES  
 TRACT 2817 - BANISHORES WILLIAM LUSH HOMES  
 TRACT 2818 - BANISHORES WILLIAM LUSH HOMES  
 TRACT 2819 - BANISHORES WILLIAM LUSH HOMES  
 TRACT 2820 - BANISHORES WILLIAM LUSH HOMES  
 TRACT 2821 - BANISHORES WILLIAM LUSH HOMES  
 TRACT 2822 - BANISHORES WILLIAM LUSH HOMES  
 TRACT 2823 - BANISHORES WILLIAM LUSH HOMES  
 TRACT 2824 - BANISHORES WILLIAM LUSH HOMES  
 TRACT 2825 - BANISHORES WILLIAM LUSH HOMES  
 TRACT 2826 - BANISHORES WILLIAM LUSH HOMES  
 TRACT 2827 - BANISHORES WILLIAM LUSH HOMES  
 TRACT 2828 - BANISHORES WILLIAM LUSH HOMES  
 TRACT 2829 - BANISHORES WILLIAM LUSH HOMES  
 TRACT 2830 - BANISHORES WILLIAM LUSH HOMES  
 TRACT 2831 - BANISHORES WILLIAM LUSH HOMES  
 TRACT 2832 - BANISHORES WILLIAM LUSH HOMES  
 TRACT 2833 - BANISHORES WILLIAM LUSH HOMES  
 TRACT 2834 - BANISHORES WILLIAM LUSH HOMES  
 TRACT 2835 - BANISHORES WILLIAM LUSH HOMES  
 TRACT 2836 - BANISHORES WILLIAM LUSH HOMES  
 TRACT 2837 - BANISHORES WILLIAM LUSH HOMES  
 TRACT 2838 - BANISHORES WILLIAM LUSH HOMES  
 TRACT 2839 - BANISHORES WILLIAM LUSH HOMES  
 TRACT 2840 - BANISHORES WILLIAM LUSH HOMES  
 TRACT 2841 - BANISHORES WILLIAM LUSH HOMES  
 TRACT 2842 - BANISHORES WILLIAM LUSH HOMES  
 TRACT 2843 - BANISHORES WILLIAM LUSH HOMES  
 TRACT 2844 - BANISHORES WILLIAM LUSH HOMES  
 TRACT 2845 - BANISHORES WILLIAM LUSH HOMES  
 TRACT 2846 - BANISHORES WILLIAM LUSH HOMES  
 TRACT 2847 - BANISHORES WILLIAM LUSH HOMES  
 TRACT 2848 - BANISHORES WILLIAM LUSH HOMES  
 TRACT 2849 - BANISHORES WILLIAM LUSH HOMES  
 TRACT 2850 - BANISHORES WILLIAM LUSH HOMES  
 TRACT 2851 - BANISHORES WILLIAM LUSH HOMES  
 TRACT 2852 - BANISHORES WILLIAM LUSH HOMES  
 TRACT 2853 - BANISHORES WILLIAM LUSH HOMES  
 TRACT 2854 - BANISHORES WILLIAM LUSH HOMES  
 TRACT 2855 - BANISHORES WILLIAM LUSH HOMES  
 TRACT 2856 - BANISHORES WILLIAM LUSH HOMES  
 TRACT 2857 - BANISHORES WILLIAM LUSH HOMES  
 TRACT 2858 - BANISHORES WILLIAM LUSH HOMES  
 TRACT 2859 - BANISHORES WILLIAM LUSH HOMES  
 TRACT 2860 - BANISHORES WILLIAM LUSH HOMES  
 TRACT 2861 - BANISHORES WILLIAM LUSH HOMES  
 TRACT 2862 - BANISHORES WILLIAM LUSH HOMES  
 TRACT 2863 - BANISHORES WILLIAM LUSH HOMES  
 TRACT 2864 - BANISHORES WILLIAM LUSH HOMES  
 TRACT 2865 - BANISHORES WILLIAM LUSH HOMES  
 TRACT 2866 - BANISHORES WILLIAM LUSH HOMES  
 TRACT 2867 - BANISHORES WILLIAM LUSH HOMES  
 TRACT 2868 - BANISHORES WILLIAM LUSH HOMES  
 TRACT 2869 - BANISHORES WILLIAM LUSH HOMES  
 TRACT 2870 - BANISHORES WILLIAM LUSH HOMES  
 TRACT 2871 - BANISHORES WILLIAM LUSH HOMES  
 TRACT 2872 - BANISHORES WILLIAM LUSH HOMES  
 TRACT 2873 - BANISHORES WILLIAM LUSH HOMES  
 TRACT 2874 - BANISHORES WILLIAM LUSH HOMES  
 TRACT 2875 - BANISHORES WILLIAM LUSH HOMES  
 TRACT 2876 - BANISHORES WILLIAM LUSH HOMES  
 TRACT 2877 - BANISHORES WILLIAM LUSH HOMES  
 TRACT 2878 - BANISHORES WILLIAM LUSH HOMES  
 TRACT 2879 - BANISHORES WILLIAM LUSH HOMES  
 TRACT 2880 - BANISHORES WILLIAM LUSH HOMES  
 TRACT 2881 - BANISHORES WILLIAM LUSH HOMES  
 TRACT 2882 - BANISHORES WILLIAM LUSH HOMES  
 TRACT 2883 - BANISHORES WILLIAM LUSH HOMES  
 TRACT 2884 - BANISHORES WILLIAM LUSH HOMES  
 TRACT 2885 - BANISHORES WILLIAM LUSH HOMES  
 TRACT 2886 - BANISHORES WILLIAM LUSH HOMES  
 TRACT 2887 - BANISHORES WILLIAM LUSH HOMES  
 TRACT 2888 - BANISHORES WILLIAM LUSH HOMES  
 TRACT 2889 - BANISHORES WILLIAM LUSH HOMES  
 TRACT 2890 - BANISHORES WILLIAM LUSH HOMES  
 TRACT 2891 - BANISHORES WILLIAM LUSH HOMES  
 TRACT 2892 - BANISHORES WILLIAM LUSH HOMES  
 TRACT 2893 - BANISHORES WILLIAM LUSH HOMES  
 TRACT 2894 - BANISHORES WILLIAM LUSH HOMES  
 TRACT 2895 - BANISHORES WILLIAM LUSH HOMES  
 TRACT 2896 - BANISHORES WILLIAM LUSH HOMES  
 TRACT 2897 - BANISHORES WILLIAM LUSH HOMES  
 TRACT 2898 - BANISHORES WILLIAM LUSH HOMES  
 TRACT 2899 - BANISHORES WILLIAM LUSH HOMES  
 TRACT 2900 - BANISHORES WILLIAM LUSH HOMES

TRACT 3 57 - LIGHTHOUSE LEMAR

TRACT 2810 - BANISHORES WILLIAM LUSH HOMES

TRACT 2812 - BANISHORES WILLIAM LUSH HOMES

TRACT 2813 - BANISHORES WILLIAM LUSH HOMES

TRACT 2814 - BANISHORES WILLIAM LUSH HOMES

TRACT 2815 - BANISHORES WILLIAM LUSH HOMES

TRACT 2816 - BANISHORES WILLIAM LUSH HOMES

TRACT 2817 - BANISHORES WILLIAM LUSH HOMES

TRACT 2818 - BANISHORES WILLIAM LUSH HOMES

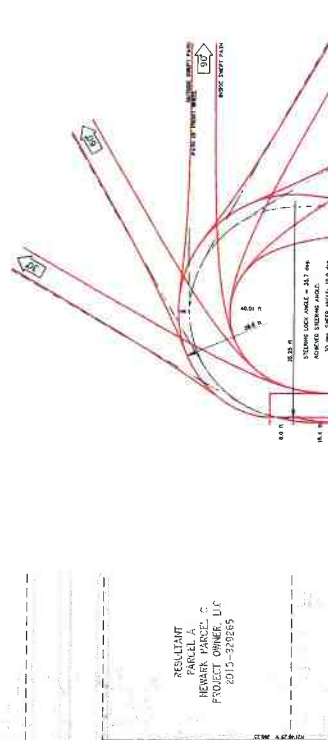
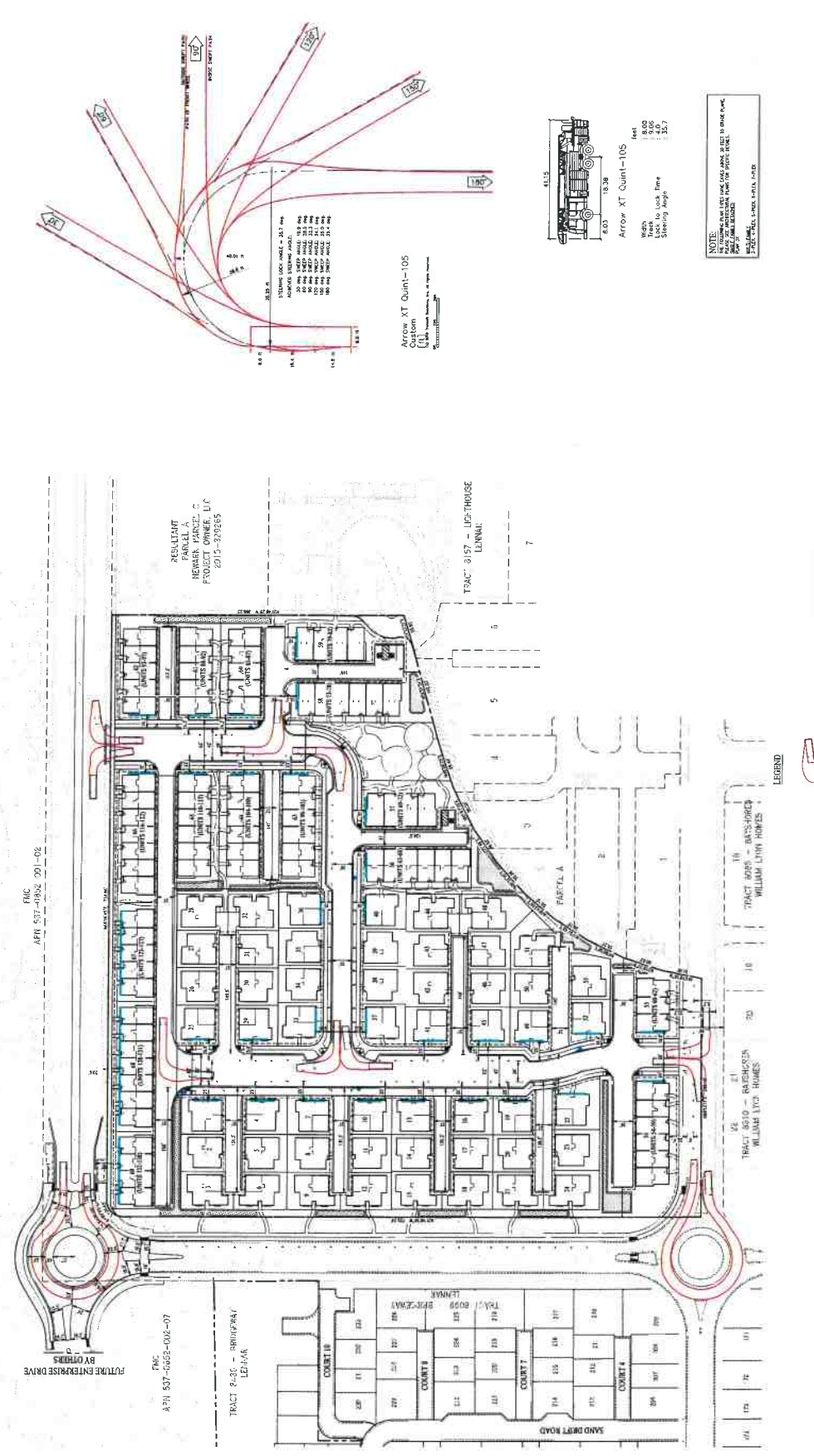
TRACT 2819 - BANISHORES WILLIAM LUSH HOMES

TRACT 2820 - BANISHORES WILLIAM LUSH HOMES

TRACT 2821 - BANISHORES WILLIAM LUSH HOMES

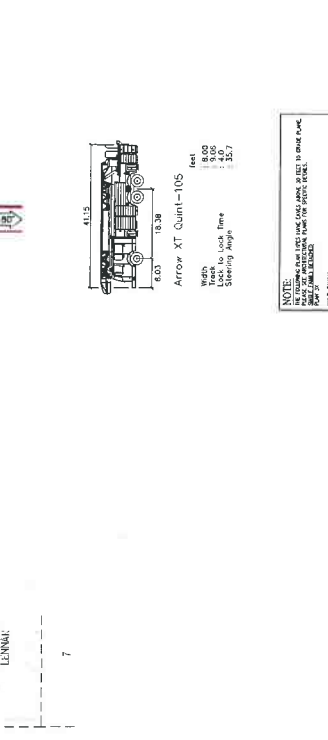






Arrow XT Quint-105  
Custom  
Lennar  
CITY OF NEWARK, CALIFORNIA

NOTE:  
THIS TRUCK IS A 2012 MODEL YEAR. THE MANUFACTURER'S SPECIFICATIONS MAY VARY FROM THE ABOVE LISTED SPECIFICATIONS. THE MANUFACTURER'S SPECIFICATIONS SHOULD BE USED FOR THE MOST ACCURATE INFORMATION.



**EXHIBIT B P7**

**TRACT 8459 COMPASS BAY  
FIRE ACCESS PLAN  
VESTING TENTATIVE MAP**

CITY OF NEWARK, CALIFORNIA

ALAMEDA COUNTY, CALIFORNIA

City of Newark  
1000 Broadway, Newark, CA 94560  
Tel: (925) 861-1000  
Fax: (925) 861-1001

DATE: OCTOBER 04, 2011

SCALE: 1" = 40'

LEGEND

- ALAMEDA COUNTY FIRE TRUCK TURN TEMPLATE FOR THE CITY OF NEWARK
- TURNED FIRE TRUCK
- PARKING STALL
- FIRE APPARATUS ACCESS ROAD
- FIRE APPARATUS ACCESS

**Project Summary:**

138 Dwelling Units

**SFD Summary:**

53 du. SFD

**Proposed Unit Mix**

Unit Plans	# of Units on Site
1	9 Units
2	12 Units
2X	14 Units
3/3X	18 Units
<b>Total Units</b>	<b>53 Units</b>

**TH Summary:**

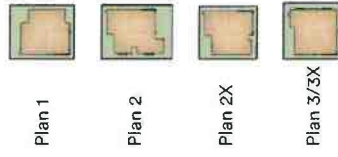
85 du. 3-story Townhomes

**Proposed Unit Mix**

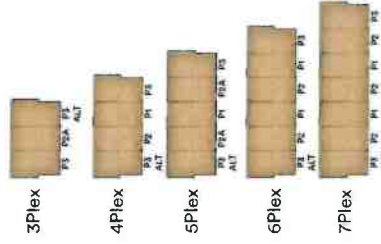
Unit Plans	# of Units on Site
P1	23 Units
P2	21 Units
P2A	9 Units
P3	16 Units
P3-ALT	16 Units
<b>Total Units</b>	<b>85 Units</b>



**SFD UNIT PLANS**



**TH UNIT PLANS**



**EXHIBIT B p8**

ILLUSTRATIVE SITE PLAN

A-SP



SCHEMATIC DESIGN  
07-12-2018

# 2017.0147

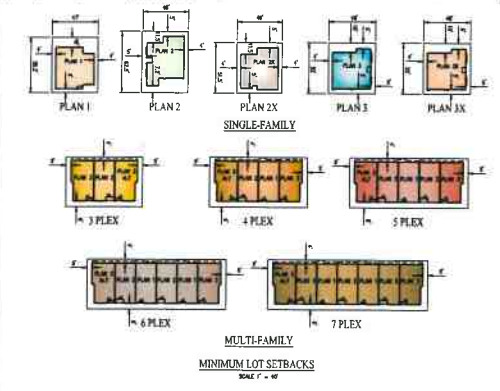
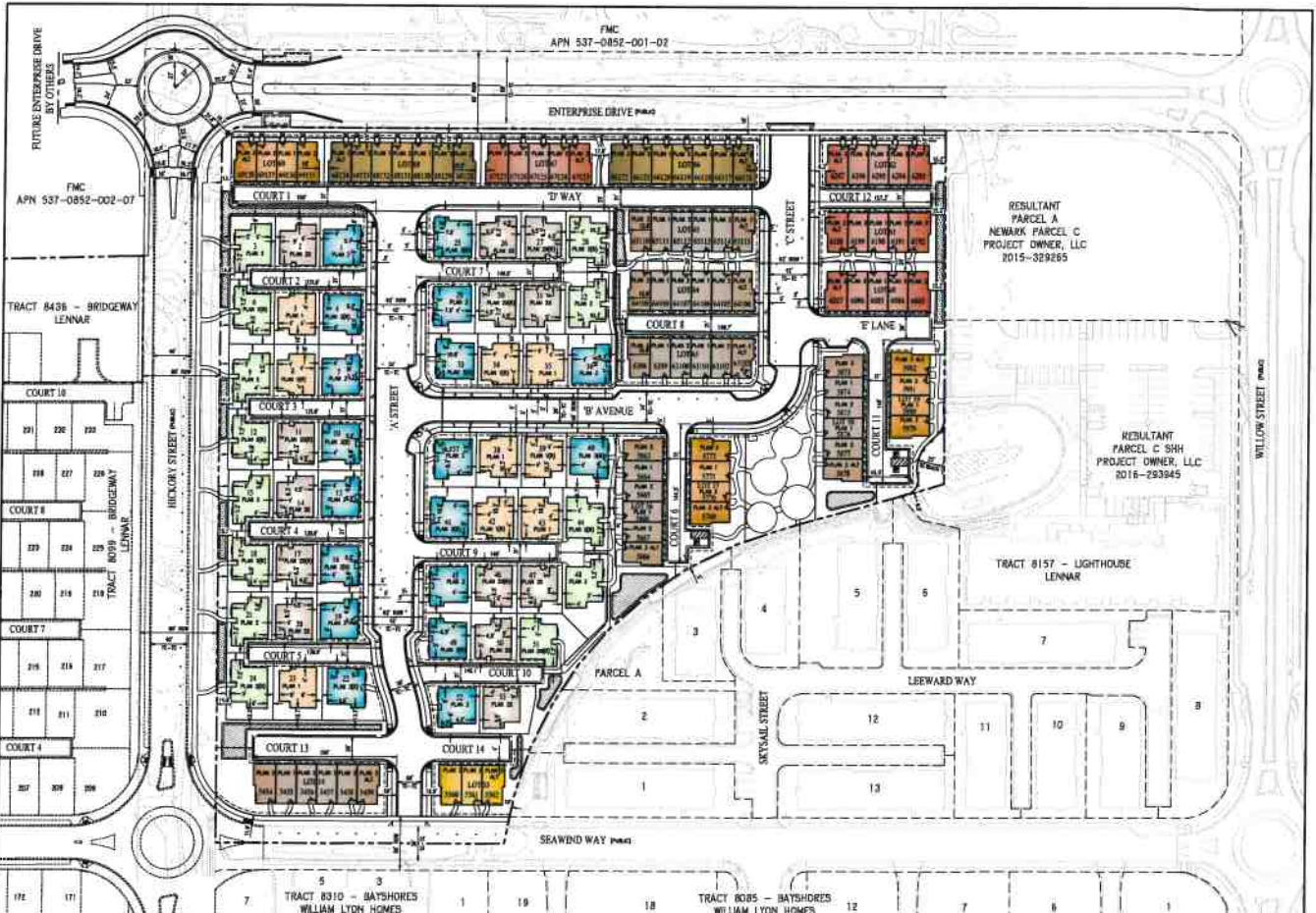
NEWARK ASHLAND  
NEWARK, CALIFORNIA

TRUBAITEK HOMES

Architecture + Planning  
1000 35th St  
KIPP, CA 94503







**PRODUCT MIX**

PLAN	UNITS	PLAN	UNITS
PLAN 1	10 UNITS	PLAN 3	30 UNITS
PLAN 2	12 UNITS	PLAN 4	40 UNITS
PLAN 3	15 UNITS	PLAN 5	50 UNITS
PLAN 4	18 UNITS	PLAN 6	60 UNITS
PLAN 5	22 UNITS	PLAN 7	70 UNITS

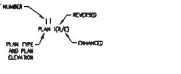
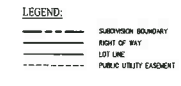


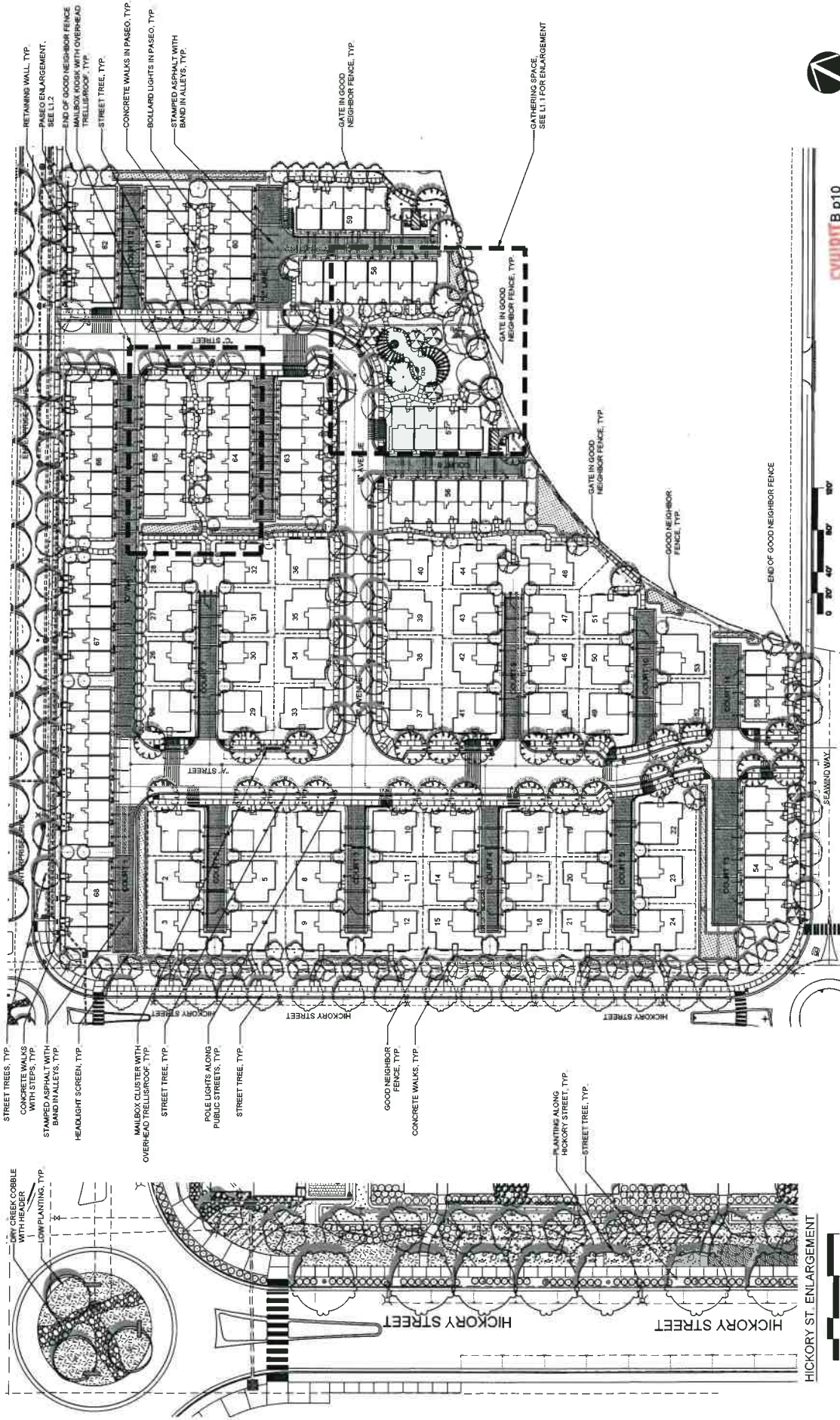
EXHIBIT B p9

# TRACT 8459 COMPASS BAY DEVELOPMENT PLAN

CITY OF NEWARK ALAMEDA COUNTY CALIFORNIA

SCALE: 1" = 40'

DATE: OCTOBER 24, 2014



**EXHIBIT B p10**

**OVERALL LANDSCAPE PLAN**  
**L1.0**  
 08/2018

**COMPASS BAY**  
 Newark, California

**VAN DORN ABED**  
**LANDSCAPE ARCHITECTS, INC.**  
 81 W 15TH STREET, SAN FRANCISCO, CA  
 ZIP 94103 PH (415) 864-9521 FAX (415) 864-0796

**Trumark Companies**  
 3001 Bishop Drive, Suite 100  
 San Ramon, CA 94583 (925) 999-3950

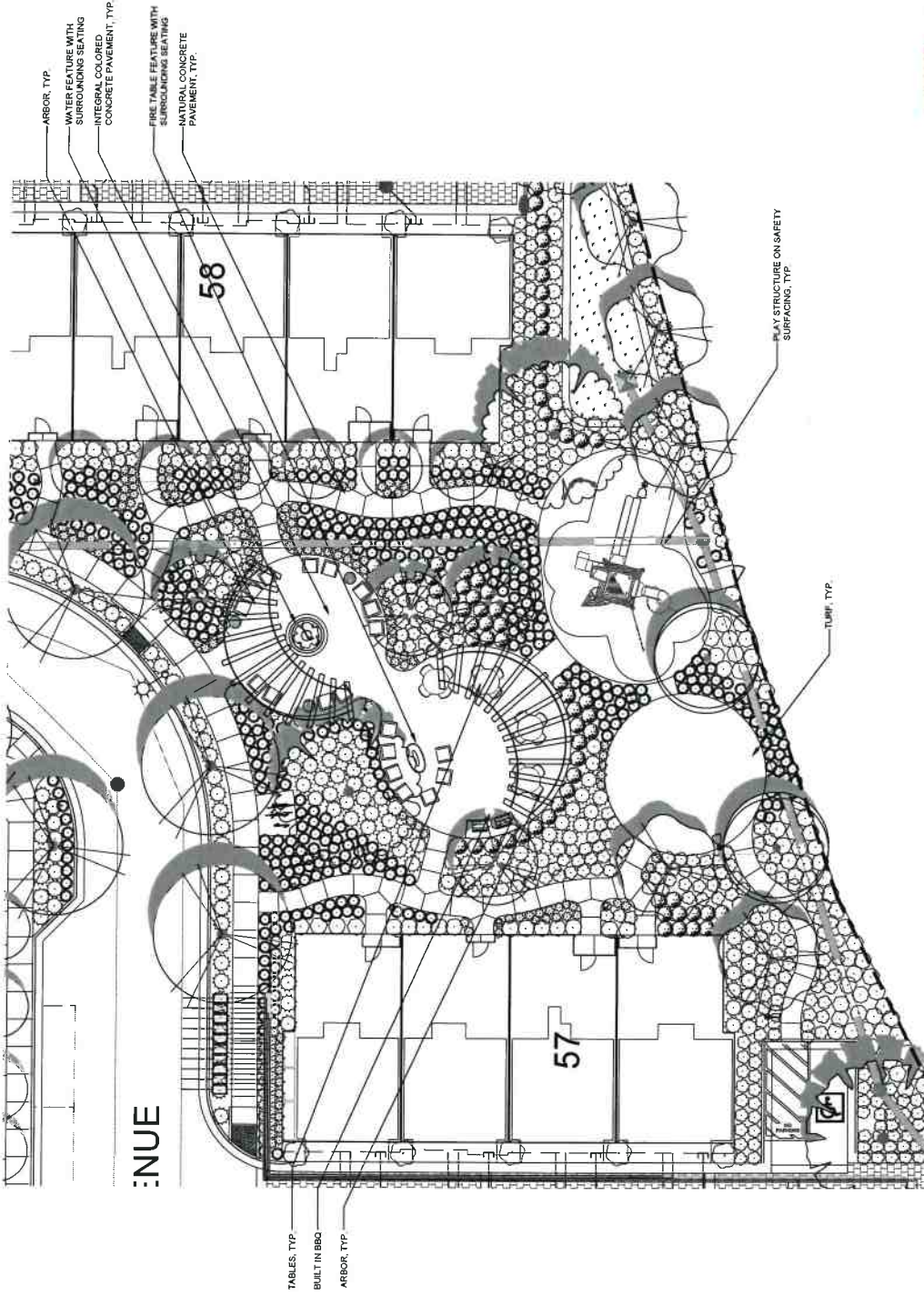


EXHIBIT B p11



GATHERING SPACE ENLARGEMENT  
L1.1

08/17/16

# COMPASS BAY

Newark, California

**VAN DORN ABED**  
LANDSCAPE ARCHITECTS, INC.  
81 14TH STREET, SAN FRANCISCO, CA  
ZIP 94103 PH (415) 864-8921 FAX (415) 864-4798

**Trumark Companies**

3001 Bishop Drive, Suite 100  
San Ramon, CA 94583 (925) 999-3950

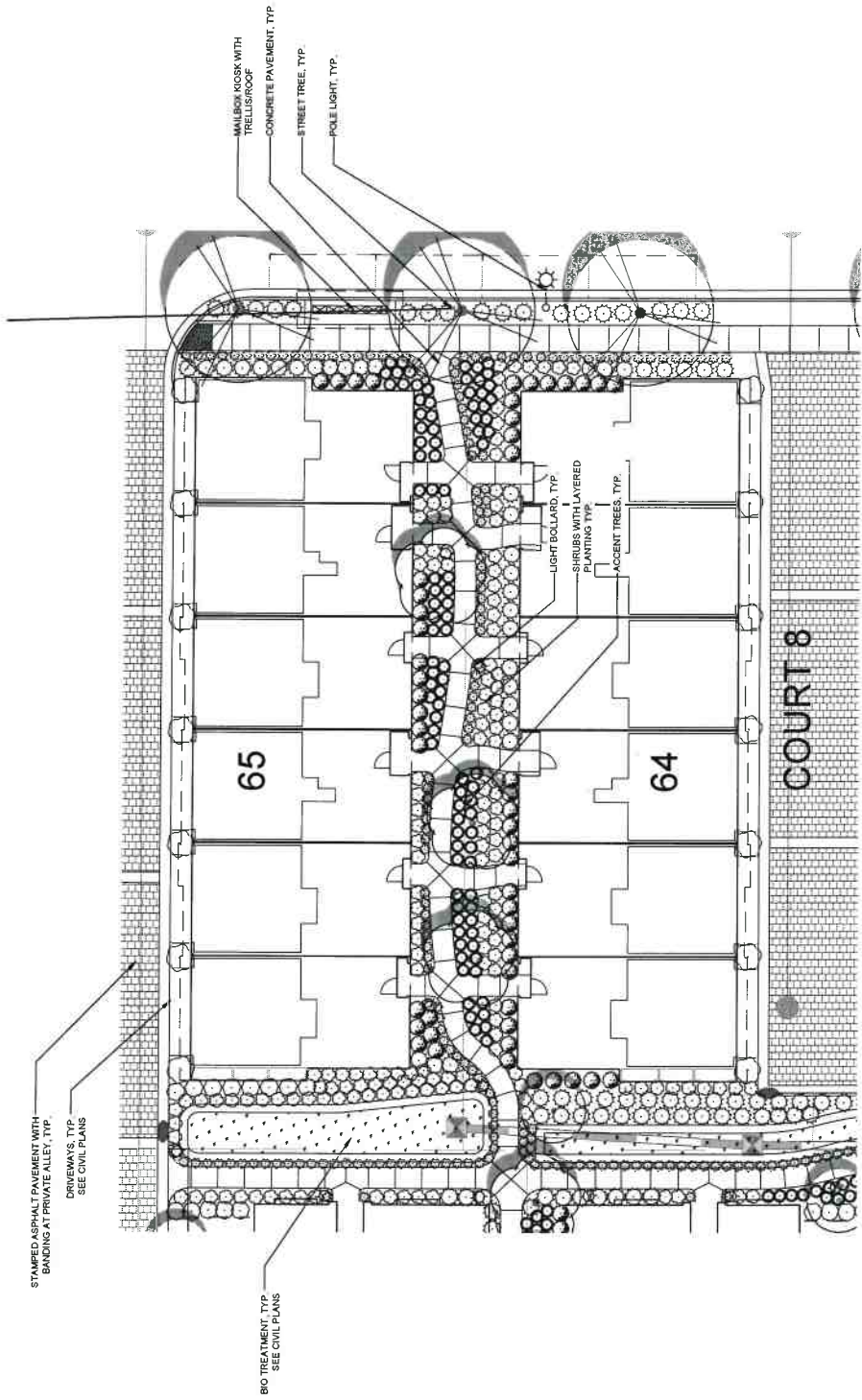


EXHIBIT B p12



**Trumark Companies**  
 3001 Bishop Drive, Suite 100  
 San Ramon, CA 94583 (925) 999-3950

**VAN DORN ABED**  
 LANDSCAPE ARCHITECTS, INC.  
 81 14TH STREET, SAN FRANCISCO, CA  
 78 94103 PH (415) 864-8021 FAX (415) 864-0796

**COMPASS BAY**  
 Newark, California

**PASEO ENLARGEMENT**  
 L1.2  
 08/17/18

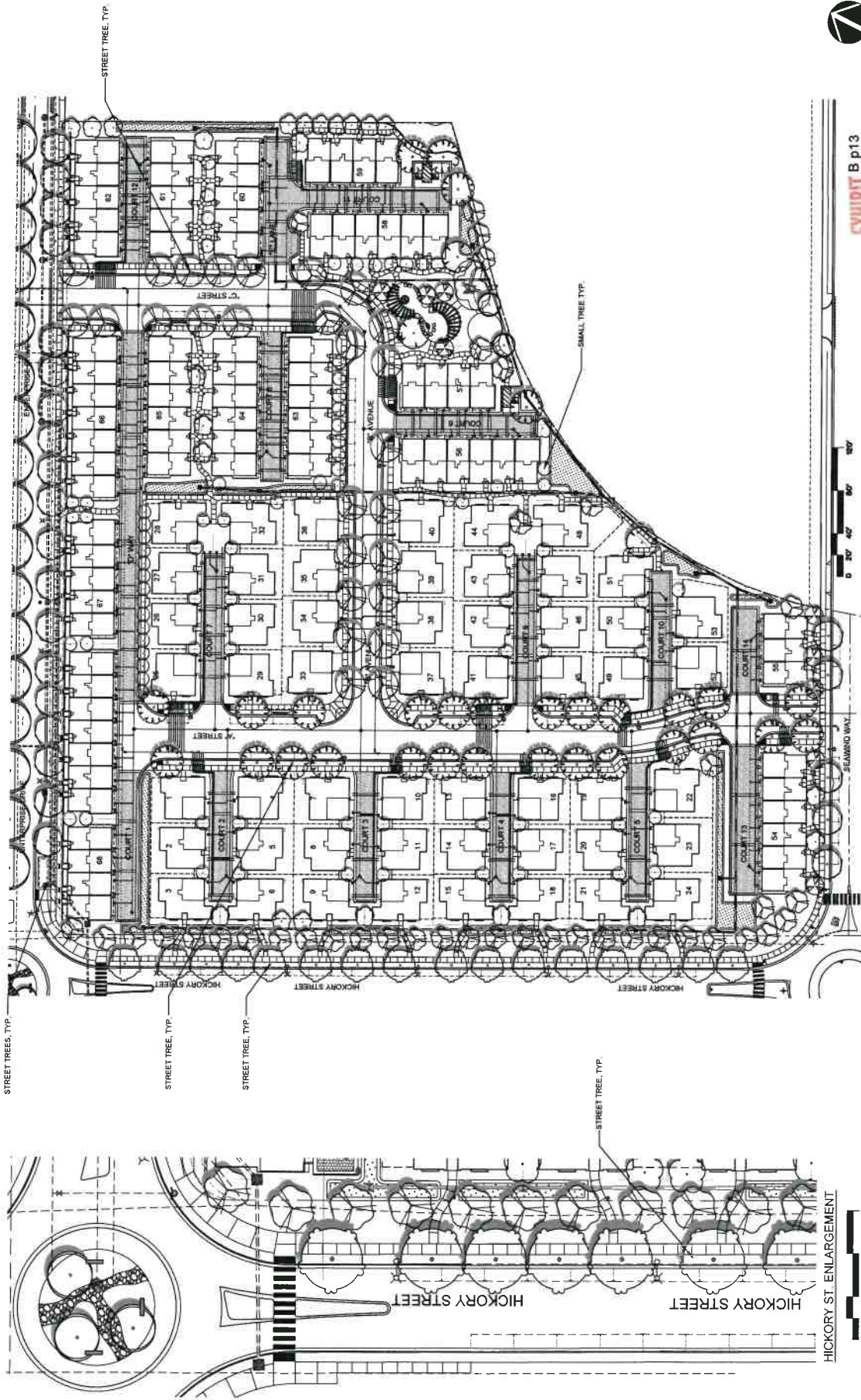


EXHIBIT B p13

08/20/18

TRUMARK COMPANIES  
 TREE PLAN / UTILITY COORDINATION  
 L1.3

COMPASS BAY  
 Newark, California

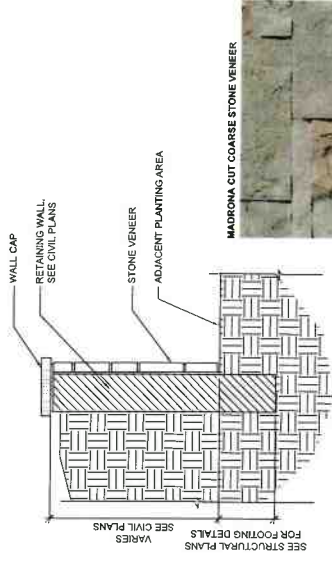
**VAN DORN ABED**  
 LANDSCAPE ARCHITECTS, INC.  
 81 W 14TH STREET, SAN FRANCISCO, CA  
 94103 PH (415) 864-0721 FAX (415) 864-0706

**Trumark Companies**  
 3001 Bishop Drive, Suite 100  
 San Ramon, CA 94583 (925) 999-3950

**STREETLIGHT & POLE LIGHT IN PARK**  
 MODEL: UrbanScope  
 COLORS: Bronze  
 www.lumez.com



**BOLLARD LIGHT**  
 MODEL: Siena Ballard  
 COLORS: Urban Bronze  
 www.stanberglighting.com



**RECEPTACLE**  
 MODEL: 287  
 COLORS: Bronze  
 www.dimer.com



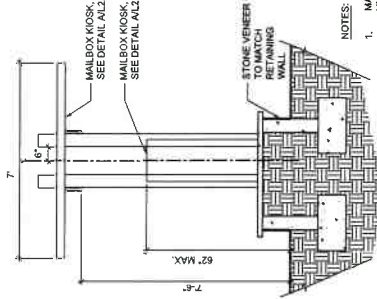
**SITE LIGHTING**  
 NTS

**BIKE RACK**  
 NTS

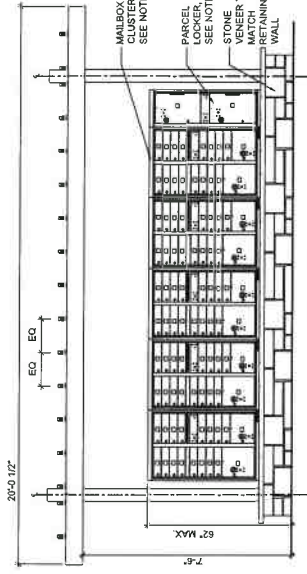
**RETAINING WALL**  
 NTS

**RECEPTACLE**  
 NTS

MADRONA CUT COARSE STONE VENEER



**A - SECTION**  
 $\frac{1}{2}''=1'-0''$

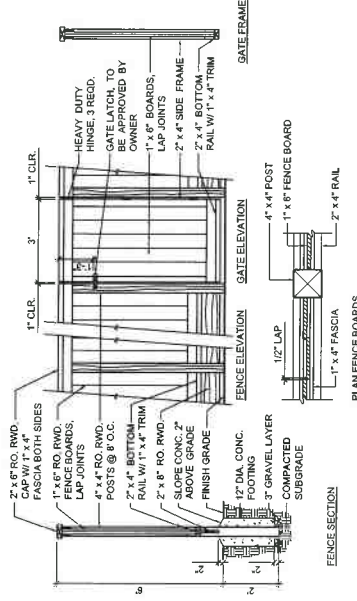


**B - ELEVATION**  
 $\frac{1}{2}''=1'-0''$

- NOTES:
- MAIL BOX TO BE 6 (SIX) - 16 UNITS AND 7 (SEVEN) 12 UNITS AND 2 (TWO) COMPARTMENTS PARCEL LOCKERS. EACH LOCATION INCLUDE 4 - 16 UNITS MAILBOX AND 5 - 16 UNITS MAILBOX AND 1 - 2 UNITS PARCEL LOCKER. INSTALL WITHOUT PEDESTAL CONTACT (860) 275 - 1147.
  - USPS APPROVED MAILBOX UNITS, FLORENCE "F" SERIES VITAL™ 1570-16 AND VITAL™ 1570-12. COLOR TO BE DARK BRONZE.
  - USPS APPROVED PARCEL LOCKER, FLORENCE "F" SERIES VALIANT™ 1590-71. COLOR TO BE DARK BRONZE.

**CLUSTER MAILBOX UNIT**  
 AS SHOWN

**GOOD NEIGHBOR FENCE AND GATE**  
 NTS



**EXHIBIT B p14**

**Trumark Companies**  
 3001 Bishop Drive, Suite 100  
 San Ramon, CA 94583 (925) 999-3950



**VAN DORN ABED**  
 LANDSCAPE ARCHITECTS, INC.  
 81 14TH STREET, SAN FRANCISCO, CA  
 ZIP 94103 PH (415) 864-9271 FAX (415) 864-0706

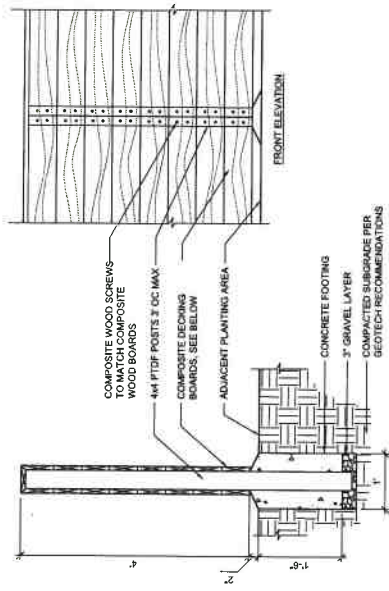
**COMPASS BAY**

Newark, California

**LANDSCAPE IMAGERY**

L2.0

07/19/18



**NOTE:**

1. COMPOSITE DECKING BOARDS TO BE 1"x6" TREX DECKING. COLOR TO BE SPICED RUM. AVAILABLE THROUGH GOLDEN STATE LUMBER, (510) 818-1000
2. MITER ALL CORNERS AND WRAP BOARDS AROUND EACH WALL END.

**HEADLIGHT SCREEN AT ALLEY TERMINUS**

1"x4"-0"



**CLIMBERS**



**PLAY STRUCTURE: 2-5 YEARS**



**OTHER PLAY ELEMENTS**



**SPINNER**



**PLAY STRUCTURE: 5-12 YEARS**

**OPTIONAL PLAY ELEMENTS**

1"x3"

**EXHIBIT B p15**

**Trumark Companies**

3001 Bishop Drive, Suite 100  
San Ramon, CA 94583 (925) 999-3950



**VAN DORN ABED**  
LANDSCAPE ARCHITECTS, INC.  
81 14TH STREET, SAN FRANCISCO, CA  
SF 94133 PH (415) 864-8211 FAX (415) 864-0798

**COMPASS BAY**

Newark, California

**LANDSCAPE IMAGERY**

**L2.1**

08/20/16



ELEVATION '1A'  
color scheme 1



ELEVATION '1B'  
color scheme 5



ELEVATION '1C'  
color scheme 9



Architecture • Planning  
888-455-5549  
ktgy.com



COMPASS BAY  
Newark, Ca  
# 2017-0147

SCHEMATIC DESIGN  
09-07-2018

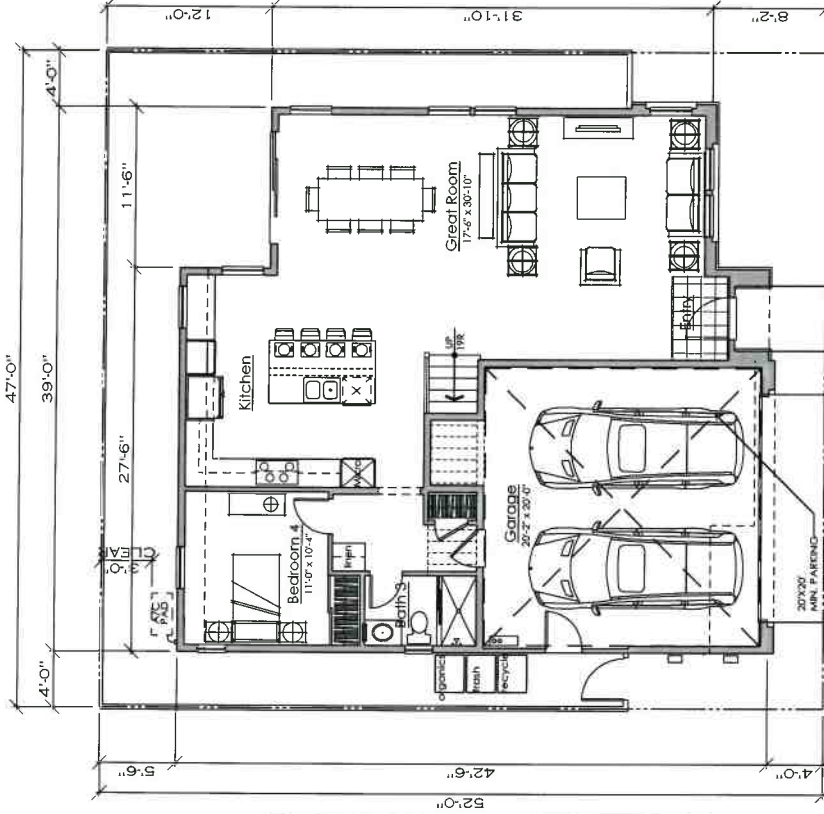


EXHIBIT B p16

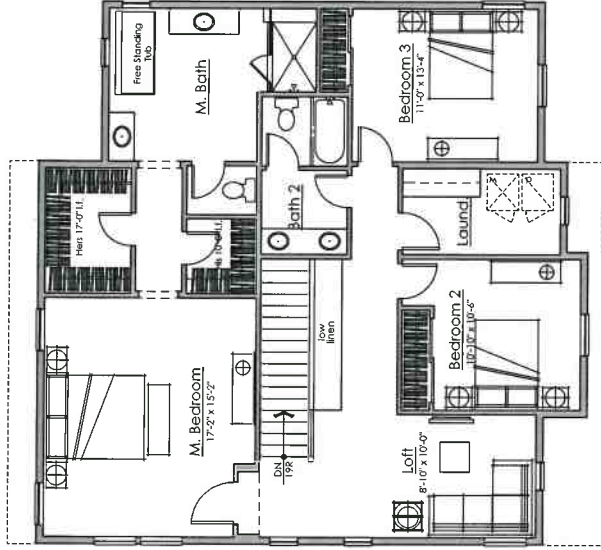
PLAN 1  
FRONT ELEVATIONS

A1.0





First Floor  
1079 Sq. Ft.



Second Floor  
1405 Sq. Ft.

4 Bedrooms + Loft  
3 Baths  
2484 Sq. Ft.

EXHIBIT B p17

PLAN 1 FLOOR PLAN A1.1

SCHEMATIC DESIGN  
08-07-2018

COMPASS BAY  
Newark, Ca # 2017-0147

TRIMARK HOMES

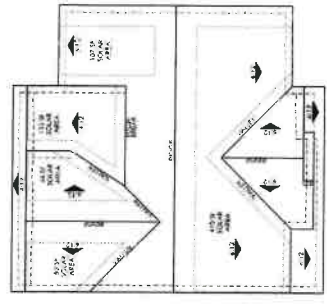
Architecture + Planning  
888.456.5549  
kgy.com



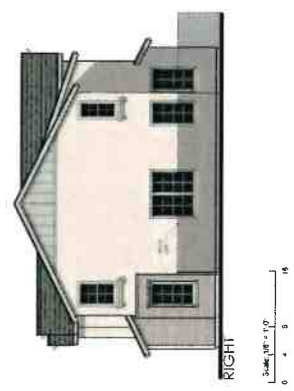
- 1A Material Legend:
- Arch. Grade Composition Shingle
- Stucco Finish
- Cementitious Board and Bath Siding
- Shutters
- Decorative Kicker / Corbel
- Enhanced Sills
- 1x Stucco Finish Trim
- Brick Veneer



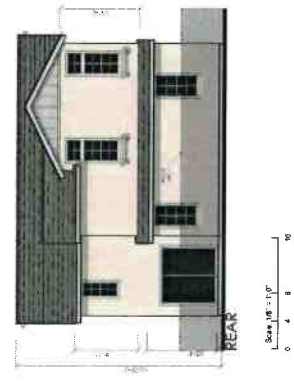
ELEVATION '1A'  
color scheme 1



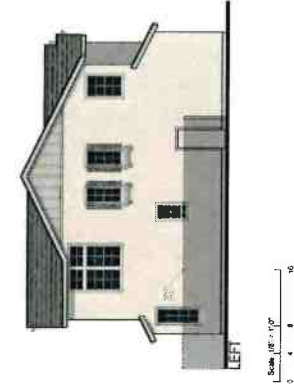
ROOF PLAN  
ARCH. GRADE  
COMPOSITION SHINGLE  
#2017-0117



RIGHT



REAR



LEFT



Architecture + Planning  
888.409.5880  
kjp@ktgy.com



COMPASS BAY  
Newark, Ct.  
# 2017-0117

SCHEMATIC DESIGN  
08-07-2018



EXTERIOR ELEVATIONS  
PLAN 1A

EXHIBIT B p18

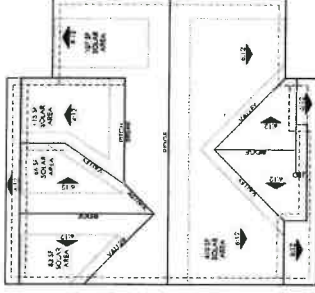
A1.2

- 1B Material Legend:
- Arch. Grade Composition Shingle
  - Stucco Finish
  - Cementitious Board and Batt Siding
  - Decorative Kicker / Corbel
  - Enhanced Sills
  - 1x Stucco Finish Trim
  - Stone Veneer



ELEVATION '1B'  
color scheme 5

Scale: 1/8" = 1'-0"



ROOF PLAN  
SCALE: 1/8" = 1'-0"

Scale: 1/8" = 1'-0"



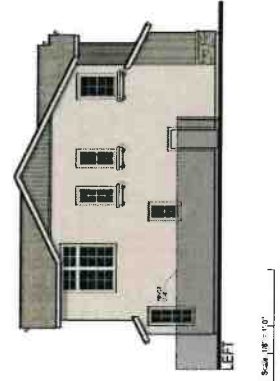
RIGHT

Scale: 1/8" = 1'-0"



REAR

Scale: 1/8" = 1'-0"



LEFT

Scale: 1/8" = 1'-0"



Architecture + Planning  
888.458.5849  
ktgy.com

TRULINKARIC HOMES

COMPASS BAY  
Newark, Ca  
# 2017-0147

SCHEMATIC DESIGN  
06-07-2018



EXTERIOR ELEVATIONS  
PLAN 1B

EXHIBIT B p19

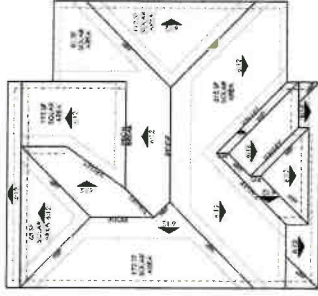
A1.3

- 1C**  
**Material Legend:**  
 Arch. Grade Composition Shingle  
 Stucco Finish  
 Cementitious Siding  
 Shutters  
 Decorative Kicker / Corbel  
 Enhanced Sills  
 1x Stucco Finish Trim  
 Brick Veneer



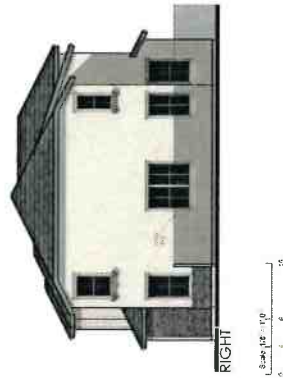
**ELEVATION '1C'**  
 color scheme 9

Scale: 1/8" = 1'-0"  
 0 2 4 6



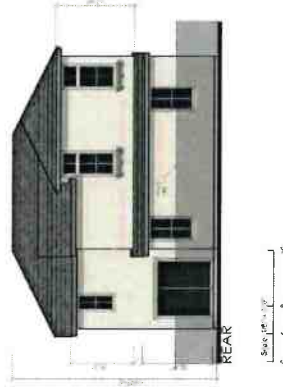
**ROOF PLAN**  
 1/2" = 1'-0"  
 0 2 4 6

Scale: 1/8" = 1'-0"  
 0 2 4 6



**RIGHT**

Scale: 1/8" = 1'-0"  
 0 2 4 6



**REAR**

Scale: 1/8" = 1'-0"  
 0 2 4 6



**LEFT**

Scale: 1/8" = 1'-0"  
 0 2 4 6



Architecture & Planning  
 888 400 5446  
 ktgy.com



**COMPASS BAY**  
 Newark, Co #2017-0147

**SCHEMATIC DESIGN**  
 06.01.2018



**EXHIBIT B p20**  
 EXTERIOR ELEVATIONS  
 PLAN 1C



ELEVATION - '2A'  
color scheme 3



ELEVATION - '2B'  
color scheme 7



ELEVATION - '2C'  
color scheme 11



Architecture + Planning  
888.455.5645  
ktgy.com



COMPASS BAY  
Newark, Ca  
# 2017-0147

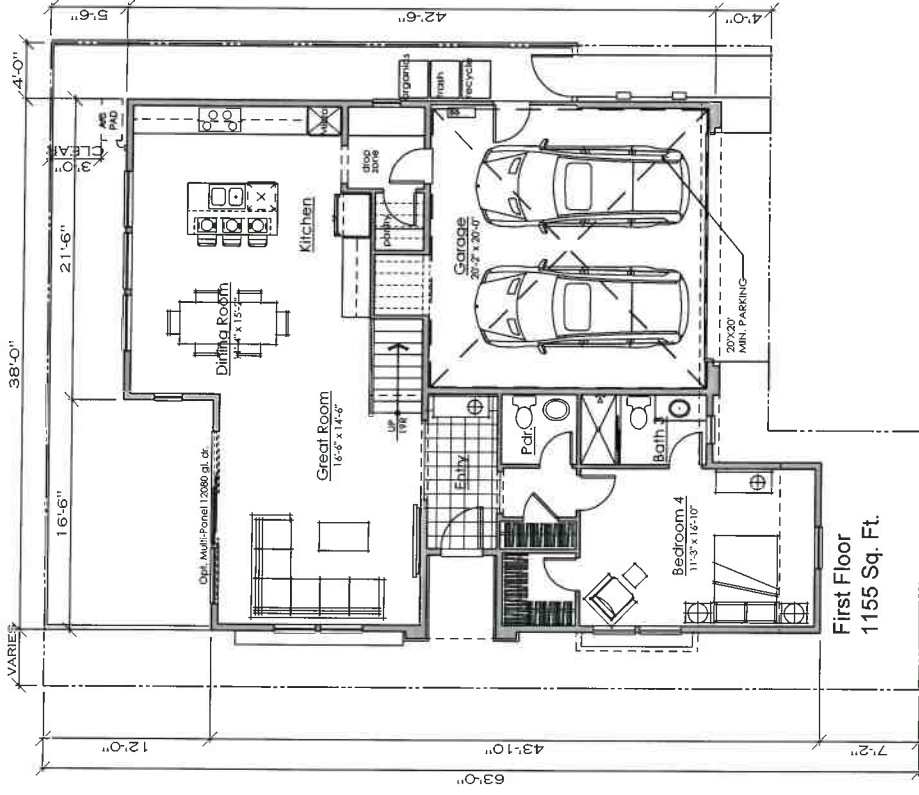
SCHEMATIC DESIGN  
06.07.2018



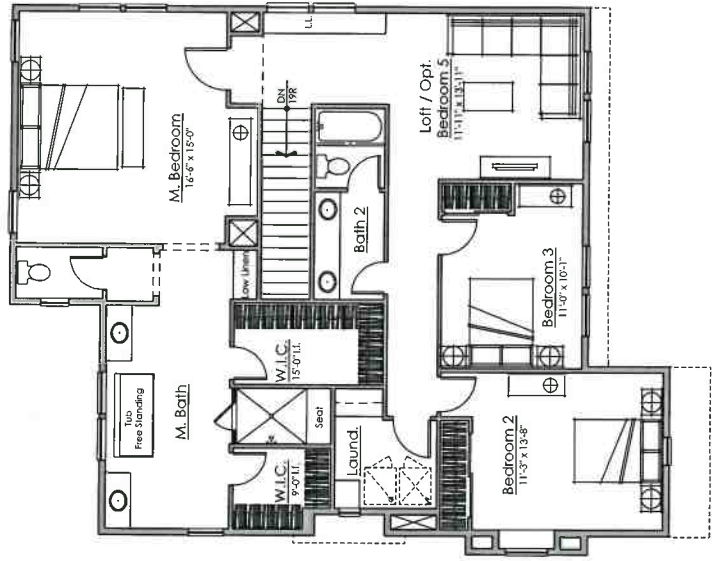
PLAN 2  
FRONT ELEVATIONS

EXHIBIT B p21

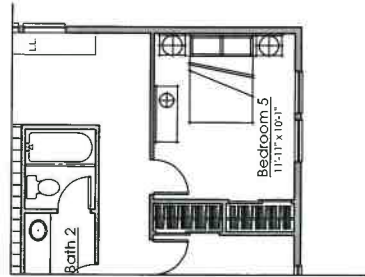
A2.0



First Floor  
1155 Sq. Ft.



Second Floor  
1520 Sq. Ft.



Optional Bedroom 5

- 4 Bedrooms + Loft
- Optional Bedroom 5
- 3 Baths
- 2675 Sq. Ft.

EXHIBIT B p22



SCHEMATIC DESIGN  
06.07.2018

COMPASS BAY  
Newark, Ca #2017.047

TRU-MARK HOMES

Architectural Planning  
888.468.2643  
ktgy.com

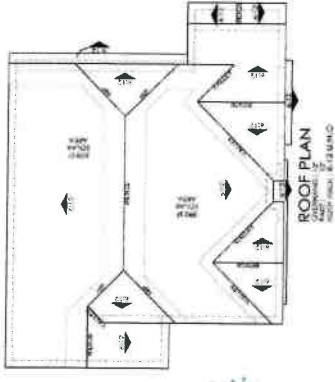


PLAN 2 FLOOR PLAN A2.1

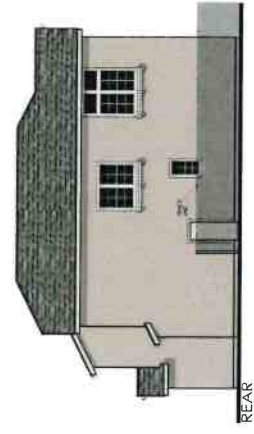
- 2A  
**Material Legend:**  
 Arch. Grade Composition Shingle  
 Stucco Finish  
 Cementitious Board and Batt Siding  
 Shufflers  
 Decorative Kicker / Corbel  
 Enhanced Sills  
 1x Stucco Finish Trim  
 Brick Veneer



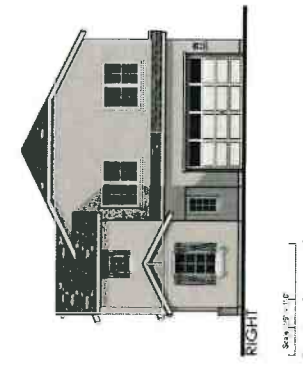
**ELEVATION - '2A'**  
 color scheme 3



LEFT



REAR



RIGHT



Architecture + Planning  
 888 456 3549  
 #2017.0147



COMPASS BAY  
 Newark, CA #2017.0147

SCHEMATIC DESIGN  
 06-07-2018



EXHIBIT B p23

EXTERIOR ELEVATIONS  
 PLAN 2A

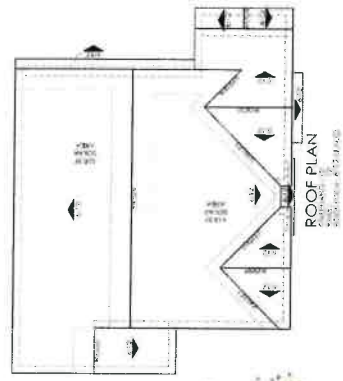
A2.2

- 2B  
 Material Legend:  
 Arch. Grade Composition Shingle  
 Stucco Finish  
 Cementitious Board and Batt Siding  
 Decorative Kicker / Corbel  
 Enhanced Sills  
 1x Stucco Finish Trim  
 Stone Veneer



ELEVATION - '2B'  
 color scheme 7

Scale: 1/8" = 1'-0"



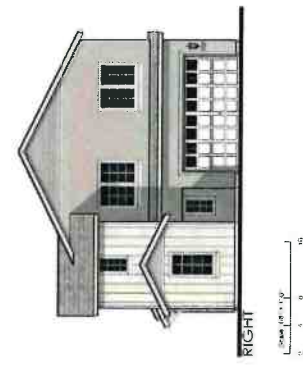
Scale: 1/8" = 1'-0"



Scale: 1/8" = 1'-0"



Scale: 1/8" = 1'-0"



Scale: 1/8" = 1'-0"



Architecture + Planning  
 888 455 3549  
 (Apr 2011)



COMPASS BAY  
 Newark, Ca # 2017-0147

SCHEMATIC DESIGN  
 06.07.2015



EXHIBIT B p24  
 EXTERIOR ELEVATIONS  
 PLAN 2B

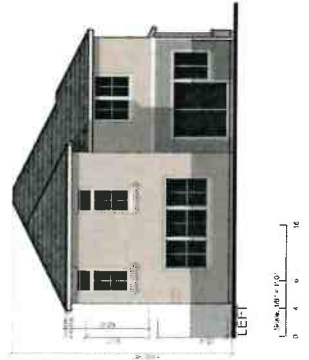
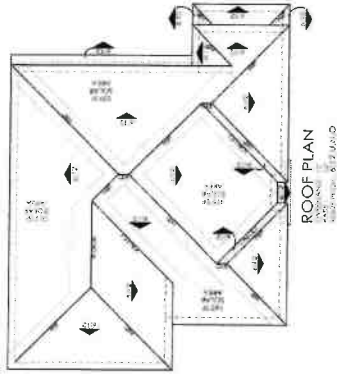




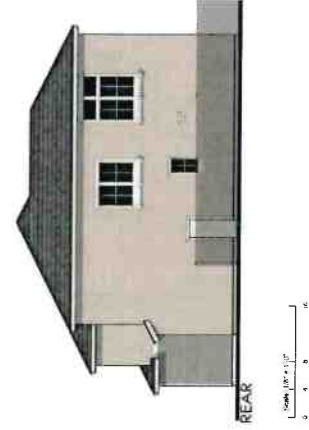
ELEVATION - '2C'  
color scheme 11



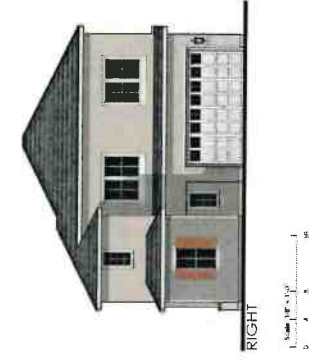
- 2C Material Legend:
- Arch. Grade Composition Shingle
  - Stucco Finish
  - Cementitious Siding
  - Decorative Kicker / Corbel
  - Enhanced Sills
  - 1x Stucco Finish Trim
  - Brick Veneer



LEFT



REAR



RIGHT



Architectural & Planning  
3000  
1000

TRU-MARK  
CORP.

COMPASS BAY  
Newark, Ca # 2017-0147

SCHEMATIC DESIGN  
08.07.2018

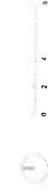


EXHIBIT B p25  
EXTERIOR ELEVATIONS  
PLAN 2C

A2.4



ELEVATION '2XA'  
color scheme 2



ELEVATION '2XB'  
color scheme 6



ELEVATION '2XC'  
color scheme 12

Architecture • Planning  
3354 4th St  
ktgy.com



TRULIFLEX • COVAGES

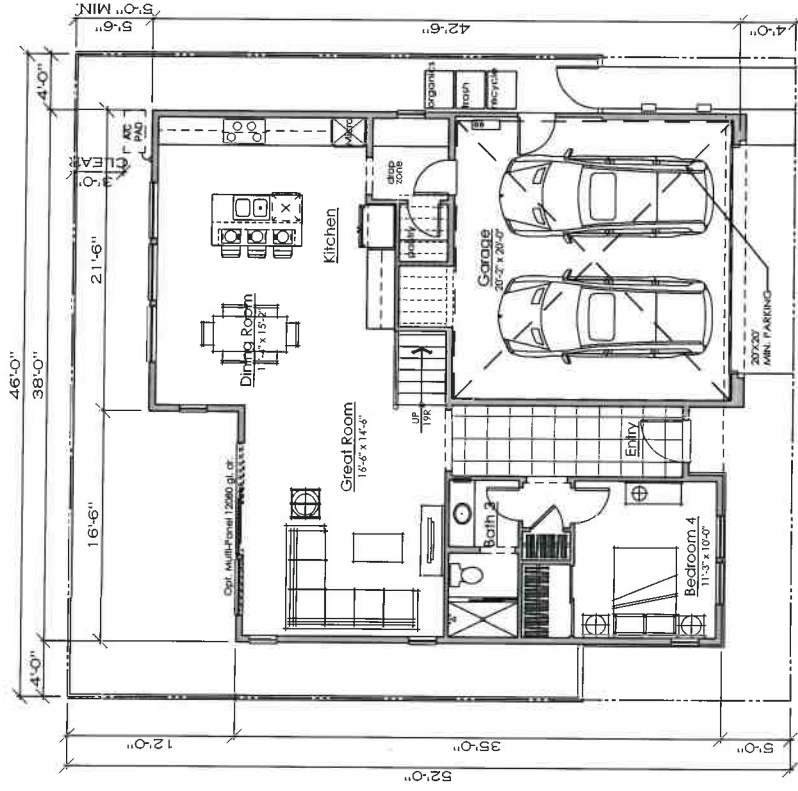
COMPASS BAY  
Newark, Ca  
#2017-0147

SCHEMATIC DESIGN  
08-07-2018

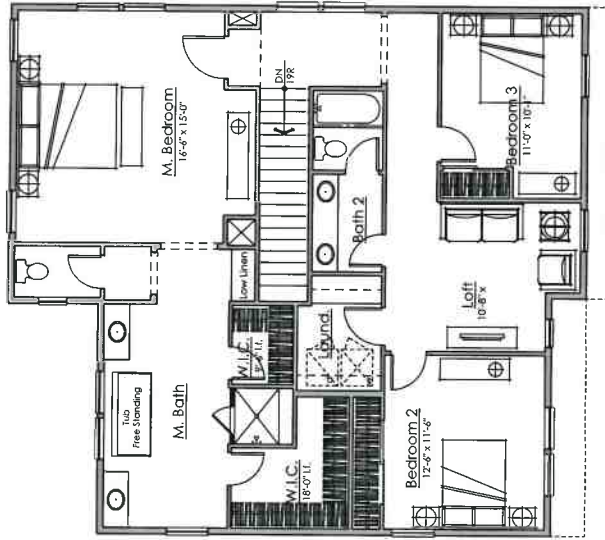
EXHIBIT B p26

PLAN 2X  
FRONT ELEVATIONS

A2.0X



First Floor  
1038 Sq. Ft.



Second Floor  
1416 Sq. Ft.

4 Bedrooms + Loft  
3 Baths  
2454 Sq. Ft.

EXHIBIT B p27

SCHEMATIC DESIGN  
06-07-2016

COMPASS RAY  
Newark, Ca # 20170147

TRUMARK-HOMES

Architect's Planning  
800.355.8346  
kpr.com

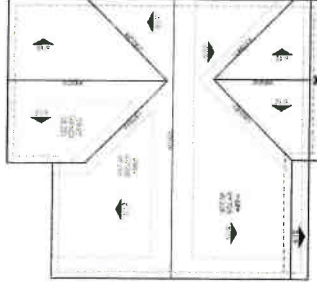
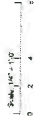


PLAN 2X FLOOR PLAN A2.1X

- 2XA  
 Material Legend:  
 Arch. Grade Composition Shingle  
 Stucco Finish  
 Cementitious Board and Batt Siding  
 Shutters  
 Decorative Kicker / Corbel  
 Enhanced Sills  
 1x Stucco Finish Trim  
 Brick Veneer



ELEVATION '2XA'  
 color scheme 2



ROOF PLAN  
 1/2" = 1'-0"



RIGHT



REAR



LEFT



Architecture • Planning  
 888.456.5889  
 ktgy.com



COMPASS BAY  
 Newark, CA # 201-0947

SCHEMATIC DESIGN  
 08-07-2018



EXTERIOR ELEVATIONS  
 PLAN 2XA

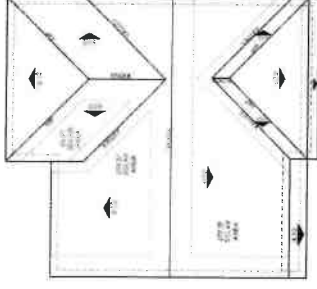
EXHIBIT B p28

A2.2X

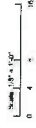
- 2XB  
 Material Legend:  
 Arch. Grade Composition Shingle  
 Stucco Finish  
 Cementitious Board and Batt Siding  
 Decorative Kicker / Carbel  
 Enhanced Sills  
 1x Stucco Finish Trim  
 Stone Veneer



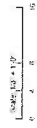
ELEVATION '2XB'  
 color scheme 6



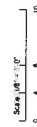
ROOF PLAN  
 1/8" = 1'-0"



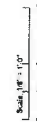
RIGHT



REAR



LEFT



Architecture + Planning  
 888.459.5846  
 ktp@ktgy.com



COMPASS BAY  
 Newark, Ca. # 2017-0147

SCHEMATIC DESIGN  
 08/07/2015



EXTERIOR ELEVATIONS  
 PLAN 2XB

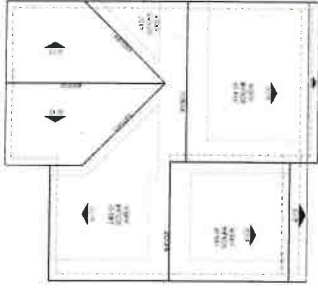
EXHIBIT B p29

A2.3X

- 2XC  
 Material Legend:  
 Arch. Grade Composition Shingle  
 Stucco Finish  
 Cementitious Siding  
 Decorative Kicker / Corbel  
 Enhanced Sills  
 1x Stucco Finish Trim  
 Brick Veneer



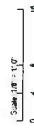
ELEVATION '2XC'  
 color scheme 12



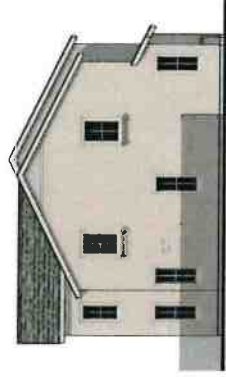
ROOF PLAN  
 12' x 18' x 12' x 12'



RIGHT



REAR



LEFT



Architecture • Planning  
 888.455.5698  
 ktgy.com



COMPASS BAY  
 #201-0147  
 Newark, CA

SCHEMATIC DESIGN  
 08-07-2018



EXHIBIT B p30  
 EXTERIOR ELEVATIONS  
 PLAN 2XC

A2.4X



ELEVATION '3A'  
color scheme 4



ELEVATION '3B'  
color scheme 8



ELEVATION '3C'  
color scheme 12



Architecture • Planning  
888.430.3549  
ktgy.com



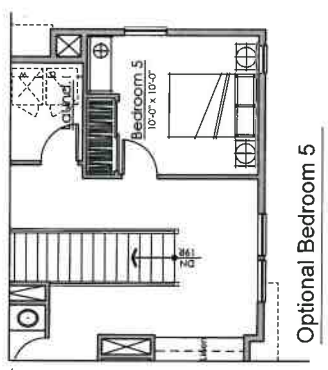
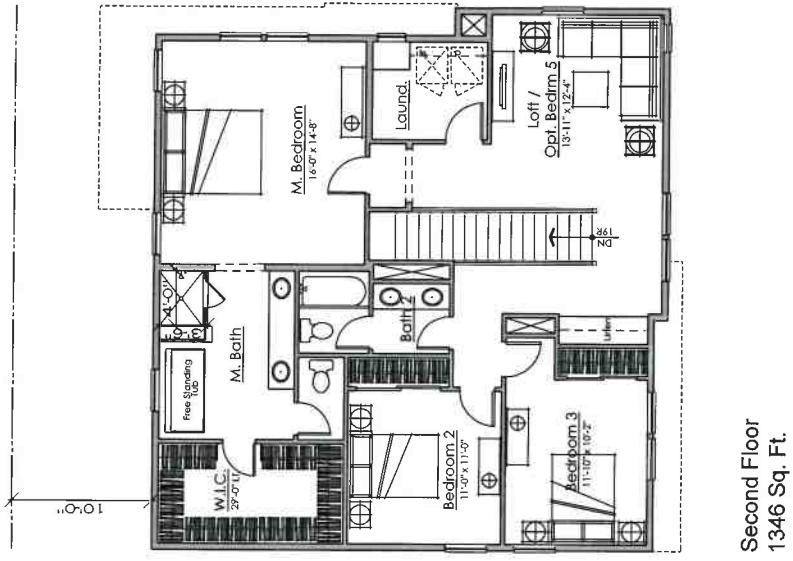
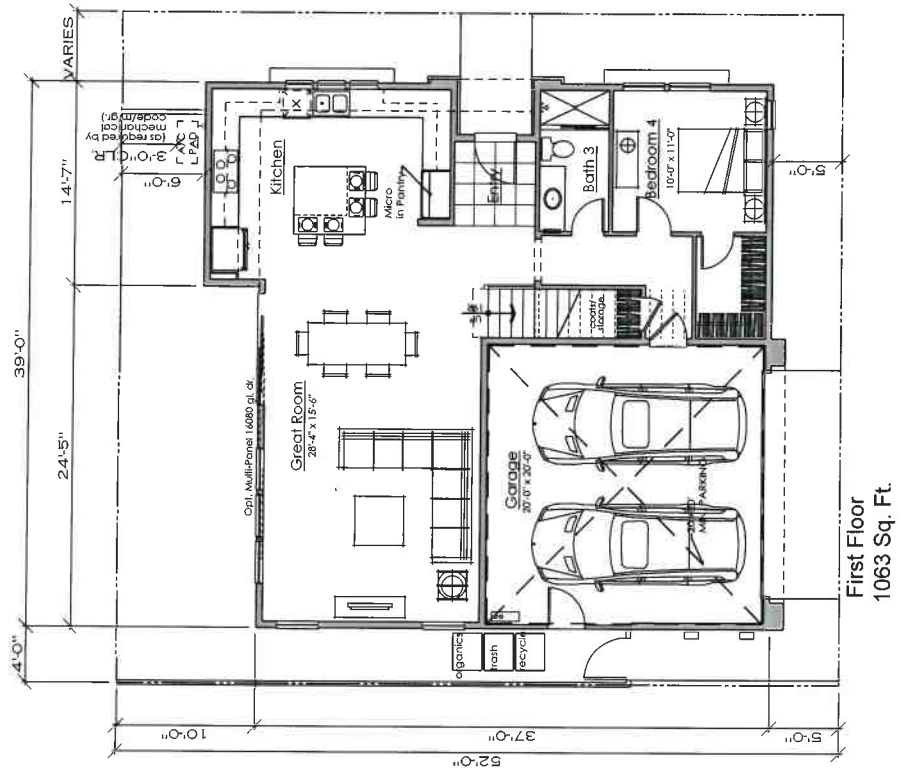
COMPASS BAY  
Norwalk, CT  
# 2017-1147

SCHEMATIC DESIGN  
06-07-2018



EXHIBIT B p31  
PLAN 3  
FRONT ELEVATIONS

A3.0



4 Bedrooms + Loft  
Optional Bedroom 5  
3 Baths  
2409 Sq. Ft.

EXHIBIT B p32

PLAN 3 FLOOR PLAN A3.1



SCHEMATIC DESIGN  
06-07-2018

COMPASS BAY  
Newport, Ca #2017-0147

TRUMARK HOMES

Architecture + Planning  
888.555.8546  
ktp.com



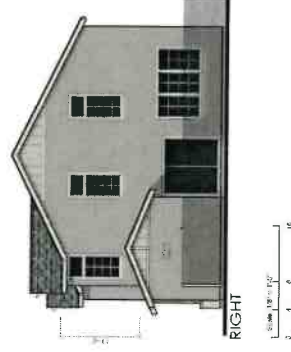
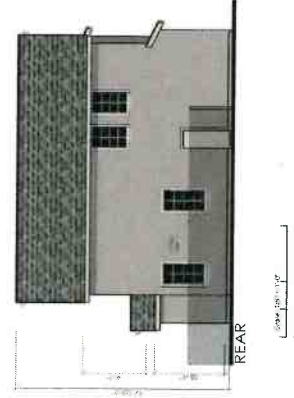
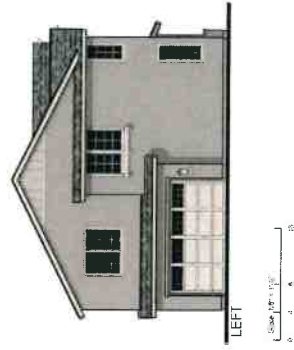
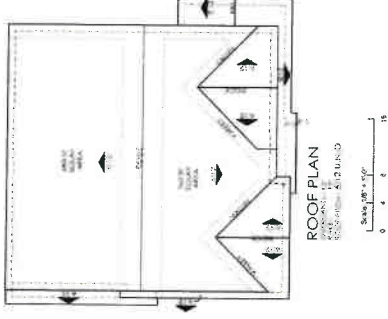




ELEVATION '3A'  
color scheme 4

Scale: 1/8" = 1'-0"

- 3A Material Legend:
- Arch. Grade Composition Shingle
  - Stucco Finish
  - Cementitious Board and Batt Siding
  - Shutters
  - Decorative Kicker / Corbel
  - Enhanced Sills
  - 1x Stucco Finish Trim
  - Brick Veneer

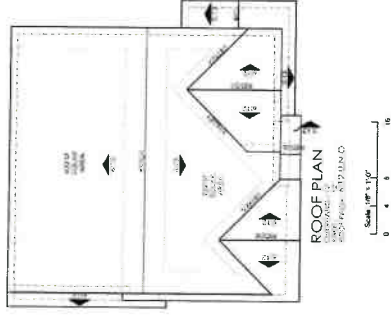




**ELEVATION '3B'**  
color scheme 8

Scale 1/8" = 1'-0"

- 3B Material Legend:
- Arch. Grade Composition Shingle
  - Stucco Finish
  - Cementitious Board and Bolt Siding
  - Decorative Kicker / Corbel
  - Enhanced Sills
  - 1x Stucco Finish Trim
  - Stone Veneer



LEFT



REAR



RIGHT



Acclivator Planning  
888-455-5140  
Any.com



COMPASS BAY  
Newark, Ca # 2017-0147

SCHEMATIC DESIGN  
06-07-2018



EXHIBIT B p34  
EXTERIOR ELEVATIONS  
PLAN 3B

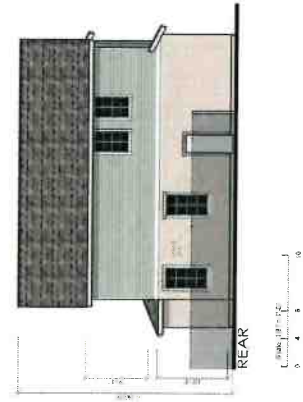
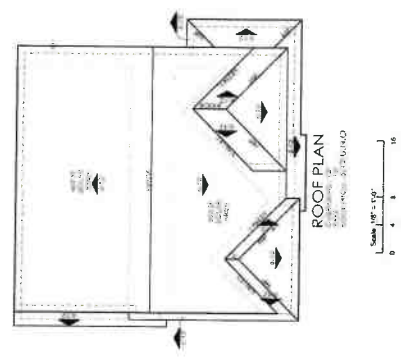
A3.3



ELEVATION '3C'  
color scheme 12



- 3C  
Material Legend:  
Arch. Grade Composition Shingle  
Stucco Finish  
Cementitious Siding  
Shutters  
Decorative Kicker / Corbel  
Enhanced Sills  
1x Stucco Finish Trim  
Brick Veneer



Architecture + Planning  
8000 450 Stiles  
Apt. 200



COMPASS BAY  
Newark, Ca # 2017-0147

SCHEMATIC DESIGN  
06-07-2018





ELEVATION '3AX'  
color scheme 1



ELEVATION '3BX'  
color scheme 5



ELEVATION '3CX'  
color scheme 9



Architectural Planning  
888.458.3649  
ktpg.com



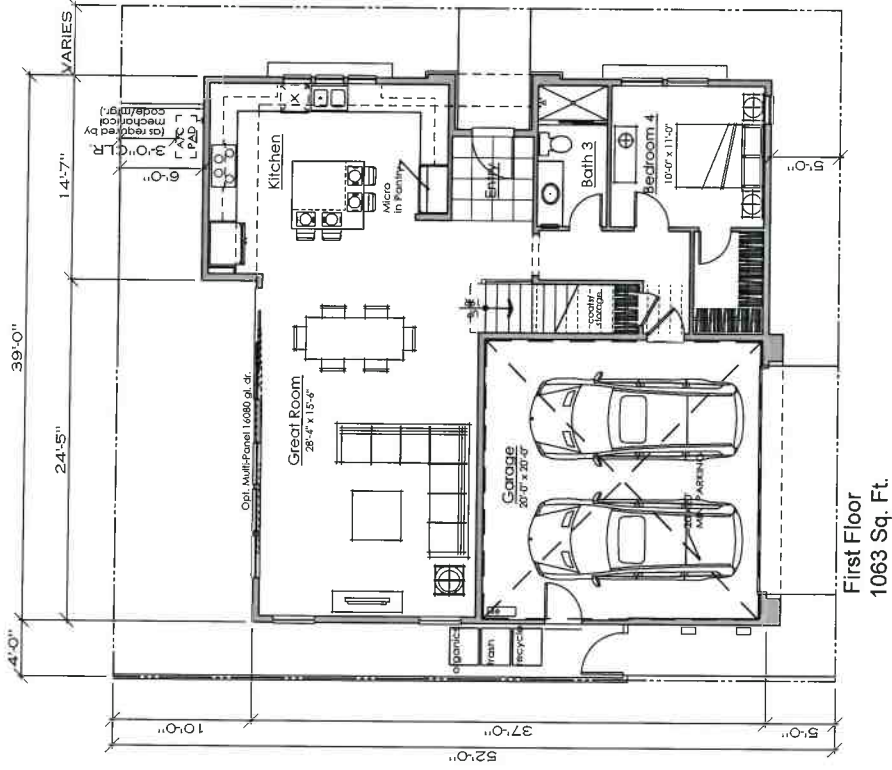
COMPASS BAY  
Newark, CA  
#2017-0147

SCHEMATIC DESIGN  
06/17/2018

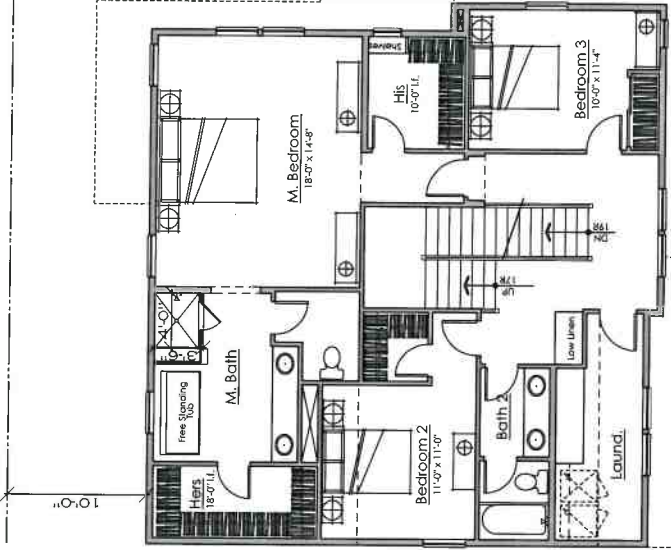


EXHIBIT B p36

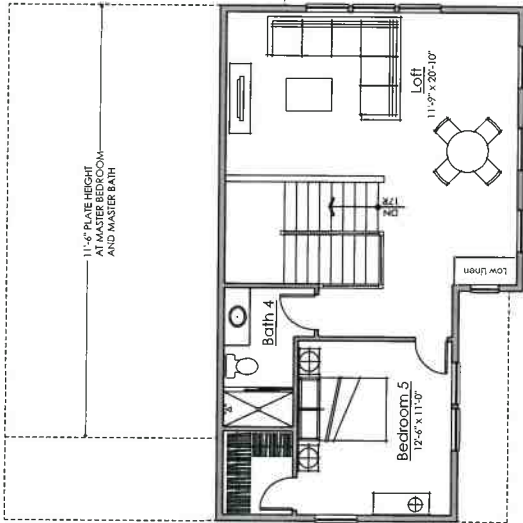
PLAN 3X  
FRONT ELEVATIONS  
A3.0X



First Floor  
1063 Sq. Ft.



Second Floor  
1382 Sq. Ft.



Third Floor  
668 Sq. Ft.

5 Bedrooms + Loft  
4 Baths  
3113 Sq. F

EXHIBIT B p37

PLAN 3X FLOOR PLAN A3.1X



SCHEMATIC DESIGN  
08-07-2018

CORPASS BAY  
Newark, CA # 2017-0147

TRUMARK HOMES

Architecture + Planning  
# 200-5540  
MJP.com

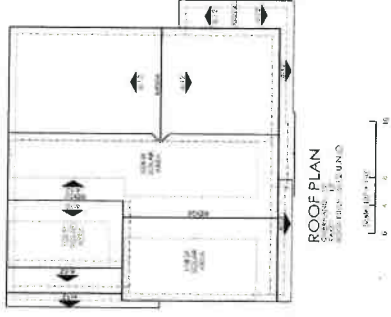


- 3AX  
 Material Legend:  
 Arch. Grade Composition Shingle  
 Stucco Finish  
 Cementitious Board and Batt Siding  
 Shufflers  
 Decorative Kicker / Corbel  
 Enhanced Sills  
 1x Stucco Finish Trim  
 Brick Veneer

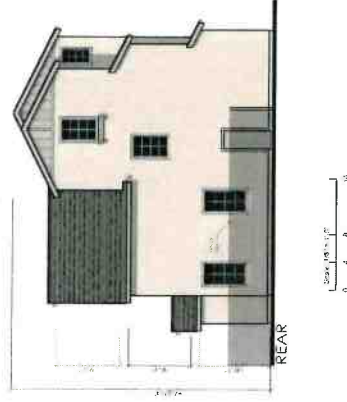


ELEVATION '3AX'  
 color scheme 1

Scale 1/8" = 1'-0"



LEFT



REAR



RIGHT



Architecture + Planning  
 622 455 5649  
 ktp.com



COMPASS BAY  
 Newark, Ca # 2017-0147

SCHEMATIC DESIGN  
 06-07-2018

EXHIBIT B p38

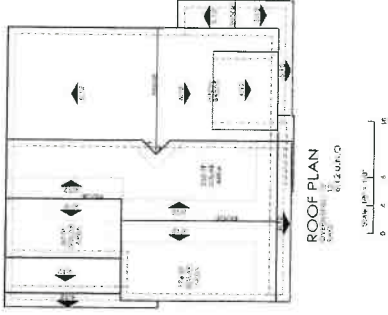


EXTERIOR ELEVATIONS  
 PLAN 3AX  
 A3.2X

- 3BX  
 Material Legend:  
 Arch. Grade Composition Shingle  
 Stucco Finish  
 Cementitious Board and Bath Siding  
 Decorative Kicker / Corbel  
 Enhanced Sills  
 1x Stucco Finish Trim  
 Stone Veneer



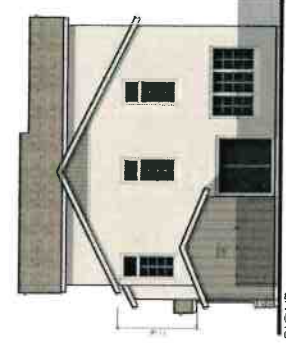
ELEVATION '3BX'  
 color scheme 5



LEFT



REAR



RIGHT



Architecture & Planning  
 888-405-3549  
 ktp.com

THINKWORK HOMES

COMPASS BAY  
 Newark, Ca # 2017-0147

SCHEMATIC DESIGN  
 06-07-2018



EXTERIOR ELEVATIONS  
 PLAN 3BX

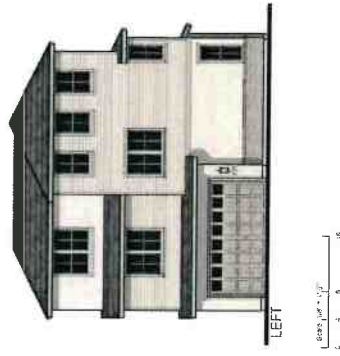
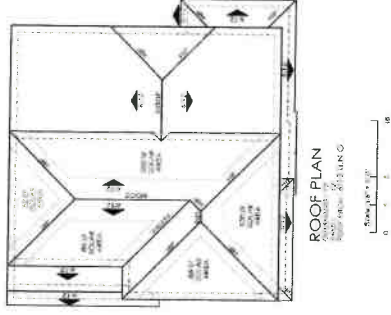
EXHIBIT B p39

A3.3X

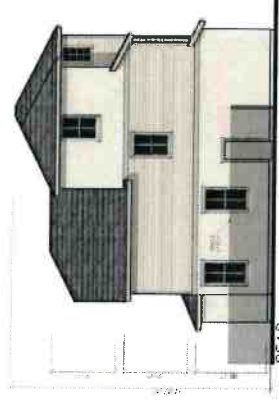
- 3CX  
 Material Legend:  
 Arch. Grade Composition Shingle  
 Stucco Finish  
 Cementitious Siding  
 Shutters  
 Decorative Kicker / Corbel  
 Enhanced Sills  
 1x Stucco Finish Trim  
 Brick Veneer



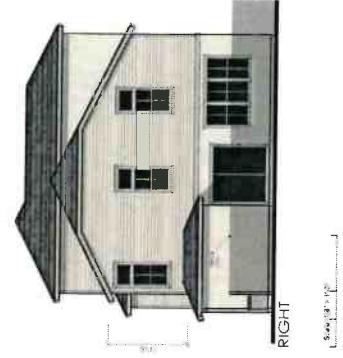
ELEVATION '3CX'  
 color scheme 9



LEFT



REAR



RIGHT



Architectural Rendering  
 4800 15th Street  
 XBY.com

TRULINK ARCHITECTURE

COMPASS BAY  
 Newhall, Ca # 2017-0747

SCHEMATIC DESIGN  
 06/07/2016

EXHIBIT B p40

EXTERIOR ELEVATIONS  
 PLAN 3CX



A3.4X



	A				B				C			
	1	2	3	4	5	6	7	8	9	10	11	12
ROOF MATERIAL COMPOSITION SHINGLE	GEORGETOWN GREY	GEORGETOWN GREY	WEATHERWOOD	WEATHERWOOD	SUNBURY CEDAR	SUNBURY CEDAR	BIRCHWOOD	BIRCHWOOD	MAJORE BLACK	MAJORE BLACK	THUNDER GREY	THUNDER GREY
STUCCO BODY	H.S. 4915 EAST WHITE	KM4501 MAD POTS	KM4578 FEATHER STONE	KM4608 ABBEY BRIND	KM4744 ALGASTER BEAUTY	KM4841 CITY DWELLER	KM4889 GRAN SPILL	KM4927 PLUME SPASS	H.S. 5104 SNOW GLOBE	KM4957 ROSE OYSTER	KM4996 CLEAN	KM4999 ANTOBE WHITE
FASCIA 3/8" FIRM CARGUE EXOR	KM4999 GRAY SPILL	KM4705 FRESH LINEN	H.S. 4304 SNOW GLOBE	KM4709 ANTOBE WHITE	KM4795 COUNTRY CLUR	KM4845 FEATHER WHITE	KM4912 WATER SOL STICE	KM4910 ANHUJOMAN FOREST	KM4949 ANTOBE WHITE	KM4959 MUSHY MOUSE	KM4984 WINTERS PARK	KM4984 KNOTTING VERANDA
GABLE RISBETS	KM4989 GRAY BELL	KM4917 TRELLISED IVY	KM4972 COBBLSTONE STREET	KM4972 COBBLSTONE STREET	KM4909 ANTOBE WHITE	KM4915 WHITEST WHITE	KM4929 WHISKERS	KM4931 BLACK ICE	KM4933 YOLCANO HOOK	KM4959 MAMA DALOUK	KM4943 WHITEST WHITE	KM4941 WHITEST WHITE
SHUTTER/DISHBET	KM4914 KING DRESS FALLS	KM4979 CHEQUINE CANYON	KM4947 PLATINUM GRANITE	KM4947 PLATINUM GRANITE	KM4910 SEA PINE	KM4913 WHITEST WHITE	KM4931 BLACK ICE	KM4931 BLACK ICE	KM4949 ANTOBE WHITE	KM4959 ANTOBE WHITE	KM4943 WHITEST WHITE	KM4941 WHITEST WHITE
FRONT DOOR	KM4419 GLOBEJUST	KM4904 BALSAMIC REDUCTION	KM4944 KNOTTING VERANDA	H.S. 4587 BONGHAM PRICOT	H.S. 5169 TOBY PATTON	KM4915 WHITEST WHITE	KM4913 WHITEST WHITE	KM4931 BLACK ICE	KM4949 ANTOBE WHITE	KM4959 ANTOBE WHITE	KM4943 WHITEST WHITE	KM4941 WHITEST WHITE
BRICK	LATIGO	HORSIE	ASHLAND	CLAY ROSET	BOARDWALK CLIFFSTONE	WHITE BARK CLIFFSTONE	DAVID BREAK STACKED	ALDERWOOD STACKED STONE	H.S. 5104 SNOW GLOBE	KM4519 FERRIS COPPER	H.S. 4988 BELLE MARLETT	KM4706 BONNET BENCH



PLAN 3R - ALT

PLAN 2R

PLAN 3R

ELEVATION - '3 PLEX'

- 3 Plex  
 Material Legend:  
 Arch. Grade Composition Shingle  
 Stucco Finish  
 Cementitious Board and Bolt Siding  
 Cementitious Siding  
 Decorative Kicker / Corbel  
 Enhanced Sills  
 1x Stucco Finish Trim  
 Brick Veneer



Architecture • Planning  
 800.455.5069  
 kitgy.com



COMPASS BAY  
 NEWARK, CALIFORNIA

#2017-047

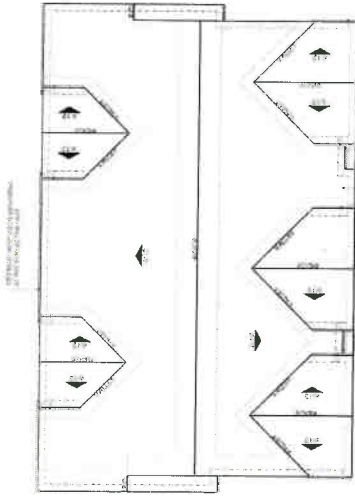
SCHEMATIC DESIGN  
 06-07-2018



EXHIBIT B p42

3 - PLEX EXTERIOR ELEVATIONS  
 FRONT ELEVATION

A1.0



ROOF PLAN  
 1/2" = 1'-0" (VERTICAL)  
 1/8" = 1'-0" (HORIZONTAL)

NOTE: ROOF AREA SQ. FT. = 3060 X 15% = 459 SQ. FT. SOLAR ZONE



REAR PLAN 3R - ALT

PLAN 2

PLAN 3R



LEFT



RIGHT

- 3 Plex  
 Material Legend:  
 Arch. Grade Composition Shingle  
 Stucco Finish  
 Cementitious Board and Batt Siding  
 Cementitious Siding  
 Decorative Kicker / Corbel  
 Wood Siding  
 Enhanced Sills  
 1x Stucco Finish Trim  
 Brick Veneer

**EXHIBIT B p43**

**ktgy**  
 Architecture + Planning  
 1015 S. 5th St.  
 Los Angeles, CA 90012

**TRUMARK HOMES**

**COMPASS BAY**  
 NEWARK, CALIFORNIA

#2017-0147

**SCHEMATIC DESIGN**  
 06/07/2018



**3 - PLEX EXTERIOR ELEVATIONS**  
 EXTERIOR ELEVATIONS

**A1.1**



PLAN 3R - ALT

PLAN 2

PLAN 1

PLAN 3

ELEVATION - '4 PLEX'

- 4 Plex  
 Material Legend:  
 Arch. Grade Composition Shingle  
 Stucco Finish  
 Cementitious Board and Ball Siding  
 Cementitious Siding  
 Decorative Kicker / Corbel  
 Enhanced Sills  
 1x Stucco Finish Trim



Architecture • Planning  
 888.448.5646  
 ktgy.com



COMPASS BAY  
 NEWARK CALIFORNIA

#2017-0147

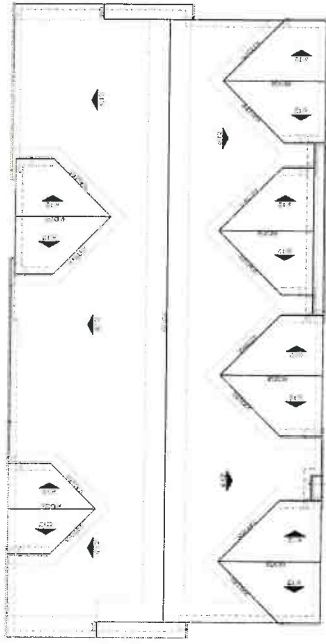
SCHEMATIC DESIGN  
 08.07.2018



4 - PLEX EXTERIOR ELEVATIONS  
 FRONT ELEVATION

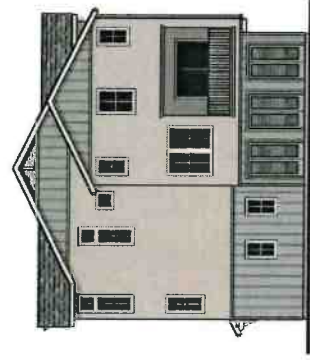
EXHIBIT B p44

USE MATERIALS AND FINISHES  
AS SHOWN ON SHEET



ROOF PLAN  
574' AREA OF  
SOLAR ZONE

NOTE: ROOF AREA SQ. FT. = 3964 X 15% = 595 SQ. FT. SOLAR ZONE



- 4 Plex  
Material Legend:  
Arch. Grade Composition Shingle  
Stucco Finish  
Cementitious board and Batt Siding  
Cementitious Siding  
Decorative Kicker / Corbel  
Wood Railing  
Enhanced Sills  
1x Stucco Finish Trim

ARCHITECTURE • PLANNING  
888.455.3669  
kgj.com



TRUMARK HOMES

COMPASS BAY  
NEWARK, CALIFORNIA

#2017-0147

SCHEMATIC DESIGN  
08-07-2016



EXHIBIT B p45

4 - PLEX EXTERIOR ELEVATIONS  
EXTERIOR ELEVATIONS  
A1.3



PLAN 3R - ALT

PLAN 2

PLAN 1

PLAN 2

PLAN 3

### ELEVATION - '5 PLEX'

- 5 Plex
- Material Legend:
- Arch. Grade Composition Shingle
- Stucco Finish
- Cementitious Board and Batt Siding
- Cementitious Siding
- Decorative Kicker / Corbel
- Enhanced Sills
- 1x Stucco Finish Trim



Architecture • Planning  
951.455.5649  
ktgy.com



COMPASS BAY  
NEWARK, CALIFORNIA

#2017-0147

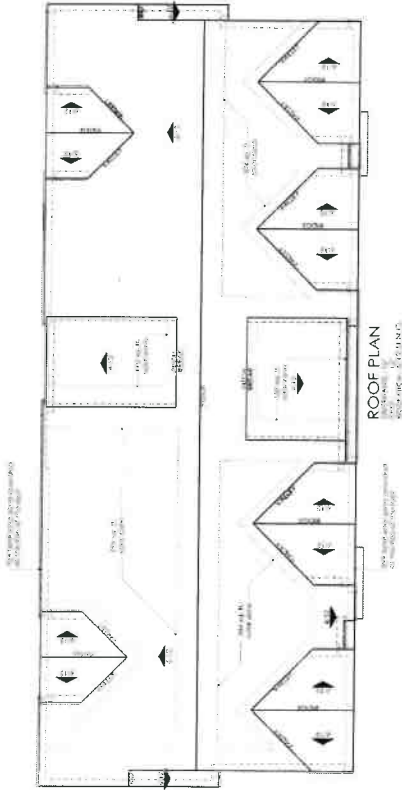
SCHEMATIC DESIGN  
06-07-2018



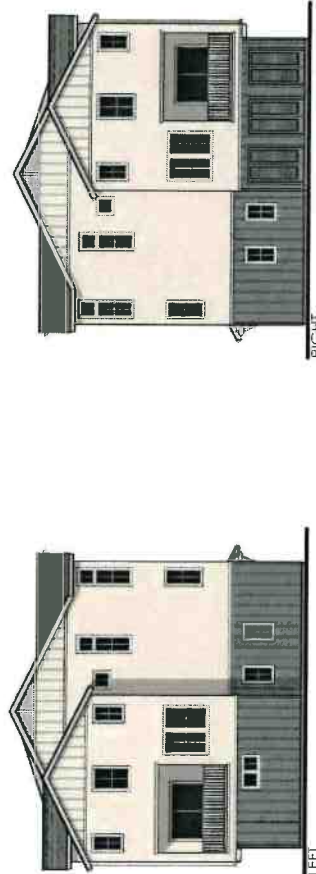
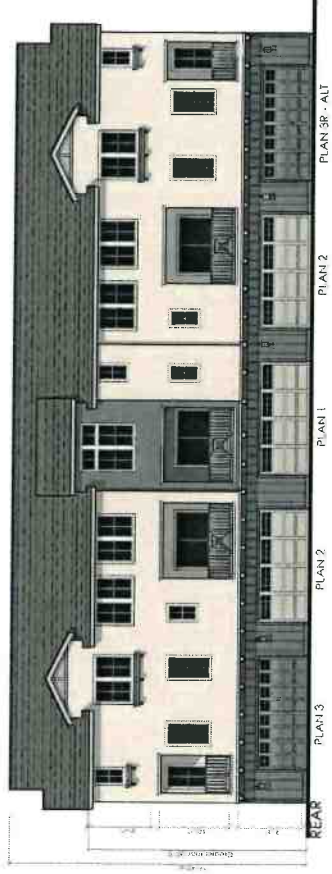
5 - PLEX EXTERIOR ELEVATIONS  
FRONT ELEVATION

EXHIBIT B p46

A1.4



NOTE: ROOF AREA SQ. FT. = 4916 X 15% = 737 SQ. FT. SOLAR ZONE



- 5 PLEX  
 Material Legend:  
 Arch. Grade Composition Shingle  
 Stucco Finish  
 Cementitious Board and Batt Siding  
 Cementitious Siding  
 Decorative Kicker / Corbel  
 Wood Railing  
 Enhanced Sills  
 1x Stucco Finish Trim

EXHIBIT B p47

ARCHITECTURE • PLANNING  
 800.455.5649  
 ngr.com

TRUMARK HOMES

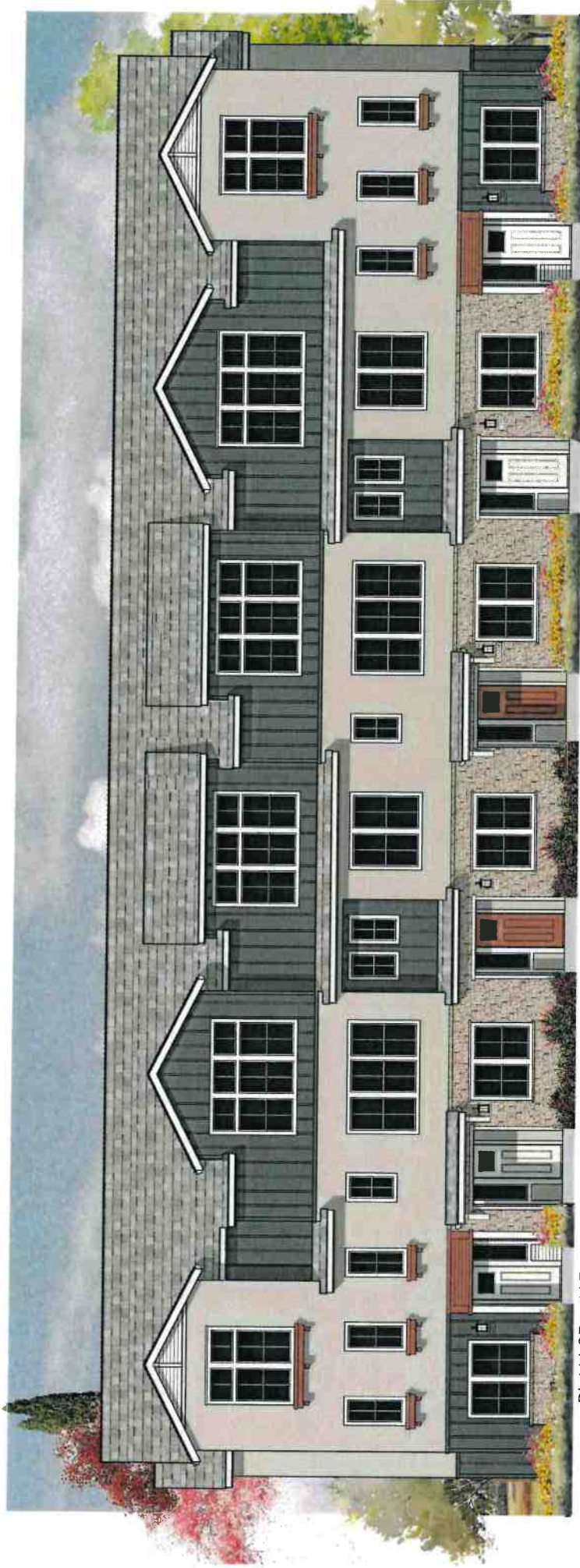
COMPASS BAY  
 NEWARK, CALIFORNIA

#2017-0147

SCHEMATIC DESIGN  
 06-07-2018



5 - PLEX EXTERIOR ELEVATIONS  
 EXTERIOR ELEVATIONS  
 A1.5



PLAN 3R - ALT

PLAN 2

PLAN 1

PLAN 2

PLAN 1

PLAN 3

ELEVATION - '6 PLEX'

- 6 Plex
- Material Legend:
- Arch. Grade Composition Shingle
- Stucco Finish
- Cementitious Board and Batt Siding
- Stone Veneer
- Decorative Kicker / Corbel
- Enhanced Sills
- 1x Stucco Finish Trim



Architecture + Planning  
888.466.8460  
ktgy.com



COMPASS BAY  
NEWARK, CALIFORNIA

#2017-0147

SCHEMATIC DESIGN  
06-07-2016

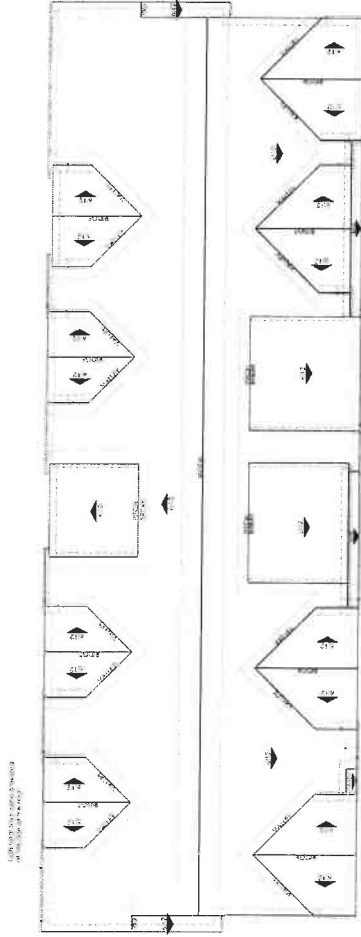


EXHIBIT B p48

6 - PLEX ELEVATIONS  
FRONT ELEVATION

A1.6





ROOF PLAN  
 1/4" = 1'-0" (VERTICAL)  
 1/8" = 1'-0" (HORIZONTAL)

MAINTENANCE ROOMS ARE NOT TO BE USED FOR STORAGE

NOTE:

ROOF AREA SQ. FT. = 5962 X 1.5% = 894 SQ. FT. SOLAR ZONE



- 6 Plex  
 Material Legend:  
 Arch. Grade Composition Shingle  
 Stucco Finish  
 Cementitious Board and Batt Siding  
 Cementitious Siding  
 Decorative Kicker / Corbel  
 Wood Railing  
 Enhanced Sills  
 1x Stucco Finish Trim



Architecture • Planning  
 855.425.5649  
 ktgy.com

TRUMARK HOMES

COMPASS BAY  
 NEWARK, CALIFORNIA

#20172147

SCHEMATIC DESIGN  
 08-07-2018



EXHIBIT B p49

6 - PLEX EXTERIOR ELEVATIONS  
 EXTERIOR ELEVATIONS

A1.7



ELEVATION - '7 PLEX'  
SCALE = 3/16" = 1'-0"



Architectural Planning  
880 455 3849  
ktgy.com



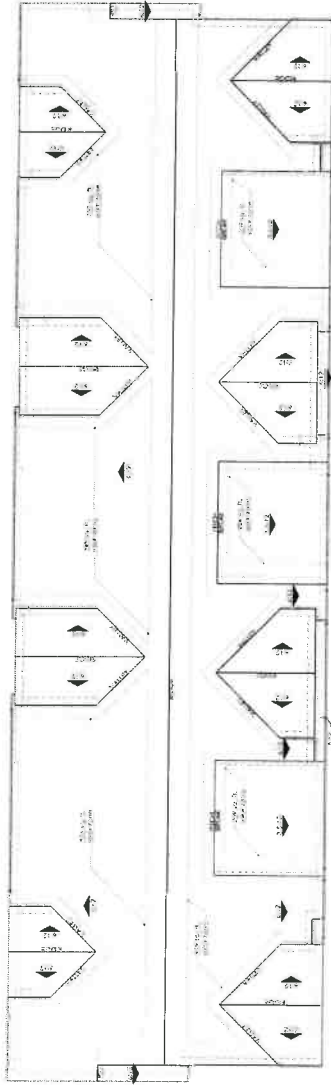
COMPASS BAY  
NEWARK, CALIFORNIA

#2017.0147

SCHEMATIC DESIGN  
08.01.2018



EXHIBIT B p50  
7 - PLEX ELEVATIONS  
FRONT ELEVATION  
A1.8



ROOF PLAN  
 0.00' x 11.25' x 11.25' x 11.25' x 11.25'

NOTE:

ROOF AREA SQ. FT. = 6868 X 15% = 1030 SQ. FT. SOLAR ZONE



- 7 Plex  
 Material Legend:  
 Arch. Grade Composition Shingle  
 Stucco Finish  
 Cementitious Board and Bath Siding  
 Cementitious Siding  
 Decorative Kicker / Corbel  
 Wood Railing  
 Enhanced Sills  
 1x Stucco Finish Trim

EXHIBIT B p51

SCHEMATIC DESIGN  
 08-27-2018

COMPASS BAY  
 Newark, CA  
 4/2017/0147

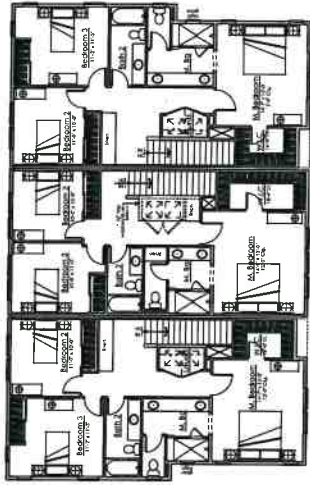
TRUMARK HOMES

A1.9

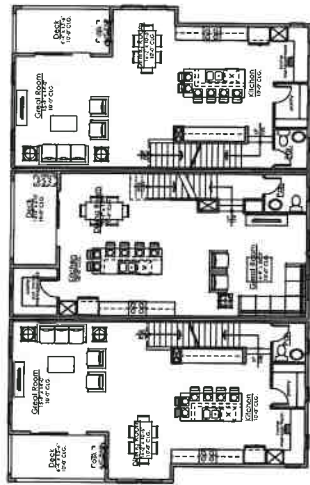
7 - PLEX EXTERIOR ELEVATIONS  
 EXTERIOR ELEVATIONS



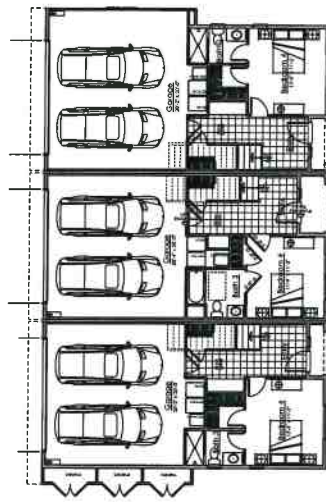
ktgy  
 Architecture + Planning  
 888.456.5666  
 ktgy.com



Third Floor



Second Floor



First Floor



Architecture • Planning  
688.426.6648  
ktgy.com



COMPASS BAY  
NEWARK, CALIFORNIA

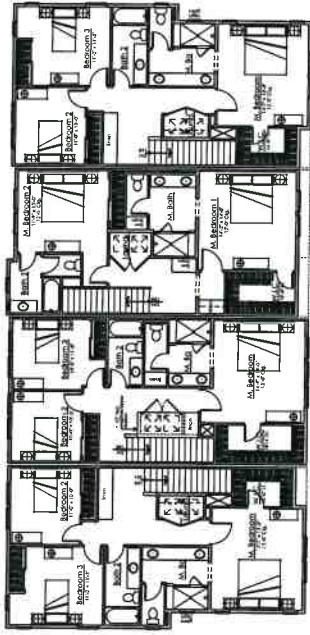
#2017-0147

SCHEMATIC DESIGN  
08-07-2018

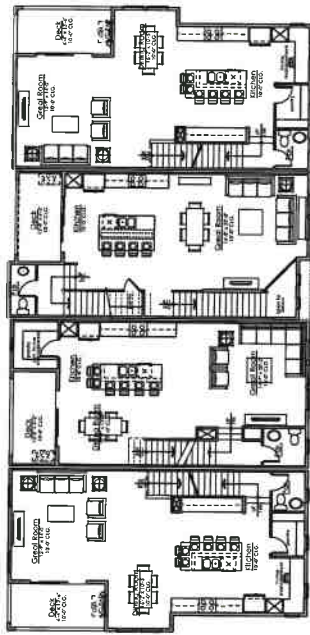


EXHIBIT B p52

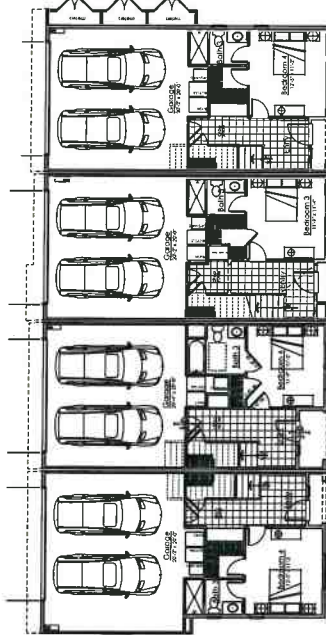
3-PLEX BLDG  
FLOOR PLAN  
A1.10



PLAN 3R - ALT PLAN 2 PLAN 1 PLAN 3  
Third Floor



PLAN 3R - ALT PLAN 2 PLAN 1 PLAN 3  
Second Floor



PLAN 3R - ALT PLAN 2 PLAN 1 PLAN 3  
First Floor



Architecture • Planning  
588.658.8849  
ktgy.com



COMPASS BAY  
NEWARK, CALIFORNIA

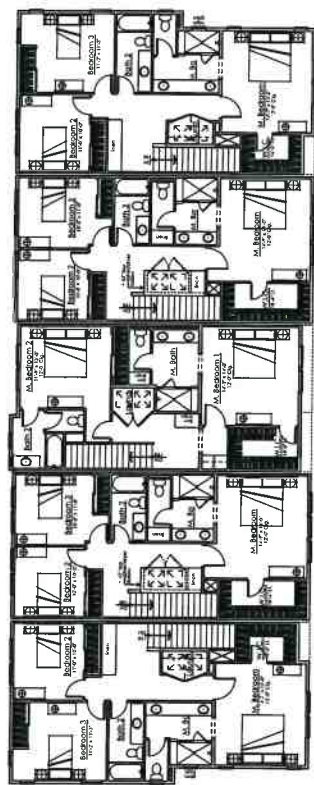
#2017-0147

SCHEMATIC DESIGN  
08-07-2018

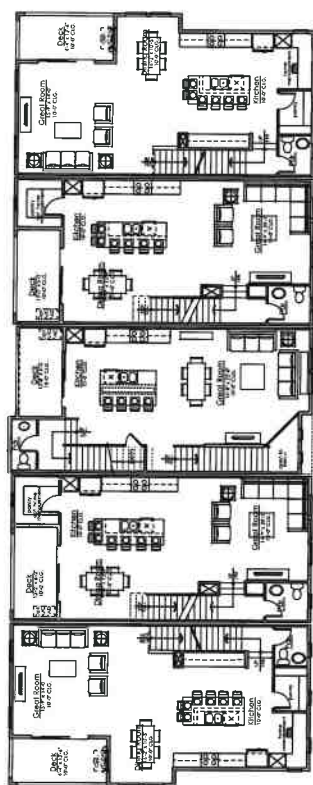


EXHIBIT B p53

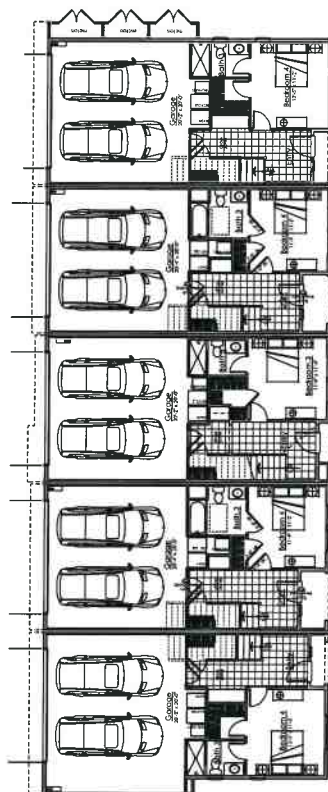
4-PLEX BLDG  
FLOOR PLAN  
A1.11



Third Floor



Second Floor



First Floor

Architecture • Planning  
888-456-5649  
ktp.com



COMPASS BAY  
NEWARK, CALIFORNIA

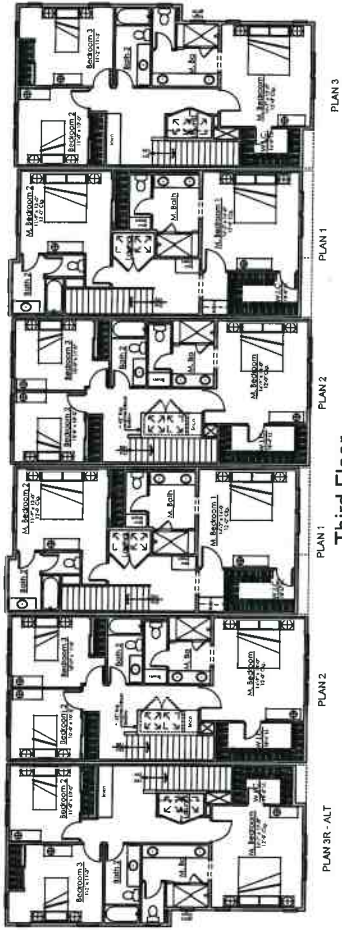
#2017-0447

SCHEMATIC DESIGN  
08-07-2018

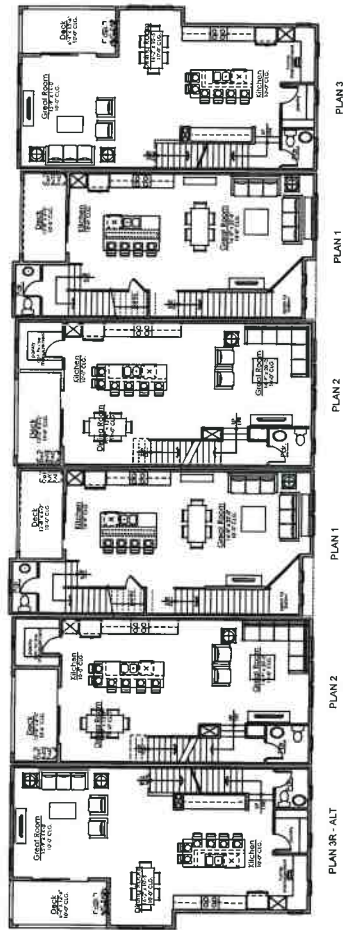


EXHIBIT B p54

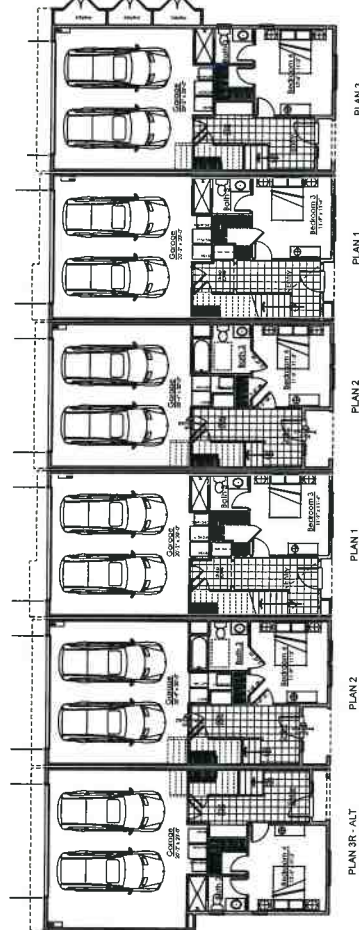
5-PLEX BLDG  
FLOOR PLAN  
A1.12



Third Floor



Second Floor



First Floor

EXHIBIT B p55

6-PLEX BLDG FLOOR PLAN A1.13

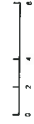
TRUMARK HOMES

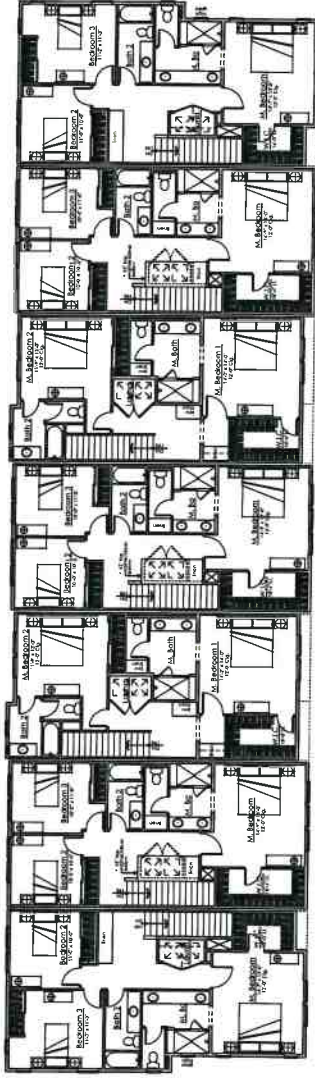
Architecture • Planning  
800.451.5600  
ktgy.com

COMPASS BAY  
NEWARK, CALIFORNIA

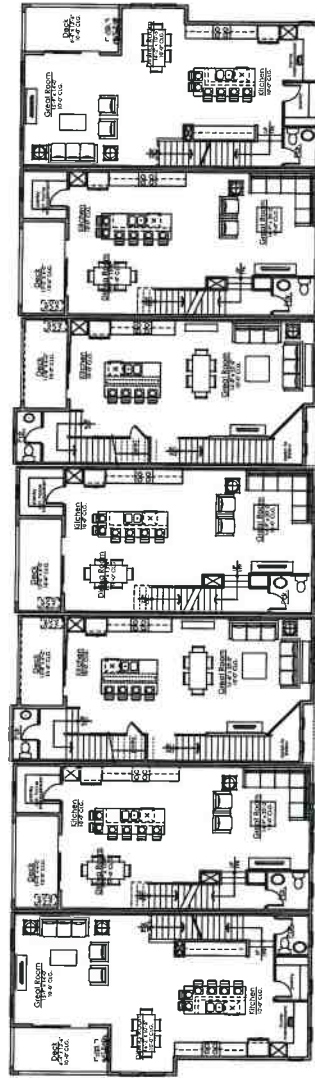
#2017-0147

SCHEMATIC DESIGN  
08-07-2015

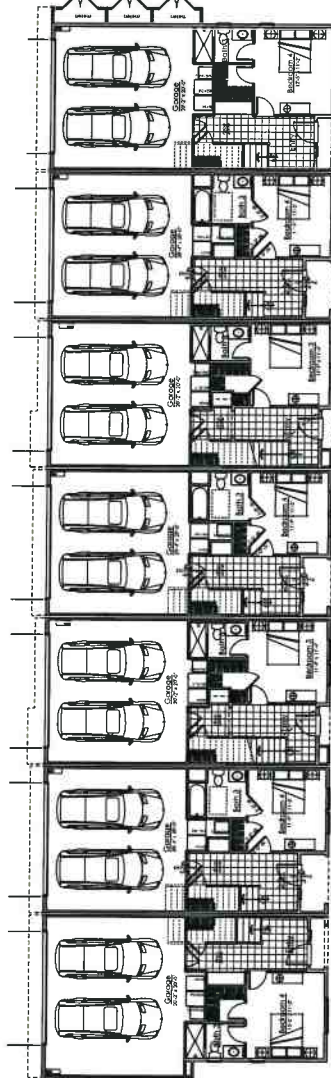




Third Floor



Second Floor



First Floor



SCHEMATIC DESIGN  
08-07-2018

#0017-0147

COMPASS BAY  
NEWARK, CALIFORNIA



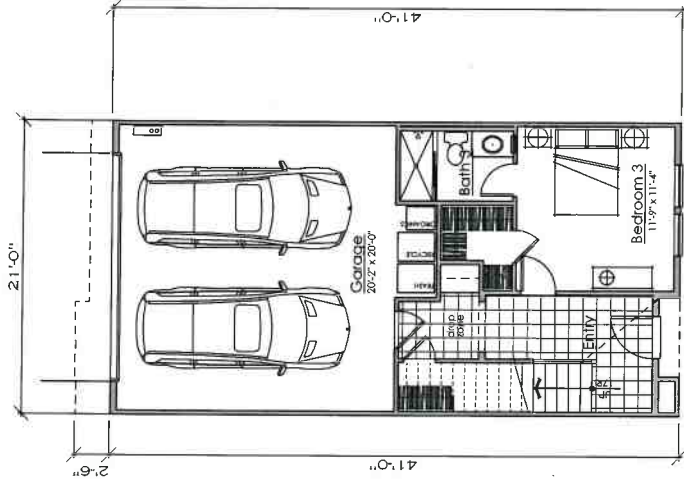
Architecture + Planning  
305.585.8850  
889.com

EXHIBIT B p56

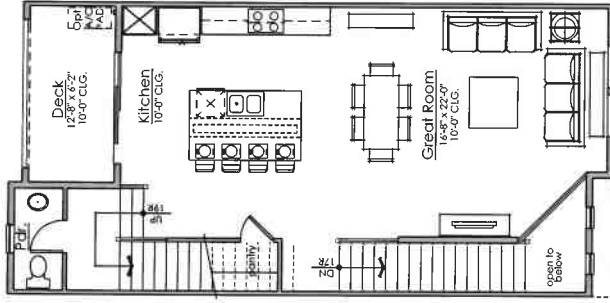
7-PLEX BLDG  
FLOOR PLAN  
A1.14



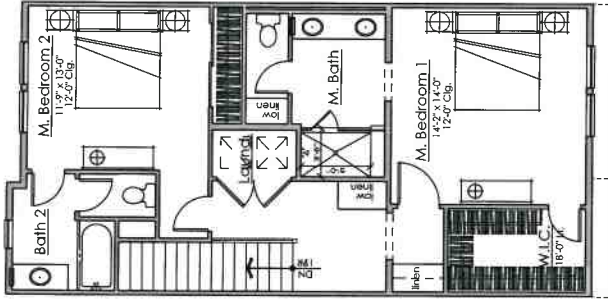




First Floor  
377 Net Sq. Ft.



Second Floor  
704 Net Sq. Ft.



Third Floor  
804 Net Sq. Ft.

EXHIBIT B p57

PLAN 1  
FLOOR PLAN  
**A1.15**

3 Bedroom  
3.5 Bath  
1885 Net Sq. Ft.



SCHEMATIC DESIGN  
08-07-2018

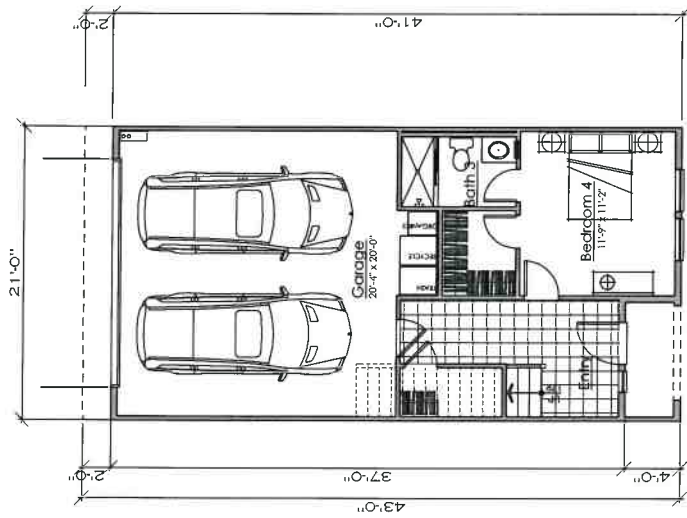
#2017-0147

COMPASS BAY  
NEWARK, CALIFORNIA

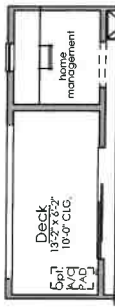
TRUMARK HOMES

Architecture • Planning  
888.455.5848  
ktr.com

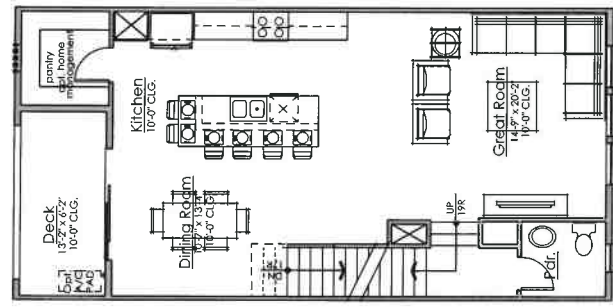




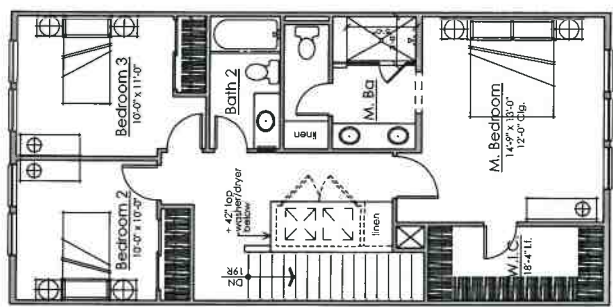
First Floor  
357 Net Sq. Ft.



Optional Home Management



Second Floor  
787 Net Sq. Ft.



Third Floor  
824 Net Sq. Ft.

EXHIBIT B p58

PLAN 2  
FLOOR PLAN  
A1.16

4 Bedroom  
3.5 Bath  
1968 Net Sq. Ft.



SCHEMATIC DESIGN  
08-07-2018

#2017-0147

COMPASS BAY  
NEWARK, CALIFORNIA

TRUMARK HOMES

Architects + Planning  
888.466.2840  
ksp.com





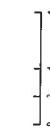
Architecture • Planning  
688.656.8416  
ktgy.com



COMPASS BAY  
NEWARK, CALIFORNIA

#2017-0147

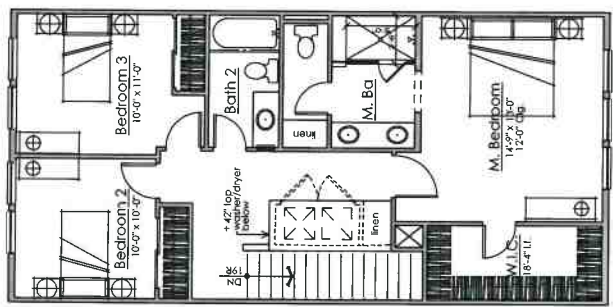
SCHEMATIC DESIGN  
08-07-2018



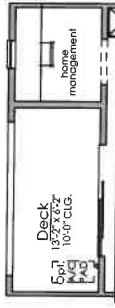
4 Bedroom  
3.5 Bath  
1965 Net Sq. Ft.

EXHIBIT B p59

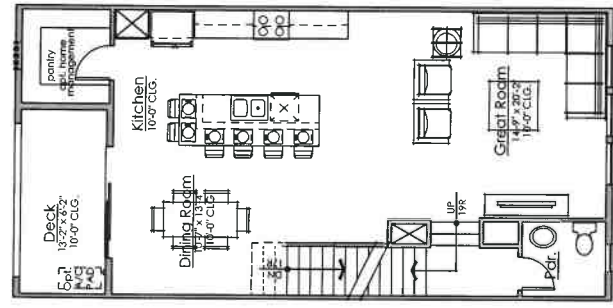
PLAN 2A  
FLOOR PLAN  
A1.17



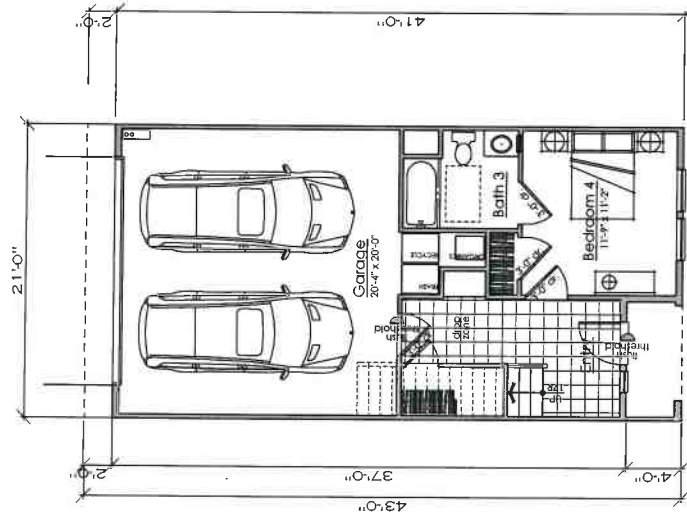
Third Floor  
824 Net Sq. Ft.



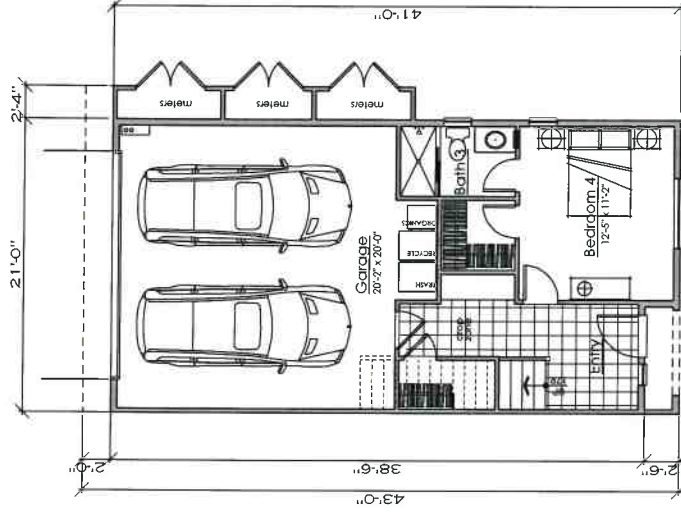
Optional Home Management



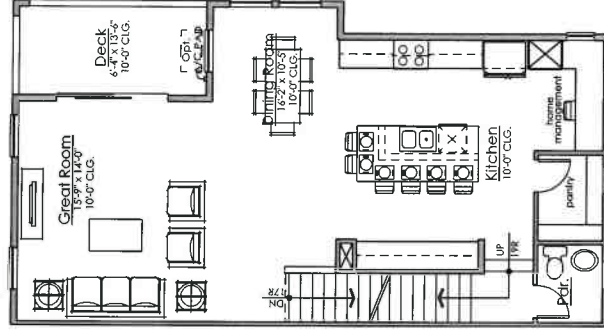
Second Floor  
787 Net Sq. Ft.



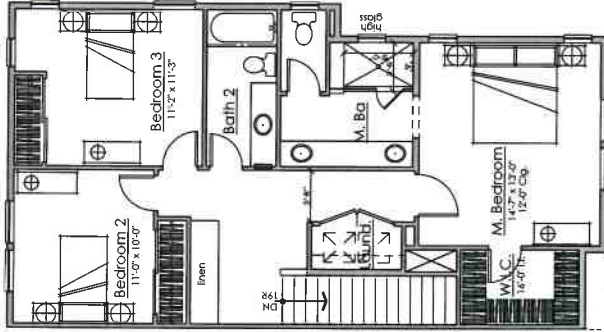
First Floor- Accessible Unit  
354 Net Sq. Ft.



First Floor- End Unit  
366 Net Sq. Ft.



Second Floor- End Unit  
835 Net Sq. Ft.



Third Floor- End Unit  
859 Net Sq. Ft.

4 Bedroom  
3.5 Bath  
2060 Net Sq. Ft.



SCHEMATIC DESIGN  
08-07-2018

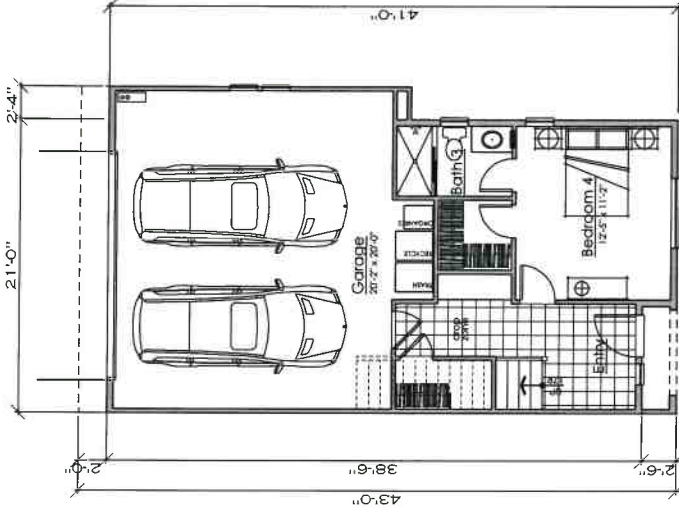
#2017-0147

COMPASS BAY  
NEWARK, CALIFORNIA

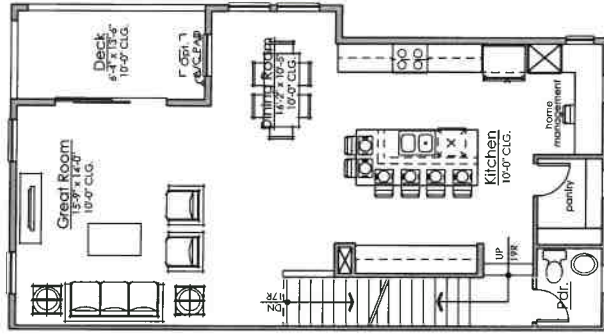
TRUMARK HOMES

Architects • Planning  
688 455 5849  
ktgy.com

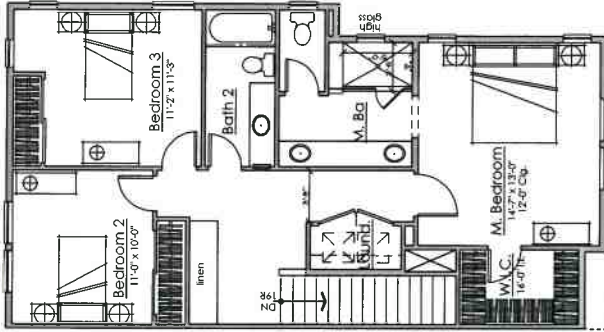




First Floor- End Unit  
366 Net Sq. Ft.



Second Floor- End Unit  
835 Net Sq. Ft.



Third Floor- End Unit  
859 Net Sq. Ft.

EXHIBIT B p61

4 Bedroom  
3.5 Bath  
2060 Net Sq. Ft.



SCHEMATIC DESIGN  
08-07-2018

#2017-0147

COMPASS BAY  
NEWARK, CALIFORNIA

TRUMARK HOMES

Architecture • Planning  
888-456-8949  
ktgy.com



4 & 5 PLEX  
1 2 3 4

6 PLEX  
5 7

3 & 7 PLEX  
11

ROOF MATERIAL COMPOSITION SHINGLE	GEORGETOWN GREY	WEATHERWOOD	WEATHERWOOD	WEATHERWOOD	BRICKWOOD	BRICKWOOD
STUCCO BODY AND FLOOR BATTEN & TRIM	KM4000 DUSTY WHITE	KM4000 MUD POTS	KM4004 FEATHER STONE	KM4004 AMBER ROAD	KM4002 GRAY SPELL	KM4002 GRAY SPELL
FASCIAD GARAGE DOOR	KM4004 FRESH LIXEN	KM4004 SNOW GLOBE	KM4004 ANTIQUE WHITE	KM4009 COUNTRY CLUB	KM4009 ANTIQUE WHITE	KM4009 ANTIQUE WHITE
GARLE INSET S	KM4009 GRAY SPELL	KM4009 FRESH LIXEN	KM4009 TRELLED WY	KM4009 COBBLESTONE STREET	KM4009 WHITES WHITE	KM4009 WHITES WHITE
1ST FLOOR BATTEN	KM4014 INDIAN FALLS	KM4014 GORPINE CANYON	KM4017 TRELLED WY	KM4017 COBBLESTONE STREET	KM4013 WHITES WHITE	KM4013 WHITES WHITE
BATTERY POTTSHELF	KM4014 INDIAN FALLS	KM4014 GORPINE CANYON	KM4017 MISSISSIPPI RIVER	KM4017 PLATINUM GRANITE	KM4013 WHITES WHITE	KM4013 WHITES WHITE
FRONT DOOR	KM4019 CLOVEDUST	KM4019 BALSAM REDUCTION	KM4044 IMITING VERANEA	KM4044 PLATINUM GRANITE	KM4043 BRICK	KM4043 BRICK
ROOF MATERIAL COMPOSITION SHINGLE	BRICKWOOD	BRICKWOOD	BRICKWOOD	BRICKWOOD	BRICKWOOD	BRICKWOOD
STUCCO BATTEN WINDOWS	KM4002 AUGUST BEAUTY	KM4002 AUGUST BEAUTY	KM4002 AUGUST BEAUTY	KM4002 AUGUST BEAUTY	KM4002 AUGUST BEAUTY	KM4002 AUGUST BEAUTY
BATTEN WINDOWS CORNER BOARDS 4" H	KM4009 COUNTRY CLUB	KM4009 COUNTRY CLUB	KM4009 COUNTRY CLUB	KM4009 COUNTRY CLUB	KM4009 COUNTRY CLUB	KM4009 COUNTRY CLUB
FASCIAD BATTEN WINDOW DOOR	KM4009 ANTIQUE WHITE	KM4009 ANTIQUE WHITE	KM4009 ANTIQUE WHITE	KM4009 ANTIQUE WHITE	KM4009 ANTIQUE WHITE	KM4009 ANTIQUE WHITE
FRONT DOOR	KM4013 WHITES WHITE	KM4013 WHITES WHITE	KM4013 WHITES WHITE	KM4013 WHITES WHITE	KM4013 WHITES WHITE	KM4013 WHITES WHITE
STONE	KM4043 BRICK	KM4043 BRICK	KM4043 BRICK	KM4043 BRICK	KM4043 BRICK	KM4043 BRICK
FRONT DOOR SHUTTERS PUTNEY	KM4043 BRICK	KM4043 BRICK	KM4043 BRICK	KM4043 BRICK	KM4043 BRICK	KM4043 BRICK
BRICK	KM4043 BRICK	KM4043 BRICK	KM4043 BRICK	KM4043 BRICK	KM4043 BRICK	KM4043 BRICK

