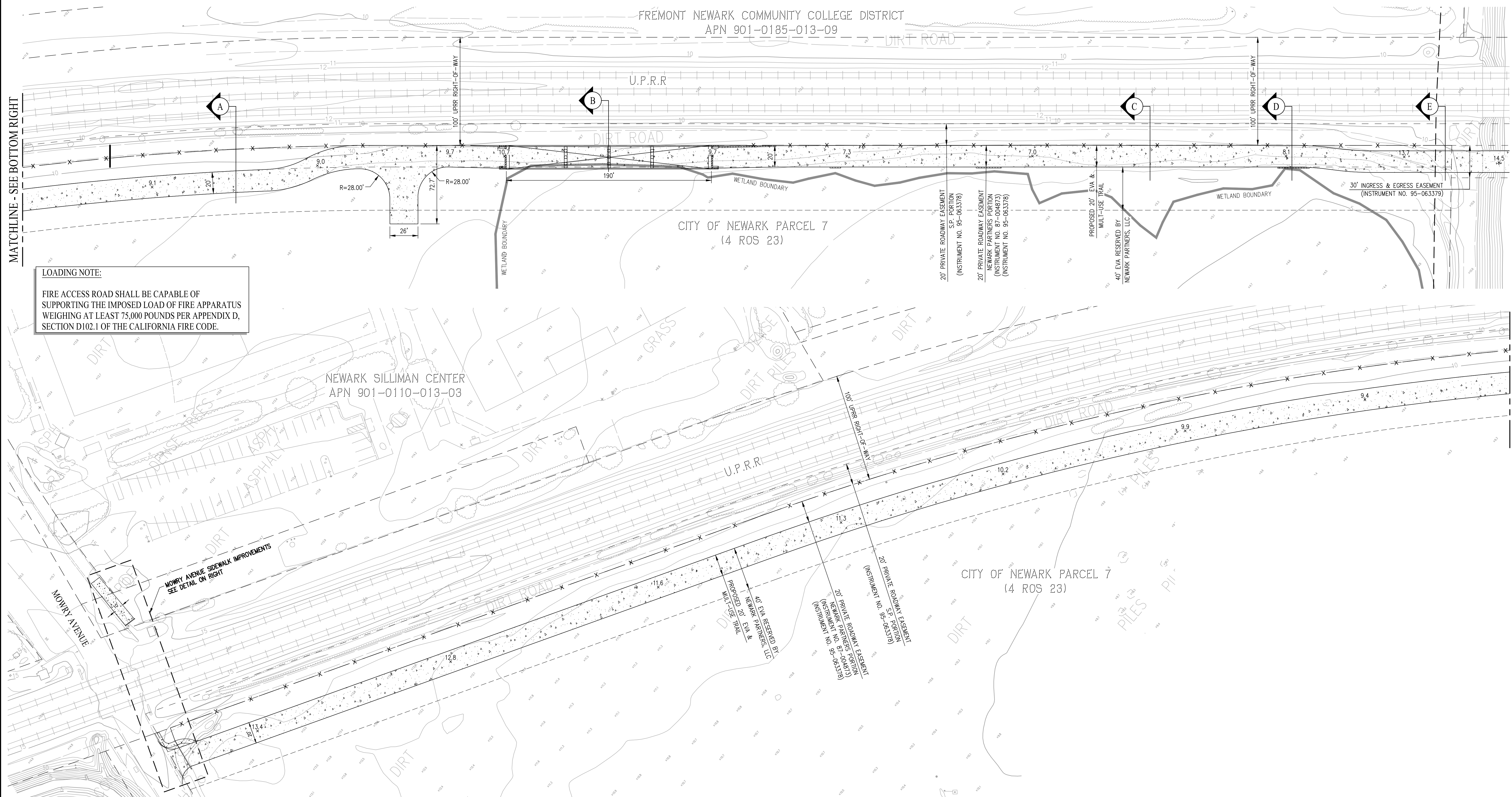
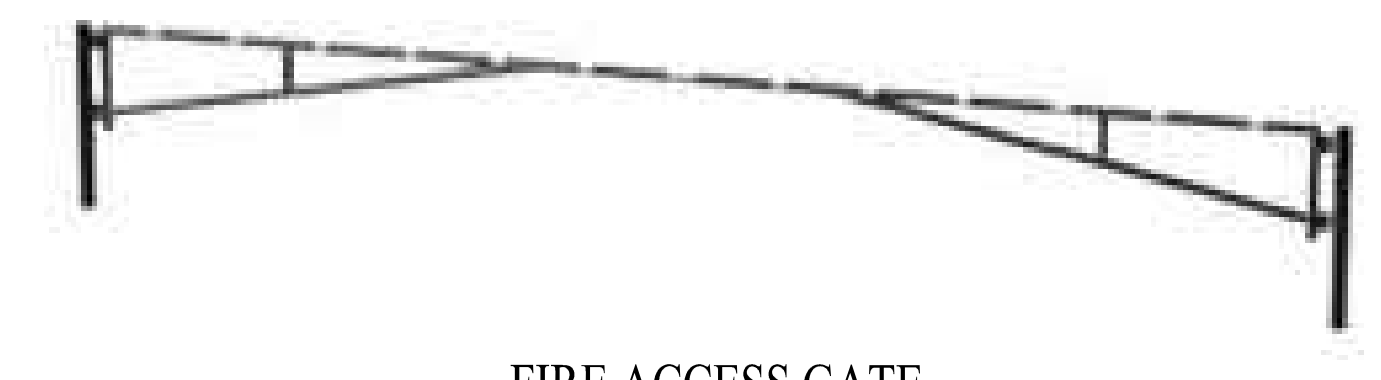


FREMONT NEWARK COMMUNITY COLLEGE DISTRICT
APN 901-0185-013-09



LOADING NOTE:
FIRE ACCESS ROAD SHALL BE CAPABLE OF SUPPORTING THE IMPOSED LOAD OF FIRE APPARATUS WEIGHING AT LEAST 75,000 POUNDS PER APPENDIX D, SECTION D102.1 OF THE CALIFORNIA FIRE CODE.



FIRE ACCESS GATE



PEDESTRIAN GATE



W10-4



R15-2P



W10-1

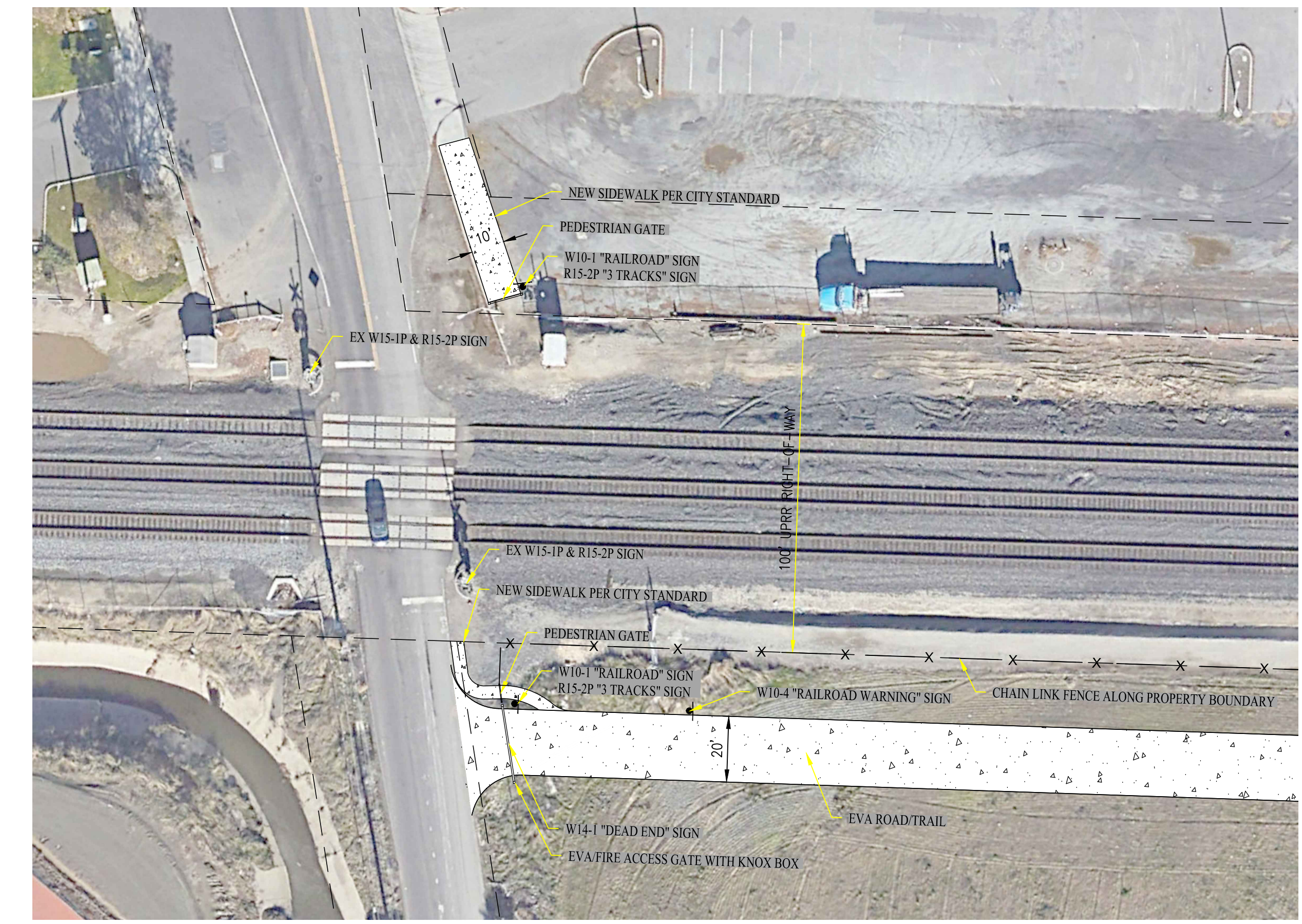
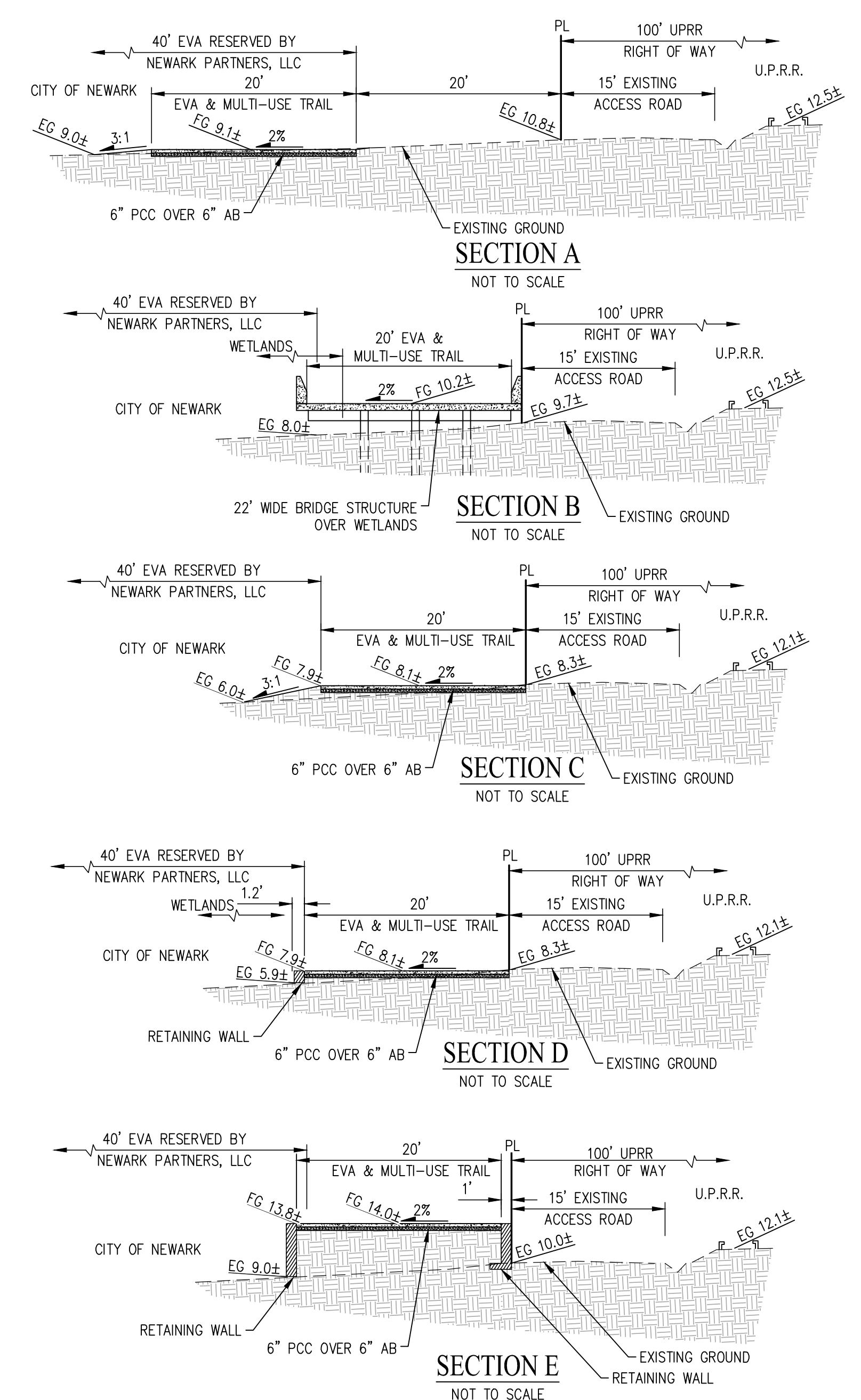


W14-1



R15-1P

SIGNAGE LEGEND

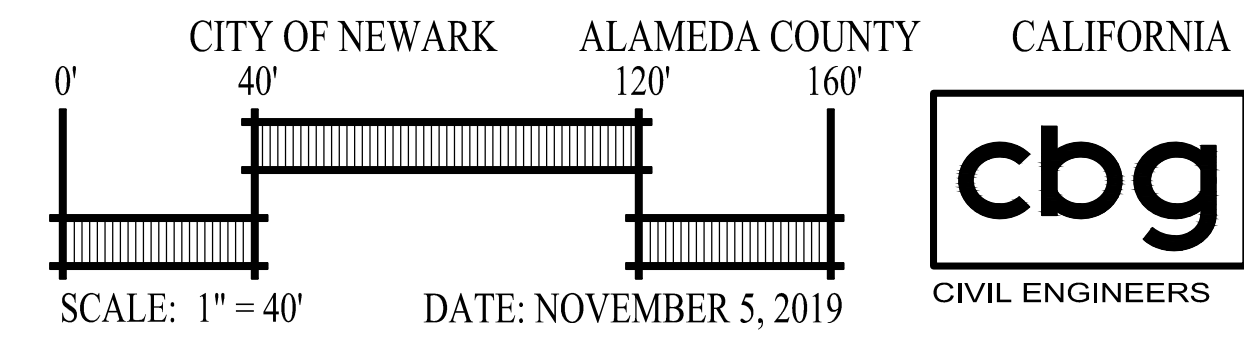
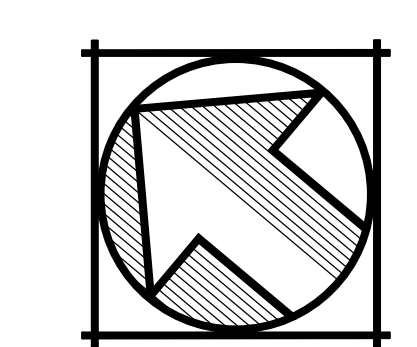


MOWRY AVENUE SIDEWALK IMPROVEMENTS
SCALE: 1" = 30'

- NOTES:**
- FIRE ACCESS/EVA GATE SHALL BE NON-MECHANICAL AND SHALL BE MANUALLY OPERATED.
 - ALL MOWRY AVENUE SIDEWALK IMPROVEMENTS SHALL BE LOCATED OUTSIDE OF UPRR RIGHT-OF-WAY.

EXHIBIT G

**EXHIBIT G
EVA/MULTI-USE TRAIL
PRELIMINARY PLAN
SANCTUARY WEST TRACT 8495**



SCALE: 1" = 40'

DATE: NOVEMBER 5, 2019



CIVIL ENGINEERS • SURVEYORS • PLANNERS

SAN RAMON • (925) 866-0322
SACRAMENTO • (916) 375-1877
WWW.CBANDG.COM