

Newark News

 Official Publication of the City of Newark, California Special COVID-19 Edition

Dear Members of our Newark Community,

The City of Newark has taken a number of steps to limit further spread of the COVID-19 virus, both amongst our workforce and within our community. This special edition of the Newark News outlines many of the measures that we have taken and provides an overview of the service level that the City is offering during these truly unprecedented times.

We encourage you to regularly check our website at www.newark.org for updated information. The circumstances related to the COVID-19 pandemic are fluid and our website will continue to be updated as this situation evolves.

We at City Hall recognize that we live in a time when anxiety levels are high. However, we want you to know that we remain committed to combating this pandemic. We are all in this situation together and we will get through this.

Sincerely,

David J. Benoun
Newark City Manager

City of Newark adopts an Urgency Ordinance enacting a temporary moratorium on evictions

Newark, CA – On March 26, the City of Newark City Council adopted an urgency ordinance enacting a temporary moratorium on evictions for non-payment of rent by residential and commercial tenants impacted by the loss of income resulting from Novel Coronavirus (COVID-19).

The intent of the ordinance is to avoid unnecessary housing and commercial displacement, mitigate economic effects on small and medium sized businesses, and to prevent housed individuals from falling into homelessness and prevent further transmission of COVID-19.

The ordinance takes effect immediately and applies to all eviction proceedings, such as notices to quit or pay rent or unlawful detainer actions served on or after the effective date of the ordinance.

A tenant must demonstrate that they suffered a substantial loss of

income due to the COVID-19 pandemic in order to establish a substantive eviction defense under the ordinance. This can be accomplished by providing supporting documentation that the landlord must keep in confidence. The ordinance does not waive the payment of rent, but rather delays an impacted tenant’s obligation to make rent payments during the period of the temporary moratorium.

The moratorium applies to residential tenants under these circumstances:

- COVID-19 illness or caring for a household or family member with COVID-19 illness
- Work closures, layoffs, job loss, a reduction in the number of compensable hours or other economic or employer impacts
- Missing work due to a minor child’s school closure, compliance with

government health authority orders, or other similarly cased reason
The moratorium applies to commercial tenants who can demonstrate income loss caused by the COVID-19 pandemic under any of the following circumstances:

- Work closures

Continued on Page 3

Inside this issue...

Community Preservation	2
Supporting our residential community	2
Supporting local businesses	2
Census 2020	2
Police Officer and community safety	3
Scam alert	3
Building Inspection and Public Works Engineering services	4
City contact numbers	4
Meal programs	5
Bulletin Board	6

Community Preservation

Community Preservation staff continues to devote substantial time and effort dedicated to understanding, interpreting, and enforcing the provisions of the March 31, 2020 Alameda County Health Order (the Order), which established a “Shelter in Place” until May 3, 2020. The City’s two Community Preservation Officers, Patricia Montejano and Shama Khan, are proactively enforcing the Order. They canvass the City on a regular basis to assess compliance. Community Preservation staff have had numerous contacts with Newark businesses to assess compliance. Most of these businesses have ceased or adjusted their operations. Some businesses are operating as essential businesses that support other essential businesses. Community Preservation staff will

continue to monitor business activity and, as necessary, adjust practices to promote further compliance. If you see a business that may not be complying with the order, please email planning@newark.org or call (510) 578-4330.



Supporting our residential community

Staff has compiled information on helpful resources for our residential community that is posted to the City’s website at www.newark.org under COVID-19 (located at the top of the homepage). Resources include services provided

by the Salvation Army, Abode Services, and Catholic Charities of the East Bay. Please visit the website for more information and learn how to apply for the various support programs in our community.

Supporting local businesses

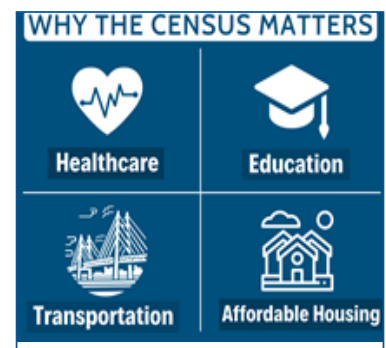
The City is aware of the substantial impact the pandemic has had on local businesses. Under the existing “Shelter in Place” order, many of our businesses are considered “non-essential” and those businesses that are defined as “essential” under the Order, are limited to providing carry-out or delivery service, and must abide by strict social distancing requirements. As a result, even those “essential” businesses are experiencing a decrease in business. The City is making business support information available in a number of ways. On the City’s Facebook page, the City has encouraged the community to shop locally and identified grocery stores with special operating hours

to accommodate older residents and those with disabilities. Staff has completed a website (<https://sites.google.com/view/city-of-newark-california/home>) containing a list of open Newark businesses that would be a “one-stop-shop” for Newark products and services. In addition, staff has compiled various business resources, such as information on Small Business Administration loan programs, on the City’s COVID-19 website. As more resources become available the City will work with our partners and the community to promote those resources and give our business community a chance to recover.

Census 2020 - Your participation counts now more than ever

As you’ve read in previous editions of Newark News, the City is encouraging our entire community to participate in this year’s Census activities. The Census is vitally important for our community, especially in these uncertain times. An accurate Census count will ensure that Newark gets opportunities to receive our fair share of funding for affordable housing, health care and childcare programs, education and food availability services, and supplemental assistance programs. Your participation in the Census is required, but it is also a simple civic duty that you can do to ensure that Newark is in the best position for long-term recovery.

By now, most residents should have received their Census 2020 forms or information via the US Mail. Now is the perfect time to review those materials and complete the questionnaire as directed. Participation is easy, especially if you choose to complete your questionnaire on line, but you may also be able to respond via email or by phone. The Alameda County Census 2020 website provides helpful information to help you participate: acgov.org/census2020. If you have Census questions for Newark staff, please email census@newark.org or call (510) 578-4330.



Police officer and community safety

The Newark Police Department continues to hold the safety of the community and staff as our highest priority. Please understand our goal is to ensure the safety of staff while balancing our sworn duty to provide public service. We need to keep our first responders protected, so they can protect you.

Our Police Officers and staff come into contact with a multitude of people on a daily basis. Here are some ways the police are minimizing exposure:

- When you call the NPD dispatch center, please be prepared to answer questions related to any potential COVID-19 exposure
- Also, as a friendly reminder, please DO NOT report potential County Order violations to our dispatch center. Please allow dispatch to focus on emergency calls. Instead, if you believe a business is violating the County Order, please email Code Enforcement at planning@newark.org.

City Hall is temporarily closed. Our front counter procedures have been updated as follows:

- Cite Sign-offs: All cite sign-off fees are temporarily suspended to reduce interactions between City staff and the public.
- Property Release: By appointment ONLY. Email: laura.dasilva@newark.org, sandra.soto@newark.org, or call: (510) 578-4857.

- Records Function: By appointment ONLY (M-F, 8am - 5pm). Email: policerecords@newark.org or call: (510) 578-4301.

You may see officers wearing protective equipment such as masks and gloves. Please do not assume that someone exposed to COVID-19 is involved on that call. Officers come into contact with a multitude of people daily, so we are taking precautions to limit exposure and transmission.

We are taking cold property crimes over the telephone by an Officer or Community Service Officer. To report, call Non-Emergency at (510) 578-4237.

What is a Cold Property Crime?

A Cold Property Crime is when the suspect is no longer on the scene or nearby or when it is reasonable to assume the suspect will not return to the scene. The case will then be handled over the telephone by an officer.

Some examples of these cold property crime incidents include hit and run (no injury), petty theft, vandalism, etc. Please rest assured officers are still responding to in-progress crimes. If you need us, we are still here for you!

Connect with us on social media! General updates appear on Newark Police social media accounts on Facebook, Nextdoor, Nixle and Twitter.

Urgency Ordinance - continued from Page 1

- Reduction in staff reporting to work
- Modification in opening hours
- Reduction in consumer demand
- Compliance with government health authority orders; or
- Other similarly caused reason resulting in loss of business income

Tenants are required to pay back unpaid rent in 25% increments within forty-five (45) days, ninety (90) days, one hundred thirty-five (135) days, and one hundred eighty (180) days of the date of expiration of the Eviction Moratorium.

The ordinance takes effect immediately and will remain in effect until May 31, 2020, the expiration date of the City's local emergency, or the expiration of the Governor's proclamation of a state of emergency, whichever is later.

There is also a separate State law (Penal Code Section 396(f)) that prohibits residential evictions during the first thirty (30) days of a State of Emergency. Governor Newsom declared an emergency on March 4, 2020.

For questions regarding the City of Newark's ordinance, please contact Mr. Steven Turner, Community Development Director, at steven.turner@newark.org or (510) 578-4208.

Visit the City's website at www.newark.org or City of Newark, CA Facebook page for updated information regarding COVID-19 and how it is impacting our community.

Scam alert

We want our community to be aware of scams related to COVID-19. The following are some examples:

- Telephone fraud-criminals call victims pretending to be a clinic or hospital officials. Criminals claim a relative of the victim is sick with the virus and request payments for medical treatment
- Subjects offer to sell fake or non-existent testing kits
- Charity scams
- Fake sites offering to sell medical supplies

- Subjects go door to door claiming to be medical staff
- Subjects asking to conduct a home inspection

If someone calls you, please ask for their name and title and supervisor's name, phone number, and additional information. Do not provide them with your information unless you have verified that they are who they claim to be.

Please do not fall victim to these scams. If you have any questions, or something does not seem right, you can call us at 510-578-4237

There are many so-called "experts" online and in the media who have offered their opinions on the COVID-19 pandemic. Please keep yourself educated and informed of the facts. The links below will provide you with the most current and accurate information:

<https://covid19.ca.gov/>
<http://www.acphd.org/>
<https://www.cdc.gov/coronavirus/2019-ncov/index.html>

Building Inspection and Public Works Engineering services during the shelter-in-place

Although City Public Works offices remain closed during the Shelter-in-Place period, some services are available to the public on a remote basis. The objective is to provide as many services as possible while remaining in compliance with the latest Order from the Health Officer of Alameda County (dated March 31, 2020) and without compromising the health and safety of the community and City personnel. The latest order significantly limits construction activity that can take place during the Shelter-in-Place period and therefore inspection services are also very limited. The current Order limits construction to the following:

- Affordable housing that would be income-restricted;
- Public works projects if specifically designated as an Essential Governmental Function;
- Shelters and temporary housing;
- Projects immediately necessary to provide critical non-commercial services to individuals experiencing homelessness, elderly persons who are economically disadvantaged, and persons with special needs;
- Construction necessary to ensure that existing construction sites are left safe and secure;
- Construction or repair necessary to ensure that residences and buildings containing Essential Businesses are safe, sanitary, or habitable to the extent such construction or repair cannot reasonably be delayed.

Please note that most residential construction projects do not meet any of these criteria. For all Building Inspection services please see the Building Inspection Division webpage at: <https://www.newark.org/departments/public-works/building-inspection-division> .

Alternatively, call (510) 578-4261 for any Building Inspection inquiries and a staff member will respond to you as soon as possible.

For all Engineering Division services including traffic signal and streetlight issues, please contact the Engineering Division at (510) 578-4589 and a staff member will respond to you as soon as possible. For specific Public Works Engineering Inspection Services inquiries, please call (510) 578-4671.

City contact numbers to call during COVID-19 shelter-in-place

Business License/Fees, UUT, Finance Questions	(510) 578-4310	finance@newark.org
Community Development - Discretionary Entitlement Projects	(510) 578-4330	planning@newark.org
Community Preservation (Code Enforcement) re: violations of the Alameda County Health Order	(510) 578-4330	planning@newark.org
Community Preservation - All other information refer to Community Preservation on City's webpage at:		www.newark.org
COVID-19 County Order Violations	(510) 578-4330	planning@newark.org
COVID-19 General Questions	(510) 578-4200	Check City webpage at www.newark.org or email city.manager@newark.org
Economic Development	(510) 578-4273	anne.stedler@newark.org
Garbage, General City Questions	(510) 578-4200	city.manager@newark.org
Human Resources	(510) 578-4267	human.resources@newark.org
Inspection Services	(510) 578-4261	BIrequests@newark.org
Plan Review	(510) 578-4261	building.inspection@newark.org
Plan Review - Community Development	(510) 578-4330	planning@newark.org

The following meal programs are available to the public:

Viola Blythe Center

37365 Ash Street, Newark (510) 794-3437

Viola Blythe currently operates a food distribution program that provides up to two weeks of canned and dry foods as well as bread products. Boxes of food are assembled by volunteers and placed outside for pick-up.

The boxes can be picked up Monday through Wednesday between 11:00 a.m. and 1:00 p.m.

LOV Newark

8440 Central Blvd., Suite A/B (510) 793-5683

LOV Newark maintains an emergency food pantry. Members can arrange for either pick-up or have bags of groceries.

Salvation Army

36601 Newark Blvd., Newark (510) 793-6319

Salvation Army has a food pantry in which community members can pick-up groceries every weekday from 9:00 a.m. until 11:00 a.m. Community members must provide proof of Tri-City residency.

Tri-City Volunteers

37350 Joseph Street, Fremont (510) 598-4065

Tri-City Volunteers is a large food bank that provides an assortment of food to tri-city families, including fruits and veggies, grains, canned goods, meats, and dairy items. They serve over 1,000 families every week. They are open at various times throughout the work week.

Marketplace Pick Up Hours:

Mondays-Thursdays

9:30a-10:00a Registered Disabled Clients

10:00a-12:30p Morning General Clients

12:30-1:00p Closed to Replenish TCV Marketplace

St. Edward Church

5788 Thornton Ave., Newark (510) 797-0241 St. Edward Church provides a Friends and Family meal program on the second and fourth Sunday of every month between the hours of 1:00 p.m. and 2:30 p.m. Due to the pandemic, prepacked lunch bags will be provided with no sit down dining.

Newark Unified School District

Newark Unified School District is offering "to-go" meals for all Newark students including non-NUSD students under 18 years of age at two locations:

- Newark Jr. High School 6201 Lafayette Ave; and

- NUSD Central Kitchen 37370 Birch St.

Students will receive two meals on Mondays and 3 meals on Wednesdays. For more information, please visit www.newarkunified.org.

Emergency Sikh Food Pantry

FREE services to deliver food to those in need. Those eligible include: The elderly, single parents, low income and special circumstances. Additional services include hand-out packed meals for people in need. Families and the elderly that are ill and cannot visit grocery stores can arrange for grocery pick-up twice a week via drive-thru at Gurdawa Sahib Fremont. Visit: www.tinyurl.com/sikhfoodpantry.

Carry Out Pre-Packed Food Times: Monday through Saturday, 5:30 - 7:30 pm and Sunday from 12:00 - 2:00 pm

Grocery Drive-Thru Pickup times: Monday and Friday only, 3:00 - 6:00 pm

Food and Grocery Pickup address: 300 Gurdwara Road, Fremont, CA 94536

Alameda County residents visit: www.tinyurl.com/sfp-alameda



CITY OF NEWARK
37101 Newark Boulevard, Newark, CA 94560-3796
web site: www.newark.org e-mail: city.manager@newark.org

PRSR
U.S. POSTAGE
PAID
NEWARK, CALIF.
PERMIT NO. 1
ECRWSS

POSTAL CUSTOMER



Bulletin Board

City parks

Although all Newark parks remain open for walking, jogging and independent exercise, the City has had to close many park facilities for the general safety and well-being of the community. This includes the Skate Park and the All-weather Turf Fields at Mel Nunes Sportsfield Park, the new NewBark Dog Park and all playgrounds, sport courts, drinking fountains and restrooms.

In order to limit the further spread of COVID-19 and in light of guidelines from the State and County Health Departments, the City of Newark is closing certain areas of ALL City park playgrounds, restrooms, and sports courts. The closure affects:

- Birch Grove Park - 38080 Birch Street: Playground, Basketball and Tennis courts
- Byington Park - 5825 Central Avenue: Playground
- Civic Center Park - Civic Terrace Avenue: Playgrounds
- Community Park - 35501 Cedar Blvd.: Playground, Basketball and Tennis courts
- Jerry Raber Ash Street Park - 37365 Ash Street: Playground and Basketball court
- Mayhews Landing Park k- 6251 Montcalm Avenue: Playgrounds and Basketball court
- Mel Nuntas Sportsfield Park -6800 Mowry Avenue: Turf Fields and Skate Park
- Mirabeau Park - 35820 Haley Street: Playground
- Music Park - 5593 Musick Avenue: Playground
- NewBark Dog Park - 35501 Cedar Boulevard
- Susan Johnson Bridgepointe Park - 36111 Spruce Street: Playground

We recognize that the closure of these facilities is an inconvenience, but this is a necessary action in order to minimize the potential for transmission of the COVID-19 virus. Please observe and adhere to all posted signs in our parks and stay safe at all times.

THESE AREAS WILL STAY CLOSED UNTIL FURTHER NOTICE!

Garbage collection service during the shelter-in-place

Republic Services will continue with residential collection services on regularly scheduled days with no anticipated interruptions. However, Republic Services is implementing a few operational changes to ensure the safety of the community and its employees:

- Bulk item pick-ups have been suspended indefinitely in order to limit the driver's direct contact to the waste stream
- Residential collection service may begin at 5:30 a.m. rather than 6:00 a.m. in some areas in order to have drivers stagger their route start times and thereby limit the number of employees gathering and deploying at any one time.
- The office at 42600 Boyce Road, Fremont is closed to the public. Alternative options to conduct business (e.g., paying bills or obtaining overage bags) will include online services, telephone, and mail. Options are posted on the Republic Services Website at: <https://www.republicservices.com/locations/california/newark>

Customers can also call (510) 657-3500 with questions related to garbage collection.

Public Works maintenance services during the shelter-in-place

The City's Service Center is closed to the public during the Shelter-in-Place period. For any Maintenance Division inquiries or concerns related to parks, streets, or City buildings please contact the division by telephone at (510) 578-4806 or by email at maintenance@newark.org and a staff member will respond to you as soon as possible.