

January 25, 2021

## The COVID-19 Vaccine Distribution Plan in California

By Andrew Soergel , January 14, 2021

<https://states.aarp.org/california/covid-19-vaccine-distribution>

California is now administering COVID-19 vaccines from Pfizer and Moderna to residents 65 and up, along with health care workers and residents and staff of nursing homes and other long-term care facilities. California extended vaccines to older adults on Jan. 13, after federal officials urged states to prioritize immunizing people 65 and up and adults with serious health conditions.

People 65 and up are in the top tier of California's phase 1B priority group, along with people who work in the education, childcare, emergency services and food and agriculture sectors. People over 50 and all adults with serious medical conditions are grouped in the top tier of the state's phase 1C priority group. They'll get a vaccine before the general public but will need to wait until the state works through its top priority groups.

### When will the vaccine be available to older Californians?

On Jan. 13, Gov. Gavin Newsom expanded vaccine eligibility to adults 65 and up. Some older Californians had already been able to get a vaccine after their local health departments ran out of health care workers to vaccinate as part of the state's phase 1A distribution. California initially prioritized older medical professionals and residents of skilled nursing facilities, but state officials have since opened vaccines to younger health care workers and less medically vulnerable long-term care residents to avoid wasting vaccine supply.

The state has developed a detailed tier system for its first wave of vaccines. With vaccines now open to people 65 and up, essential workers in the education, childcare, emergency services and food and agriculture sectors are next in line at the top of the state's phase 1B priority group. Below them, in the second tier of phase 1B, are workers in the transportation and logistics, industrial, commercial, residential and critical manufacturing sectors. People who are incarcerated or homeless are also listed in the second tier of phase 1B.

Once these groups are vaccinated, doses will be available to people in phase 1C. This group consists of people between the ages of 50 and 64, as well as people 16 and up who have serious medical conditions. Workers in defense, energy, IT, water and wastewater, chemical and hazardous materials, communications, financial services, government operations are also listed in phase 1C.

Federal health officials announced Jan. 12 that they strongly recommend that states open vaccines to people 65 and over. California opened vaccines to older residents the next day. The Department of Health and Human Services also said that the federal government would begin releasing all available vaccines, rather than holding back second doses, and that Americans would still be able to get second doses on time.

How do I know when I'm able to get a vaccine?

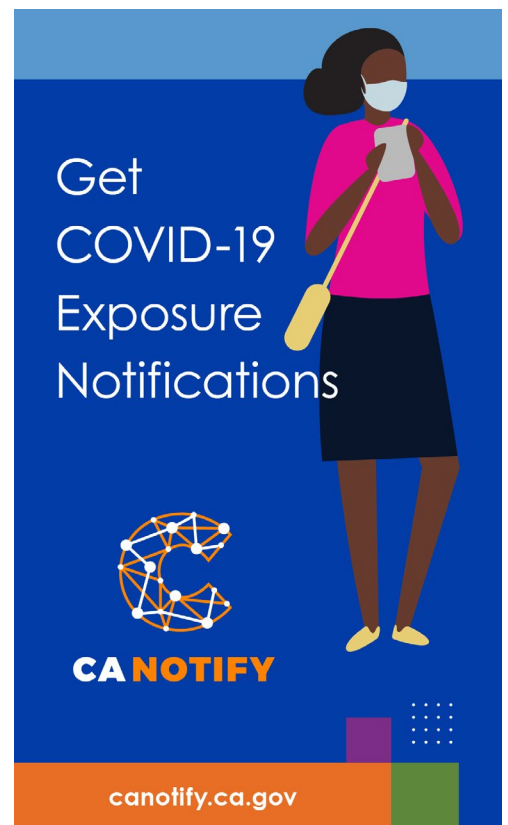
You can find updates about the vaccine's availability for various groups on the California vaccine information website. You can also call the state's COVID-19 hotline at 833-422-4255.



<https://covid-19.acgov.org/vaccines#localplanning>  
and register to get notified when it's your turn to get the vaccine.

## In this issue:

Informative Articles  
AARP Tax Assistance  
Winter Recreation Activities  
At Home... Crafts, Activities & Exercise



Get  
COVID-19  
Exposure  
Notifications

**CA NOTIFY**

[canotify.ca.gov](https://canotify.ca.gov)



**CA Notify**  
does not gather:

- X Your name
- X Your contact information
- X Your location
- X Your movements
- X The identity of people you meet

**CA NOTIFY**

[canotify.ca.gov](https://canotify.ca.gov)

# Valentine Drive-Thru Lunch

Friday, February 12... \*\$5/senior

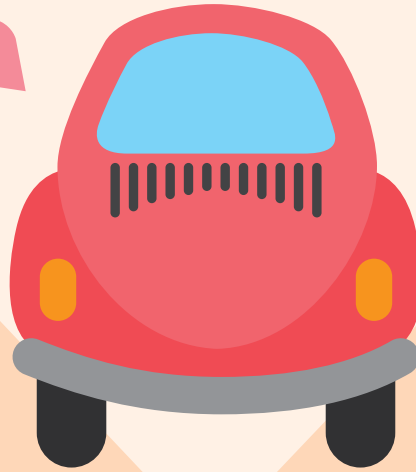
Drive-Thru 12:00-12:15pm

At the Silliman Activity Center Front Parking Lot

Menu: Chicken  
Fettucine Alfredo

Space is limited.

\*Pre-registration required  
[newarkca.activityreg.com](http://newarkca.activityreg.com)  
or use the mail-in  
registration form on  
the final page of our  
Weekly Update.



Please wear  
a mask and  
remain in  
your vehicle.

# St. Patrick's Day Drive-Thru Lunch

Wednesday, March 17... \*\$5/senior

Drive-Thru 12:00-12:15pm

At the Silliman Activity Center Front Parking Lot

Menu: Corned Beef  
Sandwich

Space is limited.

\*Pre-registration required  
[newarkca.activityreg.com](http://newarkca.activityreg.com)  
or use the mail-in  
registration form on  
the final page of our  
Weekly Update.



Please wear  
a mask and  
remain in  
your vehicle.

**Pre-Registration required for all activities at [newarkca.activityreg.com](http://newarkca.activityreg.com) or mail the form on page 10 to the Silliman Center**



### Virtual Hula With Janice

Every Tuesday

Zoom link will be emailed prior to the start.

Age	Day	Beginning	Time	Fee
55+	Tues	1/5	12:00-1:00pm	Free



### Virtual Stretching With Jessica

Every Monday & Wednesday

Zoom link will be emailed prior to the start.

Age	Days	Beginning	Time	Fee
55+	Mon/Wed	1/6	10:00-10:30am	Free



### Virtual Intro. to Crochet With Jessica & Cheryl

Supplies to make a winter scarf will be provided in advance. Beginner level class. Zoom link will be emailed prior to start.

Age	Day	Date	Time	Fee
55+	Thurs	1/21-1/28	10:00-11:00am	\$5



### Virtual Intro to Heartfulness Meditation

Heartfulness means living the lightness and joy of your true nature. Experience a practical way to uncover the heart's unlimited resources. Listening and following your inner self takes practice, and this practice is best known as meditation. Whenever we feel deeply moved or stirred by life, it is our heart helping to remind us of our profound connection to existence. Heartfulness meditation is a simple method to connect you with this inner knowing. Come experience the beauty of the heart! Instructors: Beena Shah, Chandana Pathapatti & Bijju Krishnamurthy After completing one of the intro. classes below, you will be invited to join the free Continuing Meditation Group... Mondays, 11:00-11:45am. Zoom link will be emailed prior to the start.

Age	Days	Dates	Time	Fee
18+	Tue/Wed/Th	Jan. 5, 6 & 7	11:00-11:45am	Free
18+	Tue/Wed/Th	Feb. 2, 3 & 4	11:00-11:45am	Free
18+	Tue/Wed/Th	Mar. 2, 3 & 4	11:00-11:45am	Free



### Virtual Monthly Chat & Trivia With Nick

Ongoing first Tues. of the month, 10:00-11:00am, Free for Seniors 55+

### AARP Smart Driver Course Discount

Due to Coronavirus Restrictions, the in-person AARP Smart Driver Course will not be offered in person. To renew your car insurance discount, take the course online at [www.aarpdriversafety.org](http://www.aarpdriversafety.org) Use discount code: **DRIVINGSKILLS** to receive 25% off through March 1, 2021.

### Drive-Thru Events

Location: Silliman Activity Center Parking Lot, 6800 Mowry Ave. All participants must wear a mask.

#### New Year Drive-Thru Lunch...Soup and Sandwich

Age	Day	Date	Time	Fee
55+	Fri	1/15	12:00-12:15pm	\$5

#### Valentine Drive-Thru Lunch...Pasta

Age	Day	Date	Time	Fee
55+	Fri	2/12	12:00-12:15pm	\$5

#### St. Patrick's Day Drive-Thru Lunch...Corned Beef Sandwich

Age	Day	Date	Time	Fee
55+	Wed	3/17	12:00-12:15pm	\$5

## RIDE-ON TRI-CITY!

Funded by the Alameda County Transportation Commission through Measure B/BB sales tax revenues. For more information on Measure B/BB, visit: [www.alamedactc.org](http://www.alamedactc.org)

### Ride-On Tri-City!

Services to Newark residents are provided through a partnership between the City of Newark and the City of Fremont's Human Services Department. Eligibility Requirements for RIDE-ON TRI-CITY! transportation services:

- Newark residents who are 70 years of age or older; OR,
- Newark residents who are unable to use public transportation independently due to a disability or disabling health condition.

RIDE-ON TRI-CITY! registrants can use the following:

### Taxi Service:

Subsidized curb-to-curb taxi rides in the Tri-City area using a taxi voucher. Taxi vouchers cost \$4 each and subsidize up to \$20 of taxi meter fare.

### Ride-Hailing Service (through Lyft):

Pilot program... Subsidized curb-to-curb rides on Lyft in Tri-City area. Participants pay for the first \$4 of their trip and up to \$16 of additional trip costs will be subsidized.

### Wheelchair-Accessible Van Service:

Participants requiring special door-to-door assistance can get subsidized wheelchair-accessible van rides in Tri-City area. Participants pay \$4 per one-way trip, using a pre-paid voucher. Call (510) 574-2053 for more information.

### Transportation Questions Answered...

A Transportation Resources Specialist from RIDE-ON TRI-CITY! can assess your individual needs and work with you over the phone or by email to answer any questions you have about transportation and how to get around the community.

- Learning how to ride public transit buses or BART
  - Obtaining and learning how to use a Clipper card
  - Finding and applying for affordable transportation alternatives if you no longer drive and cannot take public transit
  - Learning how to use ride-hailing services, like Lyft.
  - Renewing your driver's license, obtaining a DMV Disabled Parking placard or figuring out how to maintain driving safety as you age.
- For more information, call (510) 574-2053 or email [rideontricity@fremont.gov](mailto:rideontricity@fremont.gov)

### Senior Clipper Card

Seniors 65 years of age or older can obtain a Senior Clipper Card by visiting: [www.clippercard.com/discounts](http://www.clippercard.com/discounts) MAIL your application form and a copy of your proof-of-age document to: Clipper Youth/Senior Applications, PO Box 318, Concord, CA 94522-0318. Do not send originals, as documents will not be returned. Or EMAIL scans or photos of your application form and your proof-of-age document to [seniorityouthapps@clippercard.com](mailto:seniorityouthapps@clippercard.com). Or FAX your application form and proof-of-age document to 877.565.3149. Please allow 7 business days for delivery.





© AUNTY ACID 2020

aunty acid



instagram.com/scottmetzgercartoons

METZGER



## UPDATE

Unfortunately, AARP Tax-Aide appointments filled quickly. You are still welcome to call AARP Tax Aide to join a waitlist @ 408-475-3905 and leave a message with your Name, Phone number and AARP site you used in previous years. If they can add more appointments, they will notify you. Please do not leave multiple messages.

## Fremont VITA [www.fremontvita.org](http://www.fremontvita.org)

Our **VIRTUAL VITA** tax service will begin early February

### For Returning Customers

We are preparing for the 2020 tax filing season! Our VITA service will look a little different this year, but rest assured we will deliver the same quality service we've provided for over 18 years. Due to COVID-19, and to ensure your safety and well-being, our tax preparation service will be 100% virtual. Our VITA site is a member of United Way Bay Area's Earn It! Keep It! Save It! Coalition, and this year we've partnered with Code for America to offer on-line filing. Our team of IRS-certified tax preparers will prepare your return while communicating with you throughout the entire process. We will also offer drop-off service for customers who do not have access to technology.

### For New Customers

To receive information about our VITA services, please [click here](#) to send us an email. In the subject line of the email, please type: **REQUESTING VITA INFO**. In the body of the email, please provide your first and last name, cellphone number, and email address.

Soon, returning and new customers will receive information about our new process via email and/or a text message. Please stay tuned!

We forward to serving you in the upcoming tax season!

Your local Volunteer Income Tax Assistance (VITA) Sites:

Fremont Family Resource Center

New Haven Adult School/Union City Family Center

Ohlone College Tri-Cities Career Center





## What You'll Need:

- 1cm wool felt balls (90-100 per coaster depending on the size)
- cork coasters (typically found at TJ Maxx, HomeGoods, etc.)
- E600 glue
- wooden skewer (or something else to place the glue with)

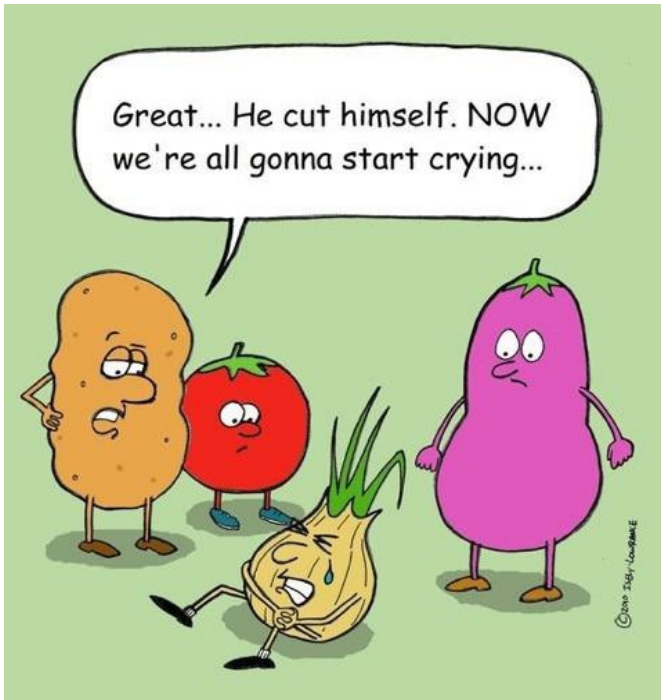


- Begin by gluing one felt ball to the center of your coaster.
- Use your wood skewer to place the glue where you want it.
- To keep the felt balls as tight as possible, you'll want to stop and allow the glue to dry every so often as you work around each coaster.

- Continue working all the way around until your coaster is completely covered.
- For the last row, I had just enough space to glue each ball to the edge of the coaster and the felt ball next to it. This made the cork coaster virtually disappear.



<https://inspiredbycharm.com/diy-wool-felt-ball-coasters/>



## BIG BOGGLE GAME CARD

C	S	T	E	T
A	I	R	L	S
P	D	A	E	S
U	E	C	S	E
R	O	T	R	I

Objective: try to find words in the 5x5 grid of letters. Words must be constructed from the letters of sequentially adjacent cubes; horizontally, vertically, and diagonally neighboring. When forming your word, you can select letters from any position. Words must be at least three letters long, may include singular and plural (or other derived forms) separately, but may not use the same letter cube more than once per word. Write your words on a sheet of paper then add up your score accordingly:

3 letters=1pt, 4 letters=2pts. 5 letters=3pts., 6 letters=4pts., 7 letters=6pts., 8 letters=10pts., 9+letters=15pts.



# Crossword Puzzle

Answers on page 9.

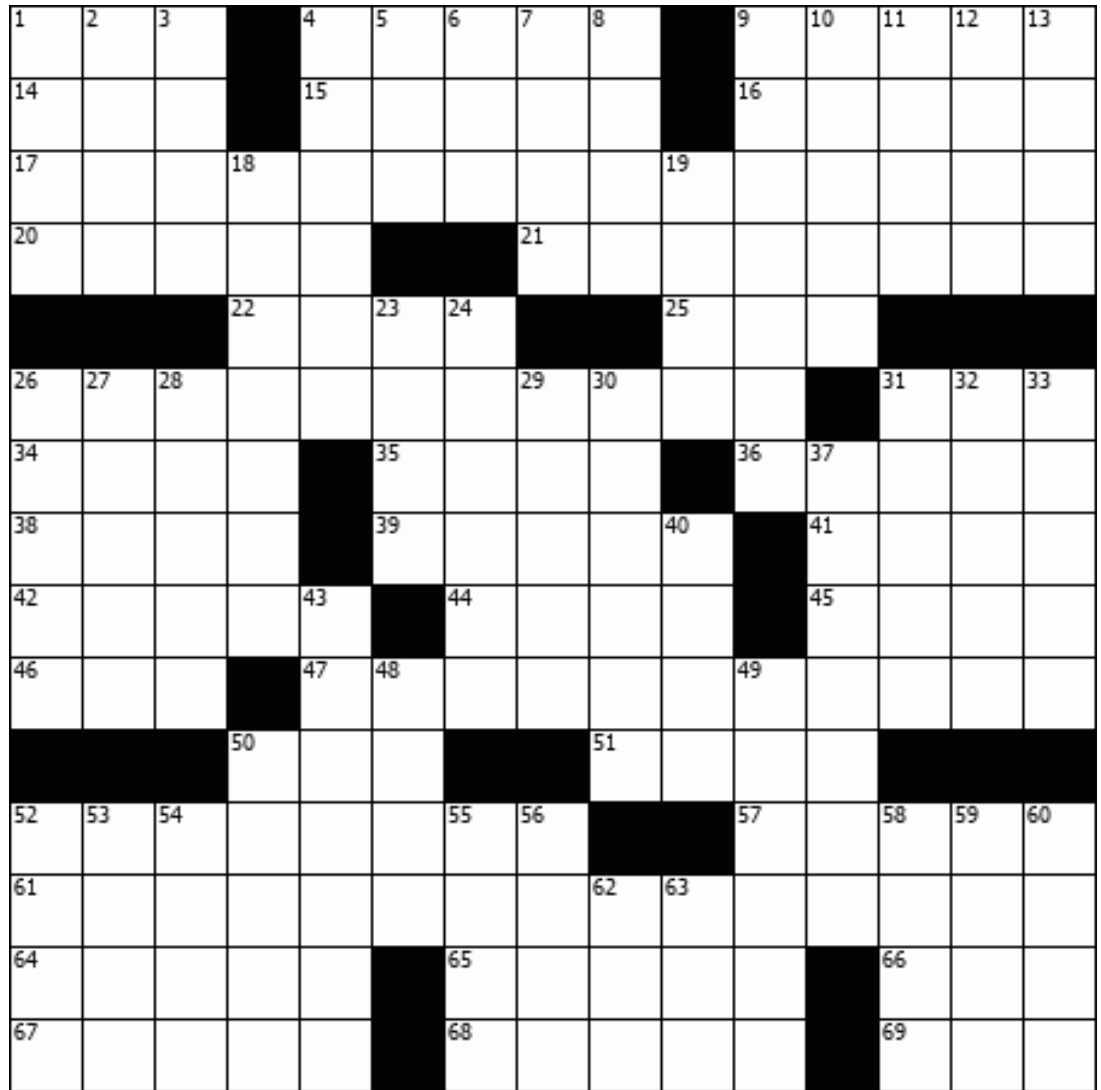
## Across

1. Uru. neighbor
4. "The Girl \_\_\_ Marry" ("Annie Get Your Gun" song)
9. Military freshman
14. Lucy of "Ally McBeal"
15. Argument
16. Reject authority
17. Suffering from nyctophobia
20. Perplex
21. Pinkish wader
22. Nobel physicist Niels
25. It may be rouge or blanc
26. A pint has 16
31. Actress Gardner
34. Bumpkin
35. Fascination for Fido
36. Outer limits
38. Elvis's middle name
39. 1995-96 Israeli prime minister
41. Headphones, slangily
42. Butcher orders
44. Eurasian duck
45. Wait
46. N.C. summer hrs.
47. "That's enough!"
50. Mangy mutt
51. Mob chaser?
52. Helium or neon
57. Island group studied by Mead
61. Engaged in a fulfilling pursuit
64. 1985 Kate Nelligan film
65. Studio warning sign
66. German article
67. Jeter of the Yankees
68. Overgrown with fringed flora
69. Promise "kept" in 17-, 26-, 47- and 61-Across

## Down

1. "Ah, me!"
2. Difference of opinion
3. Spiritual adviser
4. Camera support
5. 1963 Paul Newman title role
6. "Wheel of Fortune" request
7. Minor falling-out
8. Worldwide (abbr.)
9. Basis of a conclusion
10. Escorted, as from another room
11. "Voice of Israel" author Abba
12. Icy obstacle
13. Nevada city on I-80
18. From the surrounding environment
19. Own
23. Ear dangler
24. Least polite
26. Photo holder
27. Decoyed
28. Lusitania sinker
29. Bellini opera

30. Angler's baskets
31. One more time
32. "Falstaff" composer
33. It's a good thing
37. Norville of "Inside Edition"
40. Houlihan portrayer on "M\*A\*S\*H"
43. First man-made space satellite
48. The munchies, e.g.
49. 1939 Jimmy Stewart western role
50. Hag
52. Picked out of a lineup
53. World's longest river
54. River through Hesse
55. Starting on
56. Volume unit
58. It covers half a calf
59. Having only length, briefly
60. Farming prefix
62. Repetitive card game
63. "Collages" novelist Anaïs



## Look Up! Word Search

Find and circle all of the items that you might see when you look upward.  
The remaining 24 letters spell an additional item you might see.

U P L A N E T S K R O W E R I F N  
 G N I D J E T E X H A U S T E N N  
 P O M T Y R U C R E M K I T E O I  
 C O M E T C H I M N E Y S M O K E  
 R M T S T G R B T S H F P L G I S  
 E S E E A E L E A H D A L M N S D  
 V F E L E U O T T R E A Z S I O R  
 I L A N E R E R E I B S T E T L I  
 D X I S I L T P S R P R U E I A B  
 Y R K G L L A E I H E U N N R R I  
 K Y A I H R R A S E O A J N W E G  
 S S T I C T T E T R L W R L Y C D  
 R E D S N O N L W P E U E D K L I  
 A Y Y U H B I I R O T V I R S I P  
 T K N G O G O I N A P O I O B P P  
 S R A M H L A W S G J V E N U S E  
 E R E T P O C I L E H C T E U E R

AIRPLANE  
 BIG DIPPER  
 BIRDS  
 BLIMP  
 BLUE SKY  
 CHIMNEY SMOKE  
 CLOUDS  
 COMET  
 DRONE  
 FIREWORKS

GALAXY  
 HAZE  
 HELICOPTER  
 HOT AIR BALLOON  
 JET EXHAUST  
 JUPITER  
 KITE  
 LIGHTNING  
 MARS  
 MERCURY

METEOR SHOWER  
 MOON  
 PLANETS  
 POWER LINES  
 RAINBOW  
 SATELLITE  
 SATURN  
 SKYDIVER  
 SKYSCRAPER  
 SKYWRITING

SMOG  
 SOLAR ECLIPSE  
 STARS  
 STREET LIGHT  
 THE SUN  
 TREETOP  
 UNIVERSE  
 VENUS



A	R	G		T	H	A	T	I		P	L	E	B	E
L	I	U		R	U	N	I	N		R	E	B	E	L
A	F	R	A	I	D	O	F	T	H	E	D	A	R	K
S	T	U	M	P			F	L	A	M	I	N	G	O
			B	O	H	R			V	I	N			
F	L	U	I	D	O	U	N	C	E	S		A	V	A
R	U	B	E		O	D	O	R		E	D	G	E	S
A	R	O	N		P	E	R	E	S		E	A	R	S
M	E	A	T	S		S	M	E	W		B	I	D	E
E	D	T		P	U	T	A	L	I	D	O	N	I	T
			C	U	R			S	T	E	R			
I	N	E	R	T	G	A	S			S	A	M	O	A
D	I	D	O	N	E	S	O	W	N	T	H	I	N	G
E	L	E	N	I		O	N	A	I	R		D	E	R
D	E	R	E	K		F	E	R	N	Y		I	D	O



### Cute Baby Animals Compilation



<https://www.youtube.com/watch?v=Eb0qWVmpY9U>

### Exercise

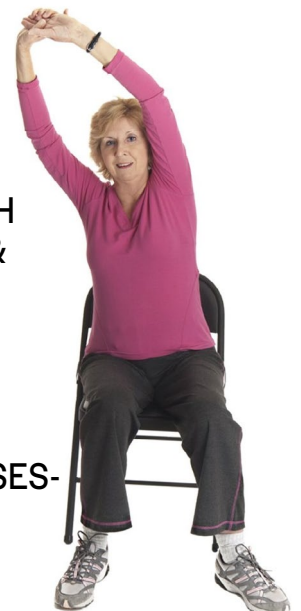


FREE MORNING STRETCH  
W/ JESSICA, MONDAYS &  
WEDNESDAYS @ 10AM  
Click [HERE](#) to register!



30 MIN. SENIOR EXERCISES-  
STANDING

[https://www.youtube.com/  
watch?v=VoXqduoL46E](https://www.youtube.com/watch?v=VoXqduoL46E)



**ONLINE...** at [newarkca.activityreg.com](http://newarkca.activityreg.com) or scan the QR Code

**MAIL...** registration form and payment to "City of Newark":  
Silliman Activity & Family Aquatic Center  
6800 Mowry Avenue  
Newark, CA 94560



**PHONE IN REGISTRATIONS ARE NOT ACCEPTED.**

## Newark Recreation and Community Services Registration Form

Adult/Main Contact Name: \_\_\_\_\_ Birth Date: / /

Day Phone: \_\_\_\_\_ Cell Phone: \_\_\_\_\_

Email Address: \_\_\_\_\_

Address: \_\_\_\_\_ City: \_\_\_\_\_ Zip: \_\_\_\_\_

Emergency Contact Name: \_\_\_\_\_ Phone: \_\_\_\_\_

Participant: Name	Birth Date	Gender	Class Name, Date and Time	Fee
_____	/ /	M F	_____	\$ _____
_____	/ /	M F	_____	\$ _____
_____	/ /	M F	_____	\$ _____
_____	/ /	M F	_____	\$ _____

Voluntary donation to the Recreation Scholarship Program: \$ \_\_\_\_\_

Total: \$ \_\_\_\_\_

**Release of Liability:** I understand that my (or my minor child's/ward's) participation in any City activity is voluntary. Further, I understand that participation can be a hazardous activity. By signature below, I agree that neither I, my successors, assigns, nor anyone acting on my behalf will hold the City of Newark, its officers, agents, employees, or volunteers liable for any injury, accident, or illness arising out of my (my minor child's/ward's) voluntary participation in the above named program/activity. I hereby release the City of Newark, its officers, agents, employees, or volunteers from and against any and all claims, cost liabilities, expenses, or judgments, including attorney's fees and court costs arising from my (my minor child's/ward's) participation in the program/activity or any illness/injury resulting therefrom, and hereby agree to indemnify and hold harmless the City of Newark, its officers, agents, employees, or volunteers from and against any and all such claims, whether caused by negligence or otherwise.

I further understand that the City of Newark is not and will not be responsible for Workers Compensation benefits as a result of any injury or illness due to my (my minor child's/ward's) voluntary participation in this activity.

The City of Newark reserves the right to photograph facilities, activities, and program participants for potential use in advertising brochures, department social media, and the City's web page. All photos will remain the property of the City of Newark.

\_\_\_\_\_  
Signature of Participant (or Parent/Guardian, if under 18)

Payment: \_\_\_\_\_ Check or Money Order made payable to the "City of Newark"

\_\_\_\_\_ Charge VISA/Mastercard... Card #: \_\_\_\_\_ - \_\_\_\_\_ - \_\_\_\_\_ Expiration: \_\_\_\_ / \_\_\_\_  
month/year