



City of Newark  
Planning Commission Hearing

August 24<sup>th</sup>, 2021

---

# About Us

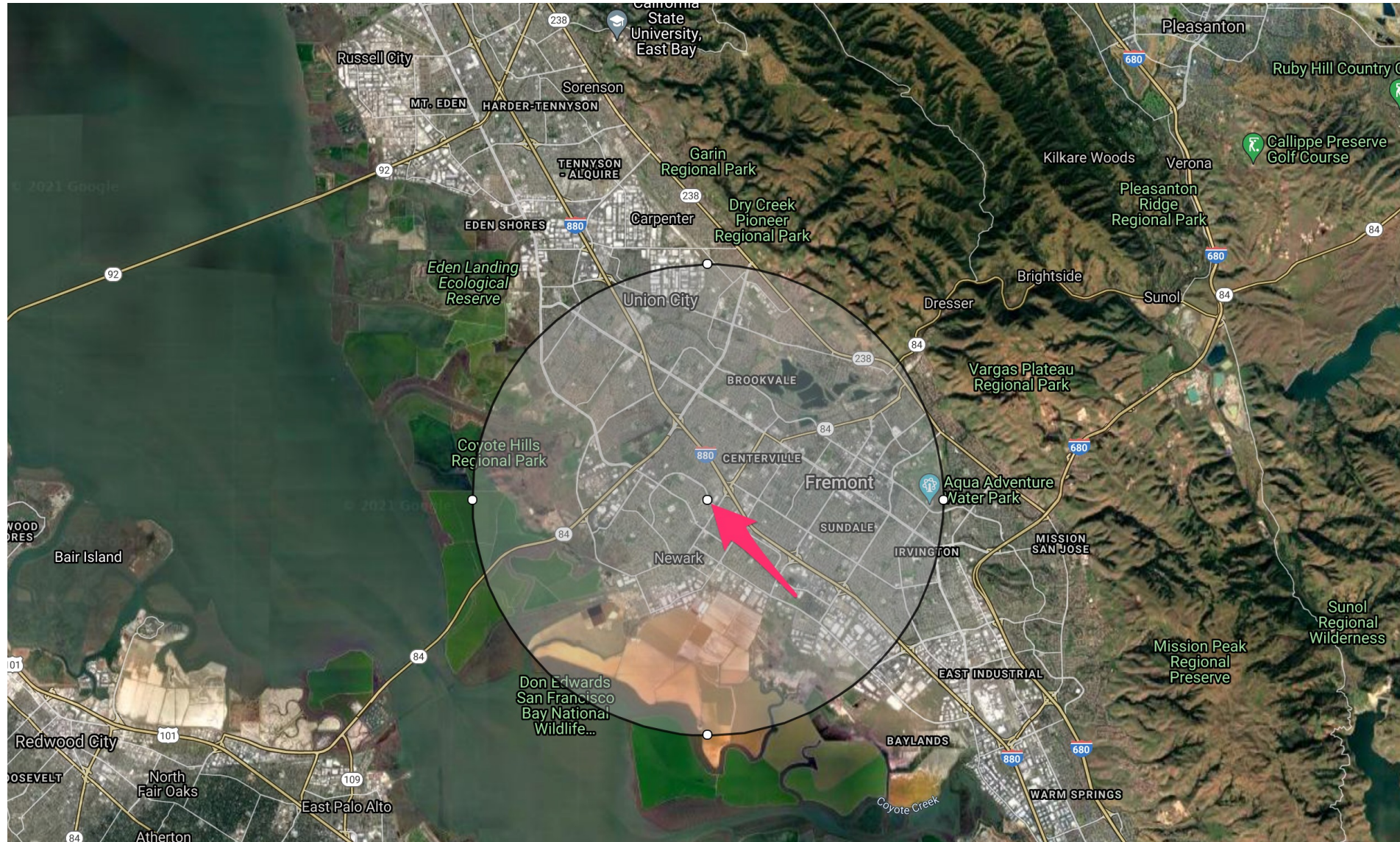
- International nonprofit, Social-Spiritual organization
- Active in the bay area from last 7 years
- 50 members in bay area, 90% from tri-city
- Expected to grow to 75 in next 5 years
- Community contributions
  1. Cultural activities
  2. Indoor meditation classes
  3. Recreational activities
  4. Health screenings
  5. Disaster relief

# Our Vision/future Goals

- Subject property is first one on the west coast to facilitate SMVS's mission of helping the communities
- SMVS has been serving community of tri-city (Newark, Fremont and Union City) from last 7 years
  - Received many awards including special congressional recognition from Honorable RO Khanna
- This will be great value add to the City of Newark and surrounding communities



# Location





# Subject Property



# Site Information

- Size: +/- 58,370 SF /1.34 Acres
- Parking: 91 (76 Onsite/15 easement)
- Current Use: Vacant/Unoccupied (Prior restaurant)





# Proposed Use/Improvements

- Temple/Community Assembly
- No exterior changes/minimal changes to interior
- Improvements
  - Disabled person parking
  - Disabled person ramp
  - Bike racks to encourage people to be environment friendly
  - Landscape improvements (adding new trees, ascent planting) to make site appealing

# Expected traffic patterns

Time	Weekday	Weekend	
	M - F	Saturday	Sunday
6 am - noon	5 Members	5 Members	5 Members
Noon - 4 pm	5 Members	15 members	5 members
4 pm - 9 pm	5 Members	50 members	5 members



**Thank you**