

6/22/2017 Presentation
ACM Ciindall
Barbara Lundberg
Lauren Treece
D HAA Landscape

City of Newark

CITYWIDE PARKS MASTER PLAN

DRAFT May, 2017



CHAPTER 1: EXECUTIVE SUMMARY

CHAPTER 2: INTRODUCTION

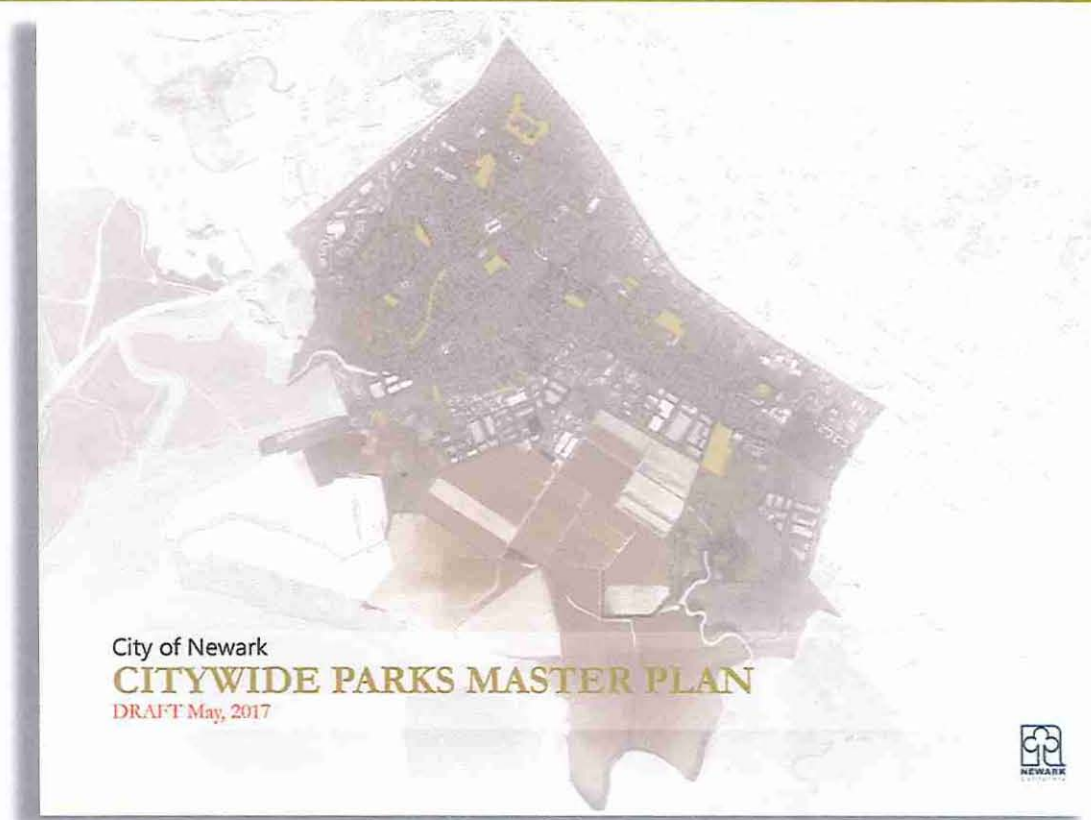
CHAPTER 3: EXISTING FRAMEWORK

CHAPTER 4: NEEDS ASSESSMENT

CHAPTER 5: PLAN

CHAPTER 6: IMPLEMENTATION

CHAPTER 7: APPENDIX



NEEDS ASSESSMENT

SUPPLY: EXISTING FACILITIES

DEMAND: COMMUNITY PROFILE + TRENDS IN RECREATION

DEMAND: COMMUNITY INPUT

GAP: MEETING COMMUNITY NEEDS

PLAN + IMPLEMENTATION

OVERARCHING GOALS

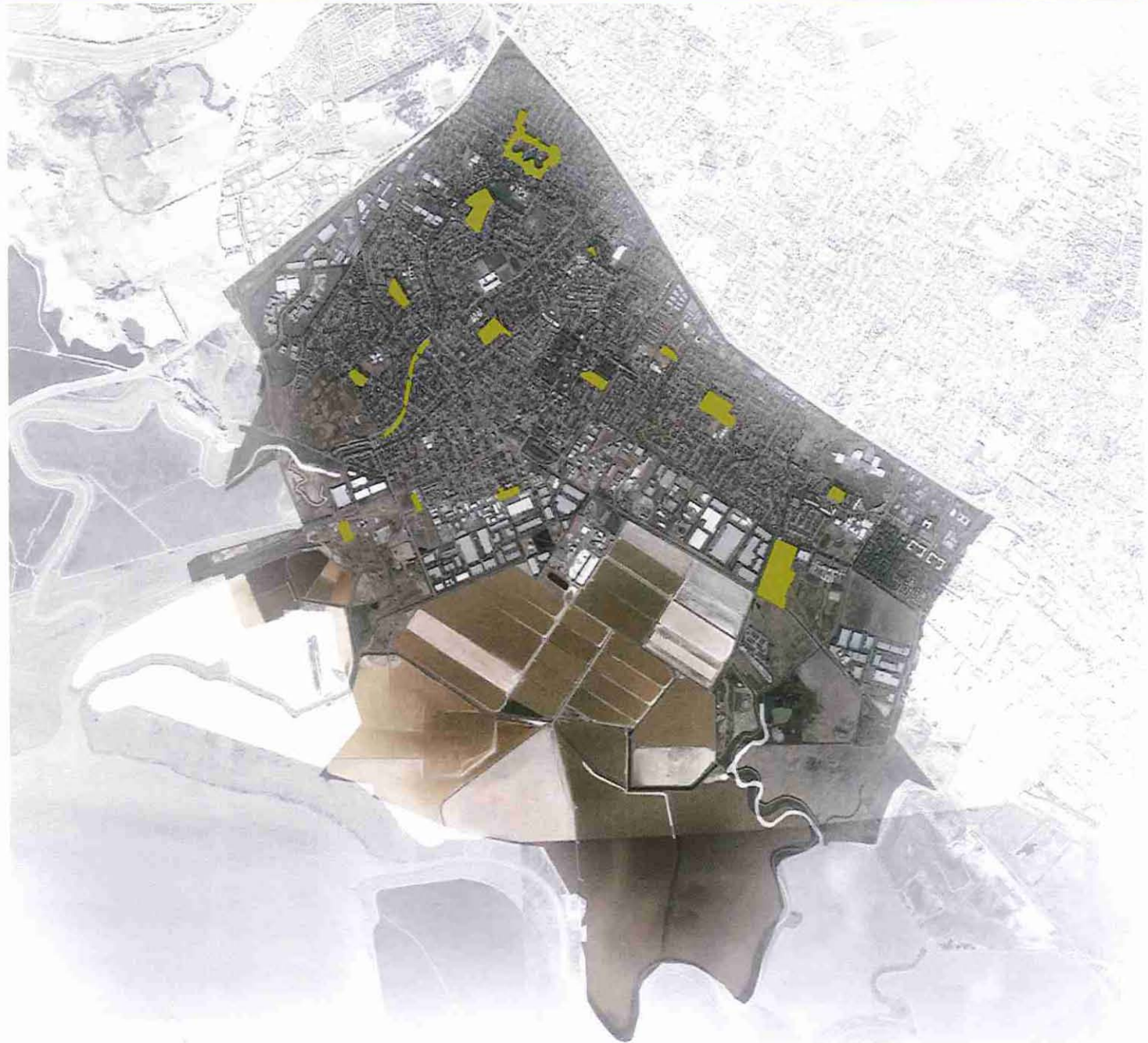
PROPOSED PROJECTS

PRIORITY PROJECTS

SCHEMATIC PARK SITE MASTER PLANS

8 NEIGHBORHOOD PARKS
3 COMMUNITY PARKS
2 SPECIAL USE PARKS
ISSUES/OPPORTUNITIES

- Accessibility
- Maintenance
- Quality of Structures and Features
- Activation



COMMUNITY PROFILE

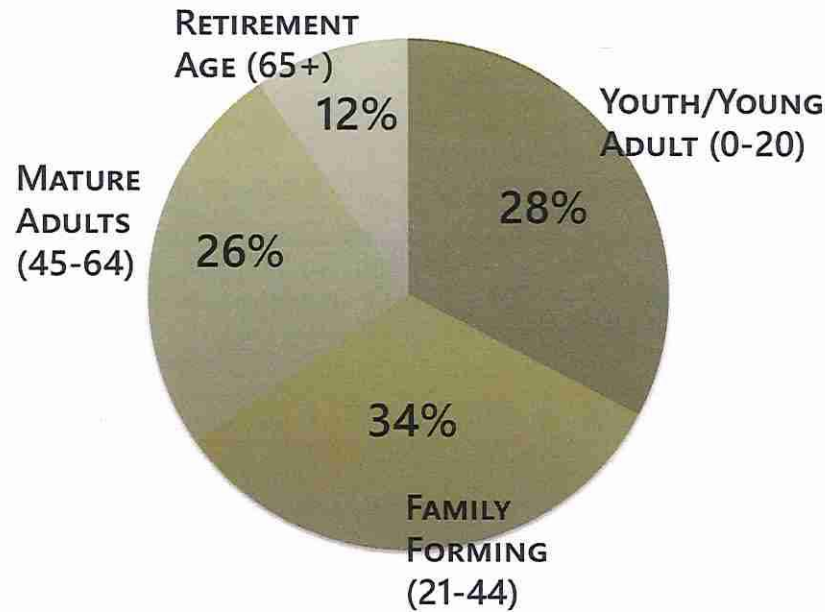
- Family-oriented
- Aging in place
- Diverse and dense
- Expected growth in population

TRENDS IN RECREATION

- Accessibility and inclusion
- Environmental and fiscal sustainability
- Flexible and health-oriented programming
- Multi-generational uses
- Technology

2010, 2015, and 2020 Race and Ethnicity Estimates

Estimates	2010	%	2015	%	2020	%
Total Population	42,573		45,396		48,026	
Hispanic or Latino	14,994	35.2%	16,709	36.8 %	18,426	38.4%
White Alone	11,726	27.5%	10,753	23.6%	9,514	19.8%
Asian	11,404	26.8%	13,112	28.9%	14,970	31.2%
Black or African American	1,908	4.5%	2,123	4.7%	2,283	4.8%
Nat. Hawaiian and Other Pac. Isl.	601	1.4%	625	1.4%	645	1.3%
Amer. Indian and Alaska Native	95	0.2%	102	0.2%	103	0.2%
Two or More Races	1,744	4.1%	1,856	4.1%	1958	4.1%
Other	101	.02%	116	0.3%	127	0.3%
Totals		100%		100%		100%



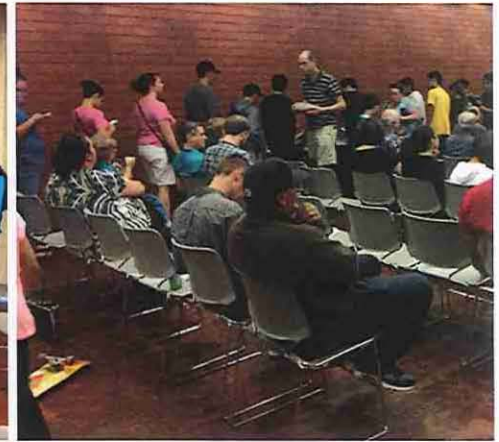
NEEDS ASSESSMENT

DEMAND: COMMUNITY INPUT

COMMUNITY WORKSHOP 1

WHAT DO YOU LIKE ABOUT THE CITY'S PARKS?

- Supply
- Size
- Location



WHAT IMPROVEMENT SUGGESTIONS DO YOU HAVE FOR NEWARK'S PARKS?

- Improve turf maintenance
- Better trash removal
- Update existing features (playgrounds, seating, etc.) for accessibility

- ALL-SEASON / PROF. GRADE SOCCER FIELDS
 ↳ turf, short grass, etc
 ↳ MORE + BETTER
 - LIMITED FIELD USE ^(need) → MORE FIELDS + BETTER SPACE (facilities)
 - REVENUE GENERATION FROM LEAGUE/TOURNAMENTS (\$) ^(need)
 - PLAY STRUCTURE @ LAKE SHORE

- DOG PARK → SPACE FOR SOCIAL INTERACTION
 ↳ TREES, BENCHES, etc
 - ANY DOG PARKS IN NEWARK = GREAT
 - BIKE PARK
 - CITY SHOULD TAKE ADVANTAGE OF DEVELOPMENT (\$) → impact fee convo in progress
 - SKATE PARK

- LITTLE LEAGUE FIELDS
 - SKATE PARK w/ BIKE ACCESS
 - BETTER/UPDATED PLAY EQUIPT. @ EXIST. PLAYGROUNDS
 - IMPROVE PARK RESTROOMS
 - LACK OF PEDESTRIAN CROSS/ROAD MARKS → PARKS
 - PARK LAND AREAS FOR EXPANSION?
 - CEDAR LINEAR PARK

WHAT ADDITIONS WOULD YOU LIKE TO SEE FOR NEWARK'S PARKS?

- Skate park
- Dog park(s)
- All-weather turf sport facility

- LACK OF ACTIVITY (REC / PHYS.) FOR YOUTH
 - INVEST IN INCOMING + EXIST. FAMILIES → SOCCER/REC FIELDS
 - APPRECIATE THAT CITY IS NOT A DESTINATION REC. PLACE
 ↳ INVEST MORE IN COMMUNITY NEEDS
 - FOCUS ON ACTIVITY FOR YOUTH
 ↳ UNSTRUCTURED
 ↳ INDEPENDENCE-BUILDING

- CONSIDER EXISTING ACCESS FOR COMMUNITY → CITY PARKS
 ↳ BETTER ACCESS (transportation + visibility)
 - EXISTING PARKS = BEAUTIFUL BUT UNDERUTILIZED + (UNDERMAINT.)
 - DOG PARKS
 - BATHROOMS REQUIRED @ NEIGHB. PARKS
 - EXIST. LIGHTING → ENHANCED ESP. @ FIELDS + REC. SPACES

- WHERE CAN DEVELOP HAPPEN?
 - GROWING COMMUNITY → KEEP COMMUNITY COHESION
 ↳ esp. youth
 - MORE SOCCER FIELDS
 ↳ INDOOR
 ↳ SULLIMAN = LIMITED
 - SKATE PARK
 ↳ LOCAL + CLOSE FOR EASY ACCESS
 - FACILITIES HAVE POTENTIAL TO IMPROVE FOR TRAD ± NONTRAD

COMMUNITY WORKSHOP 2

USING 'NEWARK DOLLARS' TO PRIORITIZE IDENTIFIED PARK PROJECTS RESULTED IN THE FOLLOWING TOP-PRIORITIES:

- Dog Park
- All-Inclusive Playground
- Synthetic Turf Field(s) with Lights
- Bike Skills Track (Pump Track)
- Skate Park



Question 1

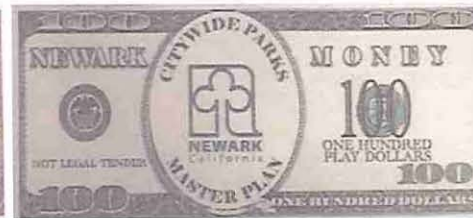
The study team identified sports and recreation facilities that are required to better serve the current and future needs of the community. As a group, review the list prepared by the team and tell us if we got it right, and if not, report the suggested changes by your group.

- #1 GROUP - PUMP BIKE TRACK / BIKE PARK
• DOG PARK
• PARK MAINTENANCE IMPORTANT
• GOLF COURSE?
- #2 GROUP - MAINTENANCE IMPORTANT
• GARBAGE BAGS
• DRINKING FOUNTAIN
• HORSE SHOE
• BOCCIE
- #3 GROUP - BIKE PARK / PUMP TRACK
• SOCCER, BASEBALL ETC FOR MULTIUSE FIELDS
FOOTBALL, VOLLEYBALL
- #4 GROUP - BIKE FACILITY
• SKATE PARK - HOW GET TO IT - HOW BIG? SKATEERS
• SAND VOLLEYBALL

Question 2

As a group, prioritize the ^{Community Garden} top three projects, and then a second tier of the next four projects and a third tier of the remaining projects. ^{Picnic}

PROJECTS	PRIORITY 1	PRIORITY 2	PRIORITY 3
All-inclusive playground	●●●	●●●	
Cricket			●
Dog Park	●●●●		
Fields (Multi-Use): Synthetic Turf with Lights	●●●	●●●	
Functional water features		●●●	
Golf Course			
Outdoor performance/festival space		●●●	
Park renovations		●●●	
Pickleball courts			
Skatepark	●●●	●●●	
Bike Park/Pump Track	●●●	●●●	
Bocce			●
Sand Volleyball			



COMMUNITY WORKSHOP 3

PRESENTATION OF SCHEMATIC PARK SITE MASTER PLANS FOR PUBLIC REVIEW RESULTED IN:

- Enlarged proposed dog park at Birch Grove Park
- Dedicated bike skills park at Birch Grove Park



* skate park sf?
 * maintenance \$?
 * accommodating dog park sizes + access parking
 → size (large vs 3 small)
 * substantial bike/skate park? (sf)
 * 1 tennis court → soccer
 * dog park sizes (?)

* Birch dog location
 → sizes (?)
 * join dog parks w/ other recreation nodes/activities
 * compatibility of bike w/ skate facilities
 → consider other sites
 → more central (?)
 * exist. fields = small

* Consider City's budget
 * lighting + turf-field problems
 * want SUBSTANTIAL facility sizes
 * consider impact of new recreation facilities on commun.
 * Cedar linear → dog park(s)
 * volleyball @ Ashby = double?

* SKATE/BIKE FACILITY → MORE MULTI-USE FOR SILLIMAN CTR
 * LOCATION TO NEIGHBORS/HOUSING SHOULD BE CONSIDERED FOR BIKE/SKATE
 * CONSIDER OTHER LOCATIONS FOR SKATE/BIKE SITE → CONSIDER USER AGE + ACCESS/MOBILITY + DESIRE MORE CENTRAL LOCATION
 * CONTINUE INVOLVEMENT OF COMMUNITY IN PROCESS (PUBLIC PROCESS)

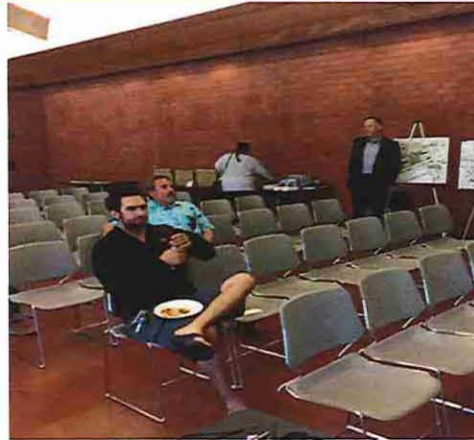
* CIVIC CENTER PARK UPDATES
 * DOG PARK SIZES → CONSIDER SPACE NEEDED
 * SKATE PARK @ BIRCH COMMUNITY PARK
 * VOLLEYBALL + BOCCIE COURTS
 → MAINTENANCE ISSUES
 → ACTUAL NEED?
 * LARGER DOG PARK @ BIRCH (ADJACENT TO HIGH DENSITY HOUSING) → N.W. FIELD

* PUMP/BIKE TRACK @ BIRCH PICNIC SITE (?)
 * UPDATED RESTROOM @ BIRCH (?)
 * ADDITIONAL BASKETBALL COURTS @ ASHBY (?)
 * LOCATION OF AMPHITHEATER/OUTDOOR EVENT SPACE @ COMMON PARK (?)
 * \$ of PARKS → NON-CITY ACTION

COMMUNITY WORKSHOP 4

PRESENTATION OF DRAFT MASTER PLAN GATHERED THE FOLLOWING INPUT:

- Master Plan should consider all user groups in project implementation
- Master Plan should incorporate sustainability in project implementation



5/21

- ACCESSIBILITY + INCLUSION TO BE INCORPORATED
- PARKING @ S SPORTSFIELD
- TIMELINE ASSOC w/ TOP 4 PROJ.s
 - ↳ 1+ YEAR
- ENSURE THAT SAFETY REMAINS @ BIRCH w/ DEVELOPMENT
- ENSURE SECURITY w/ ALL PROJ.s
- DG @ Dog PARKS → RAIN?
 - ↳ INTENT IS YEAR-ROUND USE

- UPDATED BIRCH GROVE R.F.?
 - ↳ INTENT IS TO GO TO CODE/USE.
- LITTLE LEAGUE SOFTBALL NEEDS IMPROVED ACCESS
 - ↳ BIRCH? → IMPROVED LIGHT.
 - ↳ JERRY FABER?
 - non-sch. sites
- BETTER LIGHTING @ BIRCH
- BIKE SKILLS PARK → DIRT
 - ↳ INTENDED TO BE PERM.
- \$ for SOCCER vs. OTHER PROJ.s?

- ENSURE \$ FOR PROJECTS EQUALLY WEIGHS ALL PARK NEEDS
 - STORMS/TREES/MAINTENANCE
 - BETTER TREE MAINT.
- HOW WERE PRIORITIES TRANSLATED INTO TIERS?
 - ↳ SITE AVAILABILITY TO MEET COMMUN. DEMAND
- NEED WATER FOUNTAINS @ SPORTSFIELD
 - ↳ LESS WATER BOTTLES (PLASTIC)
- MAINTENANCE COSTS
 - ↳ TOO MUCH FOR DOG PARKS?

- NEED MORE \$ FOR TRASH MAINT.
 - ↳ CHECK FIGURES
 - ↳ TRASH TRANSFER (ENG)
- CIVIC CENTER WILL HAVE A RESTROOM
 - ↳ EVEN IF R.F. IS MOVED
- ENSURE THAT DOG PARK WATER HAS WATER LINE/CIRCULATION
- NEED SITES/ACCESS FOR SOCCER
 - ↳ NEED DEDICATED USE (SAFETY)
- BIKE SKILLS PARK (NOT PUMPTRACK OR PLAYGROUND)
- WATER SUSTAIN.?
 - ↳ CITY WILL USE SUST. IN NEW

- LIGHT SHOULD BE SUSTAIN.
- R.F.s → BID → DD → CD → CA
 - ↳ CONTRACTOR
- MIX OF COVERED + UNCOVERED PICNIC AREAS
- \$ FOR TURF vs. ARTIFICIAL
- BALANCE USER GROUPS
- CONSIDER BASEBALL COMPLEX
- GRASS FIELDS @ SPORTSFIELD
 - ↳ CONSIDER FLEXIBLE USE ON TURF (PROPOSED) TO INCLUDE BASEBALL

- NEED DIRT INFILL FOR BASEBALL
 - ↳ BIRCH?
- HOW DID PLAN → SOCCER
 - ↳ COMMUN. INPUT
 - ↳ USER RATES
- \$48 MILLION → PRIORITIZING PROCESS
- PLAN INTENDED TO UPDATE EVERY 5-10 YEARS

THE NEWARK COMMUNITY:

- Values outdoor recreation
- Prioritizes the enhancement and creation of sport fields
- Has a growing interest in non-traditional sports, such as skating
- Seeks adaptive use of space and resources
- Desires community connection

THE NEEDS ASSESSMENTS ASSERTS:

- Previous planning efforts that identified desired recreational facilities
- Recommendations presented in the City's 2013 *General Plan*; development of a skate and/or bike park; multi-purpose all-weather turf fields; community dog park



**protect
and
support**

**demands
in
service**

**foster
connection**

**community
identity**

ALL-WEATHER TURF FIELDS



AMPHITHEATER



BIKE SKILLS PARK



COMMUNITY GARDEN



DECORATIVE GARDENS



DOG PARKS



GRASS TURF FIELDS



GROUP PICNIC AREAS



SKATE PARK



SPLASH PADS



- 1) BIRCH GROVE PARK DOG PARK
- 2) NEWARK COMMUNITY PARK DOG PARK
- 3) SPORTSFIELD PARK ALL-WEATHER TURF
FIELDS AND UPDATED PEDESTRIAN PATHWAY
- 4) SPORTSFIELD PARK SKATE PARK

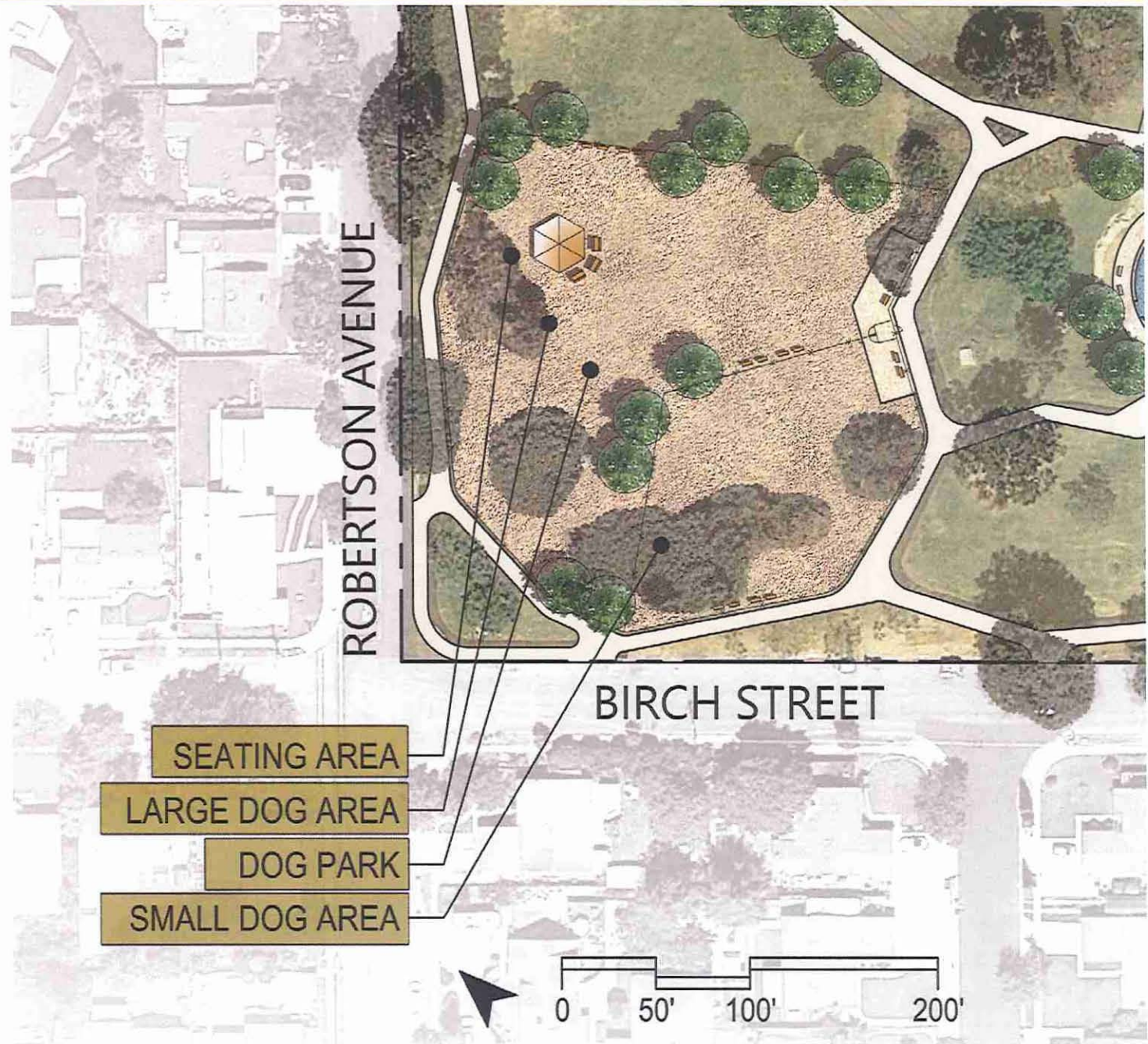
1) BIRCH GROVE PARK DOG PARK

- \$503,783
- 1.3 acres/56,449 sf

protect and support

demands in service

community identity



2) NEWARK COMMUNITY PARK DOG PARK

- \$315,648
- 1 acre/38,700 sf



protect
and
support

demands
in
service

community
identity

3) SPORTSFIELD PARK ALL-WEATHER TURF FIELDS AND UPDATED PEDESTRIAN PATHWAY

- All-Weather Turf Fields
\$4,400,214
6 acres/260,000 sf
- Pedestrian Pathway
\$390,478
35,500 sf

protect and support

demands in service

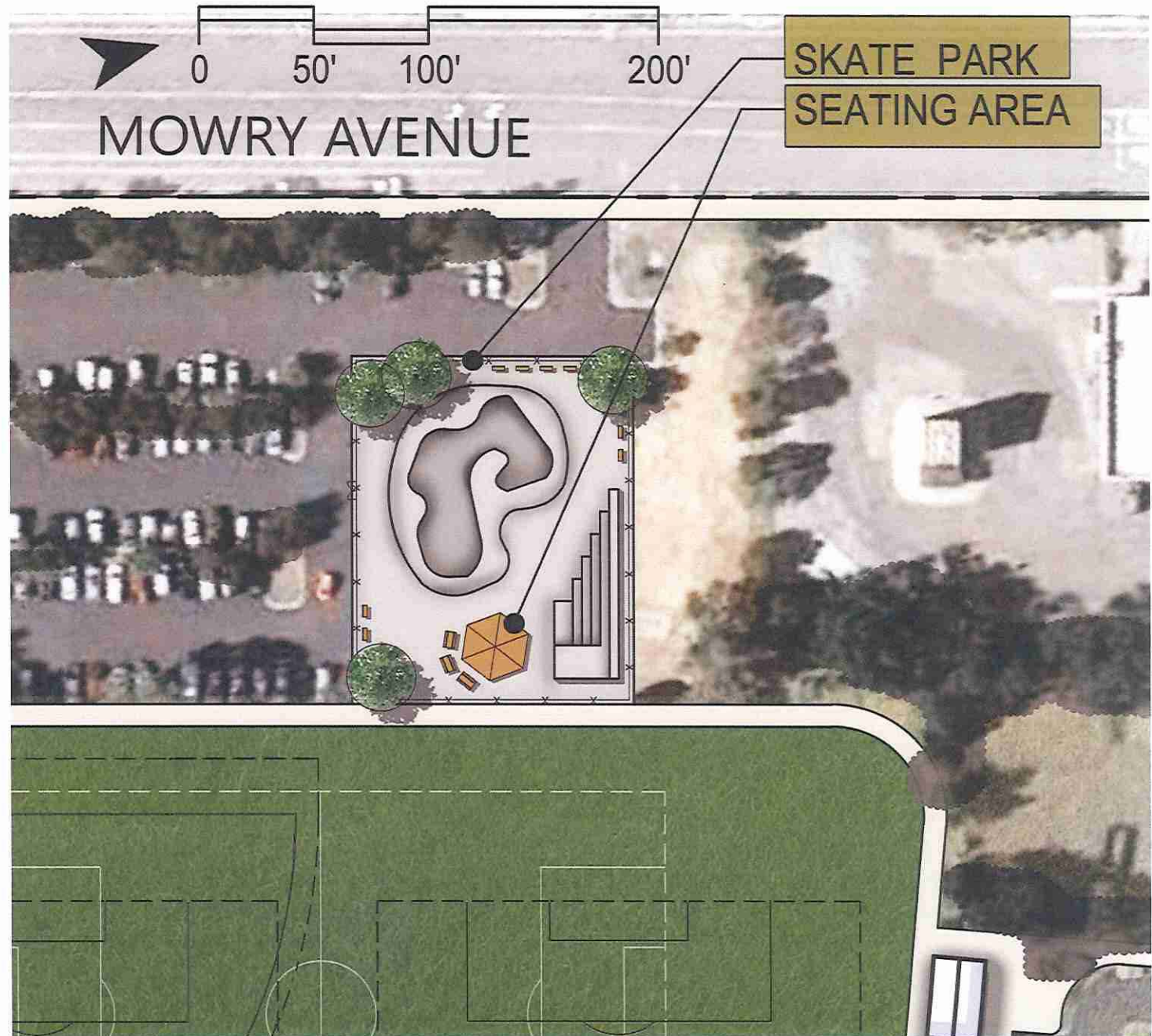
community identity

foster connection



4) SPORTSFIELD PARK SKATE PARK

- \$1,140,450
- 18,000 sf



protect
and
support

demands
in
service

community
identity

PLAN + IMPLEMENTATION

**SCHEMATIC PARK SITE
MASTER PLANS**

PLAN + IMPLEMENTATION

protect
and
support

demands
in
service

community
identity

BIRCH GROVE PARK



PLAN + IMPLEMENTATION

protect
and
support

demands
in
service

community
identity

NEWARK COMMUNITY PARK



PLAN + IMPLEMENTATION

protect
and
support

demands
in
service

community
identity

foster
connection

SPORTSFIELD PARK 1



PLAN + IMPLEMENTATION

protect and support

demands in service

community identity

foster connection



rhaa



DISCUSSION

1) QUESTIONS AND COMMENTS

2) NEXT STEPS

City of Newark

CITYWIDE PARKS MASTER PLAN

DRAFT May, 2017



BAYSHORE PARK



BYINGTON PARK

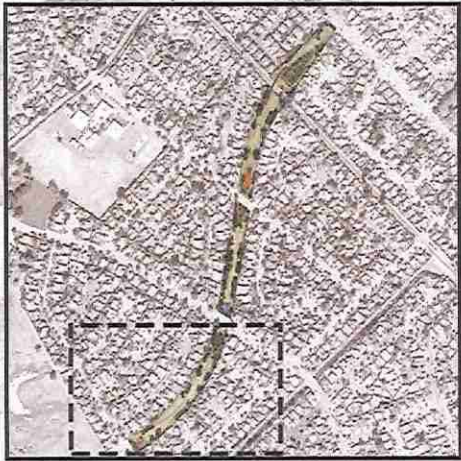


PLAN + IMPLEMENTATION

demands
in
service

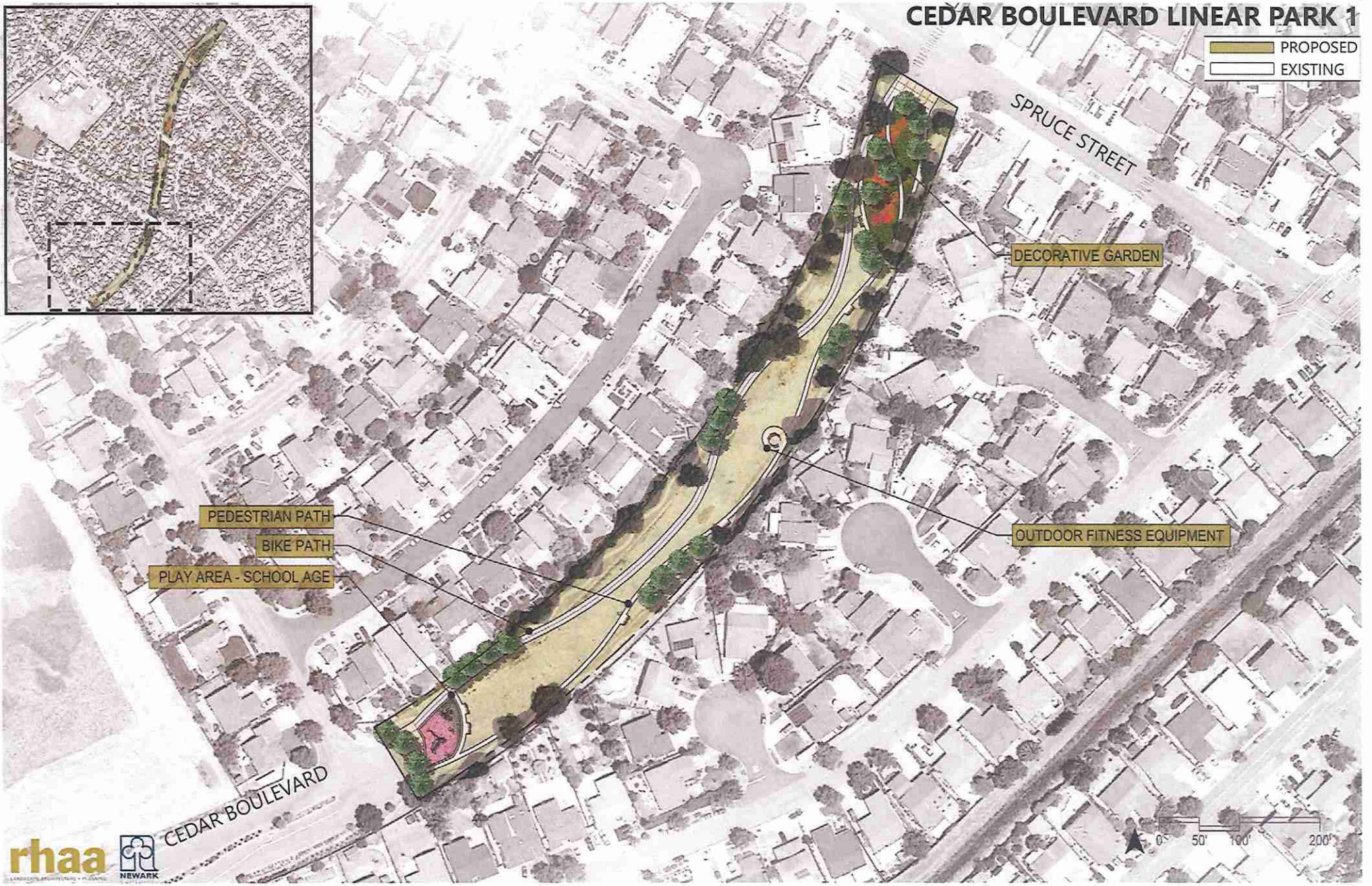
community
identity

foster
connection



CEDAR BOULEVARD LINEAR PARK 1

PROPOSED
EXISTING

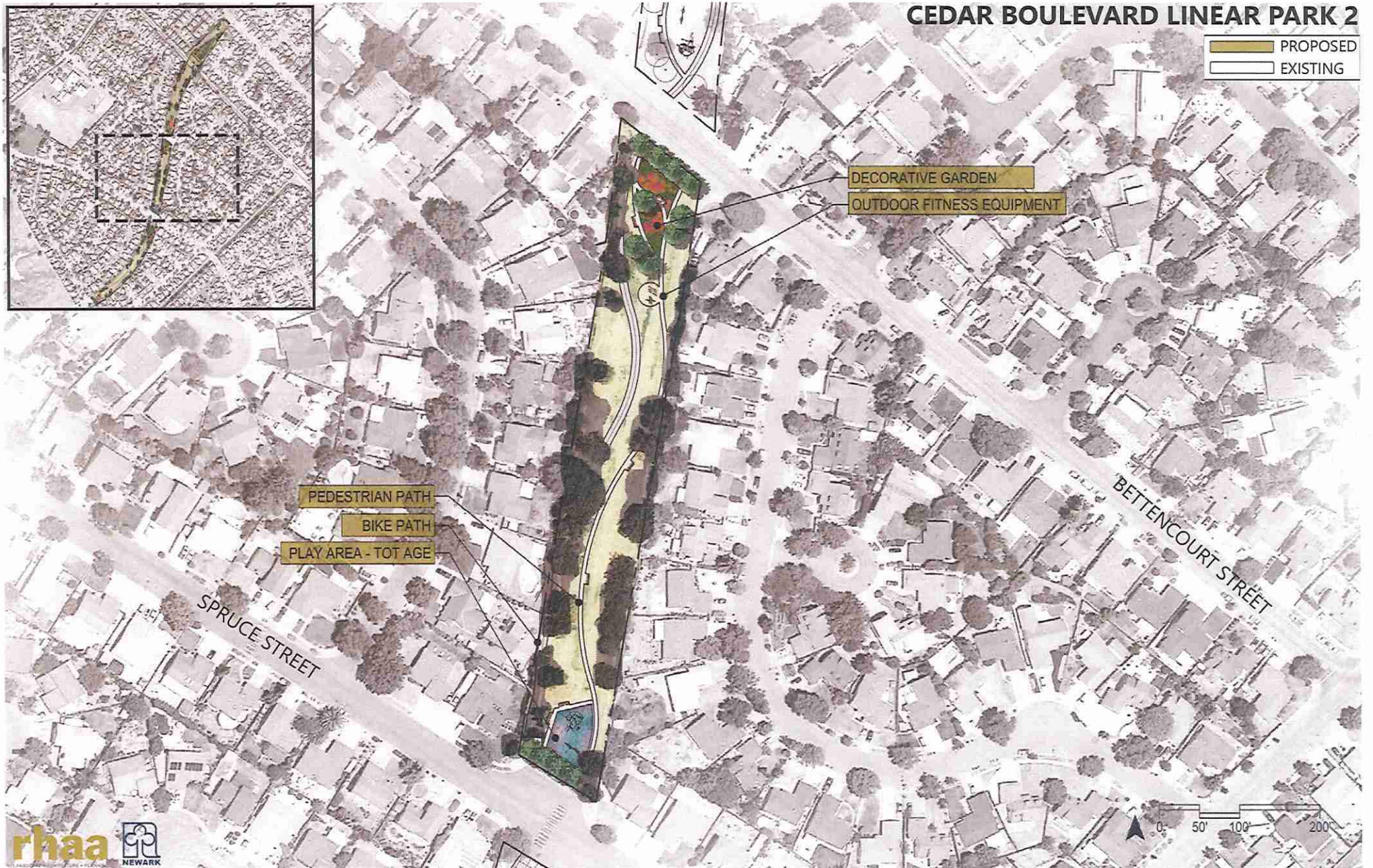


PLAN + IMPLEMENTATION

demands
in
service

community
identity

foster
connection

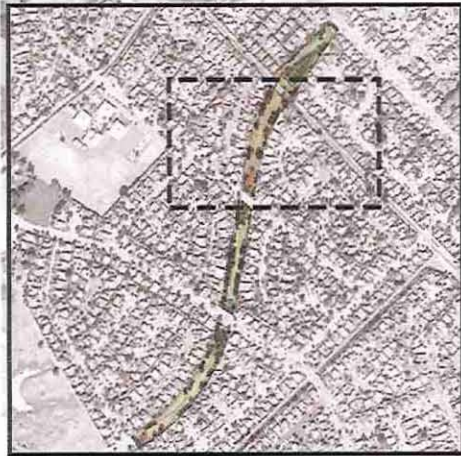


PLAN + IMPLEMENTATION

demands
in
service

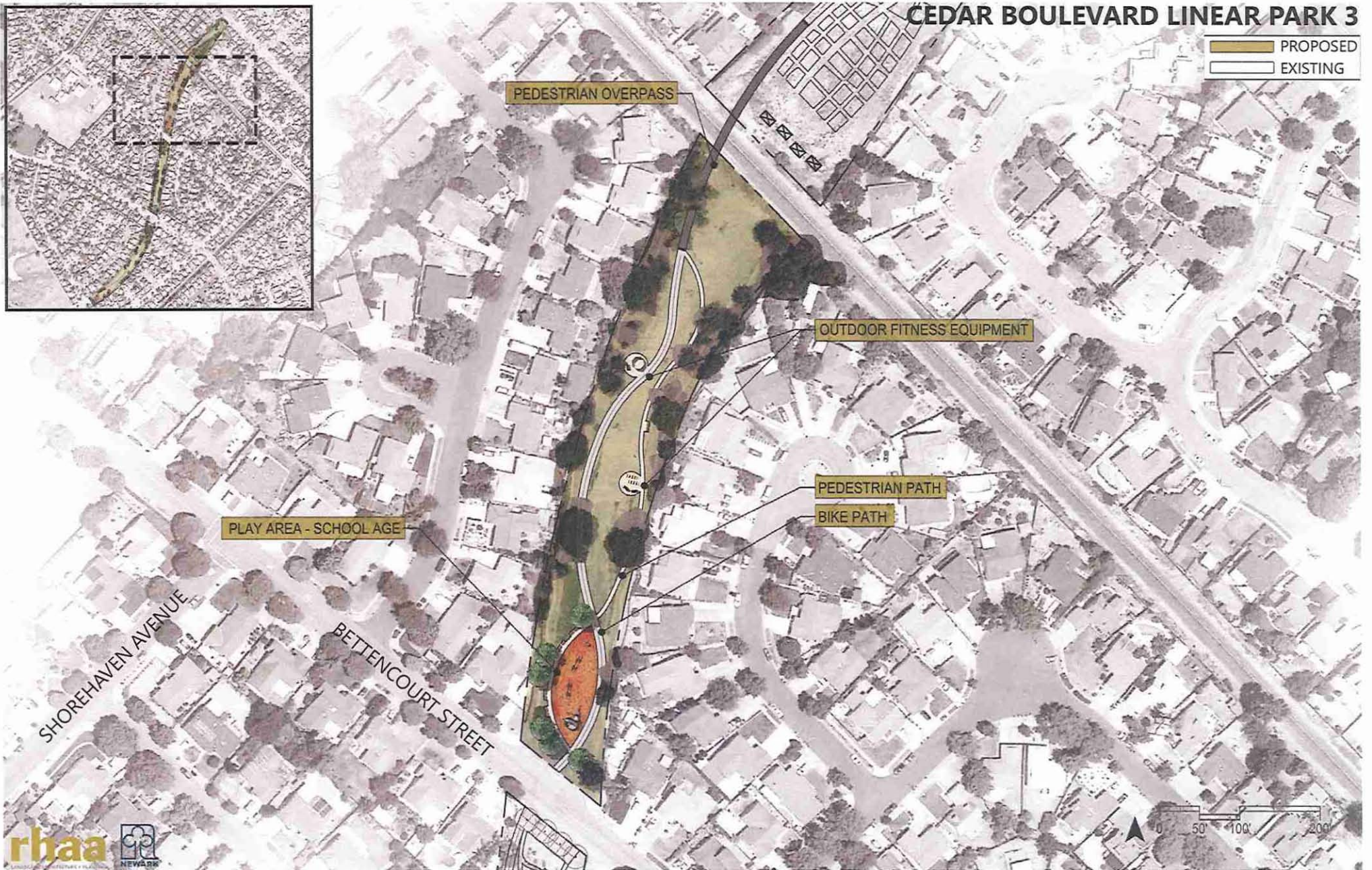
community
identity

foster
connection



CEDAR BOULEVARD LINEAR PARK 3

PROPOSED
EXISTING



PEDESTRIAN OVERPASS

OUTDOOR FITNESS EQUIPMENT

PEDESTRIAN PATH

BIKE PATH

PLAY AREA - SCHOOL AGE

SHOREHAVEN AVENUE

BETTENCOURT STREET

PLAN + IMPLEMENTATION

demands
in
service

community
identity

foster
connection



CEDAR BOULEVARD LINEAR PARK 4

PROPOSED
EXISTING



PLAN + IMPLEMENTATION

protect
and
support

demands
in
service

community
identity

CIVIC CENTER PARK



DUMBARTON NEIGHBORHOOD PARK



PLAN + IMPLEMENTATION

protect
and
support

demands
in
service

community
identity

JERRY RABER ASH STREET PARK



PLAN + IMPLEMENTATION

protect
and
support

demands
in
service



LAKESHORE PARK 1

PROPOSED
EXISTING



PLAN + IMPLEMENTATION

protect
and
support

demands
in
service





PLAN + IMPLEMENTATION

protect
and
support

demands
in
service

LAKESHORE PARK 4

PROPOSED
EXISTING

OUTDOOR FITNESS EQUIPMENT
SEATING AREA
PLAY AREA - SCHOOL AGE

UPDATED BOATHOUSE + RESTROOM
EXISTING PATHWAYS

MAYHEWS LANDING PARK



MIRABEAU PARK



PLAN + IMPLEMENTATION

protect
and
support

MUSICK PARK



PLAN + IMPLEMENTATION

- protect and support
- demands in service
- community identity
- foster connection

SHIRLEY SISK GROVE

