

# Newark, California Rail-Highway Grade Crossing Quiet Zone Feasibility Study

Prepared by:

**R.L Banks & Associates, Inc.**

**Arlington, Virginia**

**Michael Allen**

**Thomas Messer**

[mallen@rlbadc.com](mailto:mallen@rlbadc.com)

[tmesser@rlbadc.com](mailto:tmesser@rlbadc.com)

# Newark, California Grade Crossing Inventory

FRA Crossing #	Cal PUC Crossing #	RR	Type	Position	Status	Mile post	City	RR SubDivision	Street	Quiet Zone		
										Proposed	Eligible	
749937D	001L-29.10	UP	Public	At Grade	Open	29.10	Newark	Coast Sub	Jarvis Avenue	P	Y	Coast Subdivision Quiet Zone
749938K	001L-29.30	UP	Public	At Grade	Open	29.31	Newark	Coast Sub	Haley Street	P	Y	
922029U		UP	Private	At Grade	Open	29.58	Newark	Coast Sub	Private	NA		
749939S	001L-30.00	UP	Public	At Grade	Open	30.05	Newark	Coast Sub	Mayhews Landing Rd	P	Y	
749940L	001L-30.40	UP	Public	At Grade	Open	30.42	Newark	Coast Sub	Thornton Avenue	P	Y	
749941T	001L-30.60	UP	Public	At Grade	Open	30.62	Newark	Coast Sub	Carter Avenue	P	Y	
749943G	001L-31.10	UP	Public	At Grade	Open	31.12	Newark	Coast Sub	Central Avenue	P	Y	
450368T		UP	Private	At Grade	Open	31.29	Newark	Coast Sub	Private Crossings in	N	N	Excluded
749944N		UP	Private	At Grade	Open	31.70	Newark	Coast Sub	Yard Limits	N	N	
749946C	001L-32.20	UP	Public	At Grade	Open	32.25	Newark	Coast Sub	Mowry Avenue	P	Y	Mowry Quiet Zone
749950S	001DAB-36.40	UP	Private	At Grade	Open	33.40	Fremont	Coast Sub	Stevenson Blvd	NA		
750033G	001DAB-38.60	UP	Public	At Grade	Open	33.70	Newark	Niles Sub	Cedar Road	P	Y	Niles Subdivision Quiet Zone
750032A	001DAB-37.80	UP	Public	At Grade	Open	34.46	Newark	Niles Sub	Cherry Street	P	Y	
750030L	001DAB-37.50	UP	Public	At Grade	Open	34.77	Newark	Niles Sub	Sycamore Street	P	Y	
750021M		UP	Public	At Grade	Open	36.42	Newark	Newark Ind Ld	Willow Road	N	N	Newark Industrial Lead Excluded
750024H	001DAB-36.70	UP	Public	At Grade	Open	36.78	Newark	Newark Ind Ld	Spruce Street	N	N	
750028K	001DAB-37.10	UP	Public	At Grade	Open	37.06	Newark	Newark Ind Ld	Ash Street	N	N	

# Map of Newark Grade Crossings

Showing Potential  
Quiet Zones

Key:

Recommended

Coast Subdivision

Mowry Avenue

Niles Subdivision

Not Recommended

Newark Industrial Lead

## Newark, CA - Rail Crossings - Quiet Zone Study

### Rail Crossings

- ✖ Jarvis Ave. - Central Ave.
- ✖ Newark Industrial Lead
- ✖ Niles Subdivision
- ✖ Mowry Ave.

### Jarvis Ave - Central Ave

- Jarvis Ave. - Central Ave.

### Mowry Ave

- Mowry Ave.

### Niles Subdivision

- Niles Subdivision

### Newark Industrial Lead

- Newark Industrial Lead

### City of Newark Boundary



### Jarvis Ave. - Central Ave.

- 1 Jarvis Avenue - 749937D
- 2 Haley Street - 749938K
- 3 Mayhews Landing Road - 749939S
- 4 Thornton Avenue - 749940L
- 5 Carter Avenue - 749941T
- 6 Central Avenue - 749943G

### Mowry Ave.

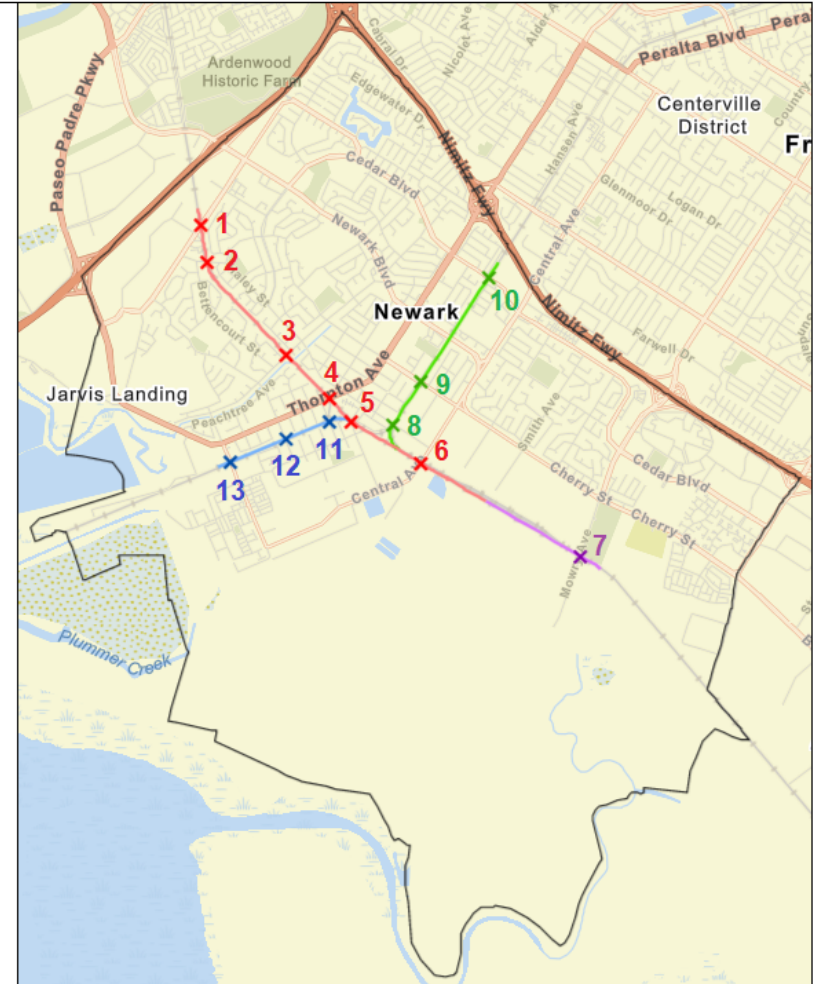
- 7 Mowry Avenue - 749946C

### Niles Subdivision

- 8 Sycamore Street - 750030L
- 9 Cherry Street - 750032A
- 10 Cedar Boulevard - 750033G

### Newark Industrial Lead

- 11 Ash Street - 750028K
- 12 Spruce Street - 750024H
- 13 Willow Street - 750021M



This map represents the RLBA response to the Newark City, California, Request for Proposal for the work titled: Railroad Quiet Zone Feasibility Study - Project 1276.

City of Fremont, California State Parks, Esri, HERE, Garmin, SafeGraph, GeoTechnologies, Inc, METI/NASA, USGS, Bureau of Land Management, EPA, NPS, USDA

Author: Winston Chu | Date Created: May 26, 2022 | Projection: Web Mercator

Sources: U.S. Department of Transportation, Federal Railroad Administration, California State Government/Open Data Portal

# Possible and Recommended Quiet Zones

- Four possible Quiet Zones studied
- Three Recommended
  - Coast Subdivision between Jarvis Avenue and Central Avenue
  - Mowry Avenue
  - Niles Subdivision between Sycamore Street and Cedar Boulevard
- One Not Recommended
  - Newark Industrial Lead between Ash Street and Willow Road (Willow 'Street' in FRA database)
- Excluded Crossings
  - Four private crossings deemed not relevant to study

# Recommended Improvements Coast Subdivision Quiet Zone

- Jarvis Avenue 749937D – No improvement needed
- Haley Street 749938K – Four-quadrant gates and collapsible bollards
- Mayhews Landing Road 749939S – Four-quadrant gates and collapsible bollards
- Thornton Avenue 749940L – Four-quadrant gates, cantilever signals, collapsible bollards and an additional crossing signal with a “Do Not Block Fire Station” sign west of the fire station
- Carter Avenue 749941T – Double-gate on each side and extend the median on the northbound side
- Central Avenue 749943G – Crossing to be grade separated
- Quiet Zone Risk Index **1,691.05** versus Current Risk index **51,907.00**

# Recommended Improvements Mowry Avenue Quiet Zone

- Mowry Avenue 749946C plans submitted by the developer meet the criteria for a Quiet Zone
- Quiet Zone Risk Index **5,412.73** versus Current Risk Index **36,301.06**

# Recommended Improvements Niles Subdivision Quiet Zone

- Cedar Boulevard 750033G - Four-quadrant gates and collapsible bollards
- Cherry Street 750032A – No crossing improvements needed. Intersection with Baine Avenue on the west side needs to be reconfigured to meet the 60-foot separation requirement and may need a waiver
- Sycamore Street 750030L – Four-quadrant gates along with additional center striping and collapsible bollards
- Quiet Zone Risk Index **6,366.50** versus Current Risk Index **47,710.57**

# **Newark Industrial Lead Quiet Zone – Not Recommended**

- Recommend removing all crossing signals on the industrial lead and replacing them with crossbucks
- Non-working signals are a safety hazard



# Private Crossings Excluded From Study

- Excluded Crossings
  - 22029U MP 29.58 Coast Subdivision gated private access road to access the drainage canal
  - 450368T MP 31.29 and 749944N MP 31.7 Coast Subdivision private crossings within Yard Limits
  - 749950S MP 33.40 Coast Subdivision Stevenson Boulevard private crossing at the Fremont city line

# Railroad Crossing Elimination Program

- Competitive grants
  - Authorizes \$2.5 billion; appropriates \$3 billion
  - FY22: \$575 million
- Eligible projects:
  - Grade separation or closure
  - Track relocation
  - Improvement or installation of safety equipment
  - Other crossing safety projects
  - Groups of related projects
  - Planning and design
- Railroad approval is required before proceeding to construction
- Federal share may not exceed 80%

# Program Highlights

- No more than 20 percent of funding in any one state
- At least 20 percent of funds for rural or Tribal areas
- 0.25 percent of funding for safety information and education programs
- **At least 3 percent of funding for planning grants**

# Evaluation of Applications

- **Primary evaluation:**
  - ✓ Improve Safety
  - ✓ Grade separate, eliminate, or close crossings
  - ✓ Improve mobility
  - ✓ Reduce emissions, protect the environment, and provide community benefits
  - ✓ Improve access for emergency services
  - ✓ Provide economic benefits
  - ✓ Improve access to communities separated by rail crossings
- **Considerations:**
  - ✓ Innovation
  - ✓ Use of local labor
  - ✓ Improve mobility for multiple modes of transportation
  - ✓ State planning
  - ✓ Financial Support from Rail Carriers

# Administration and Secretarial Objectives

- Addressing Climate Change, Sustainability, and Resiliency
- Improving Equity and Community Connections
- Improving Safety and Efficiency
- Creating Good Jobs and Economic Opportunities